

Kofax Communication Server

Advanced Email Capture Administration Guide

Version: 10.3.0

Date: 2019-12-13

The KOFAX logo is displayed in a bold, blue, sans-serif font. The letters are thick and closely spaced, with a consistent blue color throughout.

© 2019 Kofax. All rights reserved.

Kofax is a trademark of Kofax, Inc., registered in the U.S. and/or other countries. All other trademarks are the property of their respective owners. No part of this publication may be reproduced, stored, or transmitted in any form without the prior written permission of Kofax.

Table of Contents

Chapter 1: Preface	4
Chapter 2: Overview	5
Components.....	5
Chapter 3: Prerequisites	6
Chapter 4: Installation	7
TCfW Communication Server Client.....	8
TC/LINK-SM and TC/LINK-CCD.....	8
TC/LINK-SM Setup.....	8
TC/LINK-CCD Setup.....	9
TCOSS.....	10
Licenses.....	11
Chapter 5: Configuration	12
TCOSS.....	12
Licenses.....	14
KCS Monitor.....	15
TCfW Communication Server Client.....	15
KCS User for Kofax Capture.....	15
Configure TIFF Printing for the Forward User.....	18
TC/LINK-SM.....	19
TC/LINK-CCD.....	20
Additional Information.....	22
Binary Files.....	22
Positional Information.....	26
Using Coversheets and Template Text.....	26
Configuration Examples.....	27
Chapter 6: Licensing and Pricing	31

Chapter 1

Preface

Kofax Communication Server– Advanced Email Capture is used to convert incoming email messages into a single format (TIFF), from which Kofax Capture can capture relevant information as part of an automatic business process.

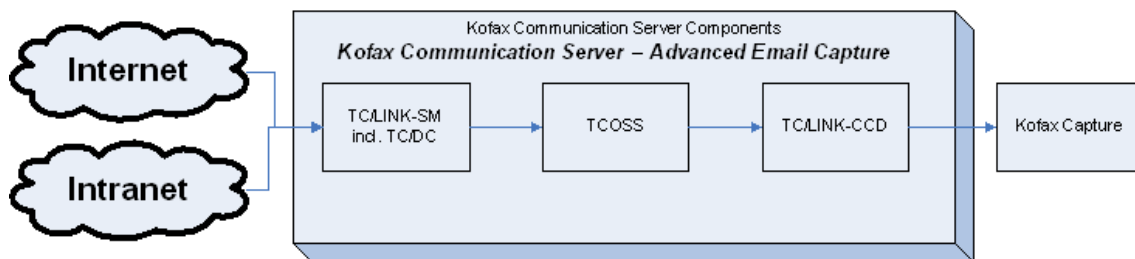
The target audience is Kofax Communication Server technicians. This document will act as a guide, so that the technician does not need to read three different manuals to install the solution. It contains only the information needed to successfully install the products. The guide does not contain the full description of the components. If you need additional information, please consult the appropriate manual.

Important Kofax Communication Server and its components formerly used the name TOPCALL. Kofax Capture was formerly known as Ascent Capture. Some screen shots and texts in this manual may still use the previous names.

Chapter 2

Overview

Here you can see a small diagram displaying the main Kofax products in this solution and the message flow.



TC/LINK-SM receives an email and converts the attachments via TC/DC into TIFF. Then the message continues into TCOSS, where it is routed to TC/LINK-CCD to create an XML batch file for Kofax Capture. The XML file contains linked multi-page TIFF images for each attachment.

Components

- TC/LINK-SM: This link receives the email either from the Internet or from an internal mail server.
- TCOSS: Used as a temporary storage and forwarding hub.
- TC/LINK-CCD: This link sends the message to Kofax Capture.
- TC/DC: The document converter is called by the TC/LINK-SM and converts the attachments to TIFF images.
- TC/Monitor: This small application can be used to monitor the other components.
- TCfW Communication Server Client: This application is needed for configuring the routing from email to Kofax Capture.

Chapter 3

Prerequisites

Supported operating systems:

Any currently supported Operating System. For more details about supported operating systems, refer to the *Platform System Manual*.

Additional prerequisites from TCOSS:

- For the TCOSS file structure, you need a second partition (D:). There are ways to circumvent it, but this is more advanced. Please consult the TCOSS manual.

Additional prerequisites from TC/LINK-CCD:

- Ascent Capture 7.0, 7.5, or Kofax Capture 8.0. (TC/ReleaseScript 1.03.00 or higher, TC/LP 2.20.00 or higher) or
- Kofax Capture 9.0 SP1 (since TC/LP 2.36.00 or higher)
- For support of color TIFF attachments you need either Kofax Capture 8.0 or Ascent Capture 7.5 plus update with VRS 4.1 SP2. This is necessary for Kofax Capture to read TIFF JPEG Technical Note 2 color images.
- TC/LP 2.26.00 or higher (for color TIFF support)
- MSXML (3.0 or higher) must be installed, if you install the TC/ReleaseScript on Windows 2000. You can download the latest version (MSXML 4.0 SP2) from:

<http://www.microsoft.com/downloads/details.aspx?FamilyID=3144b72b-b4f2-46da-b4b6-c5d7485f2b42&DisplayLang=en>

Additional prerequisites from TC/LINK-SM:

- For the identification of TC/LINK-SM, select a full hostname (such as <pcds.kofax.com>) first. The hostname must be unique in the area TC/LINK-SM is reachable (for the Internet, you obtain this mail domain name from your ISP (Internet Service Provider); for Intranets, contact the network administrator).
- Make sure that the firewall (if installed) allows SMTP connections to and from the designated TC/LINK-SM server IP address. You can check this with Telnet to "smtp"; if this does not work, contact the local firewall administrator.

Additional prerequisites for Document Conversion:

- For each document type, an application is necessary that can open and print this document type. Standard document types that are supported are the Microsoft Office Word, Excel and PowerPoint, along with HTML. In order to convert them, Microsoft Office has to be installed. HTML is supported via Internet Explorer. For converting PDF you need an additional license. Please see the *Document Conversion Manual* for details.

Chapter 4

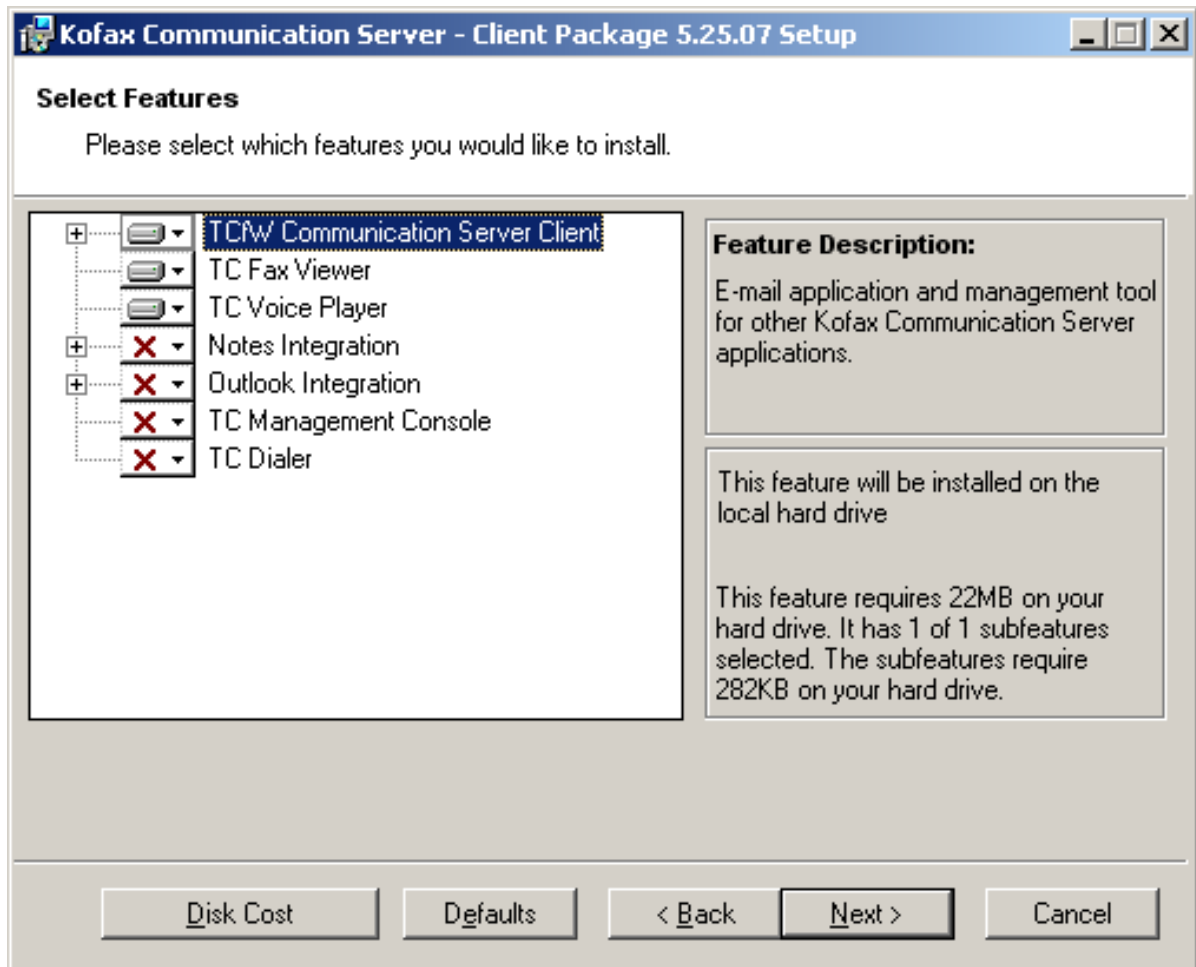
Installation

The following steps guide you through the installation of TCfW, TC/LINK-SM, TC/LINK-CCD and TCOSS. All necessary steps are included. In some circumstances, custom procedures may be necessary. For these situations, please consult the appropriate manual.

In this guide, PCDS is used as the hostname, which will also be the name of the KCS server.

TCfW Communication Server Client

1. Start the setup of KCS Client Applications and keep the default selection (TCfW, Fax Viewer and Voice Player).



2. Click **Next** and finish the installation.

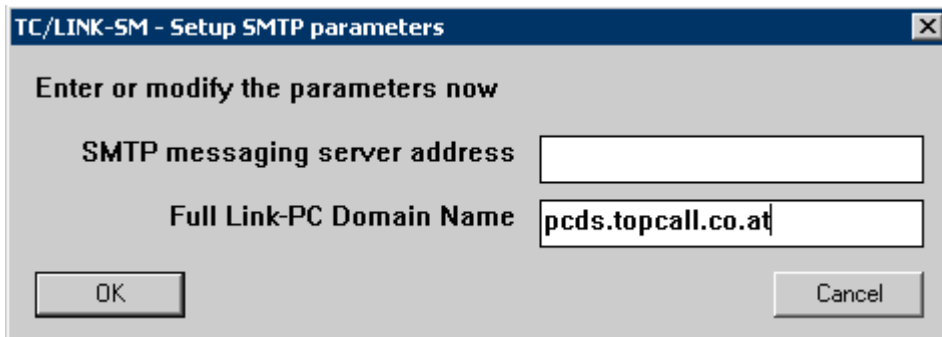
TC/LINK-SM and TC/LINK-CCD

Start the KCS setup and from Links group select TC/LINK-SM and TC/LINK-CCD—that way both Link Setup screens are shown, one after the other.

TC/LINK-SM Setup

1. Enter PCDS as the KCS Server name.
2. You can keep all the default settings of the general link settings. Click **OK**.

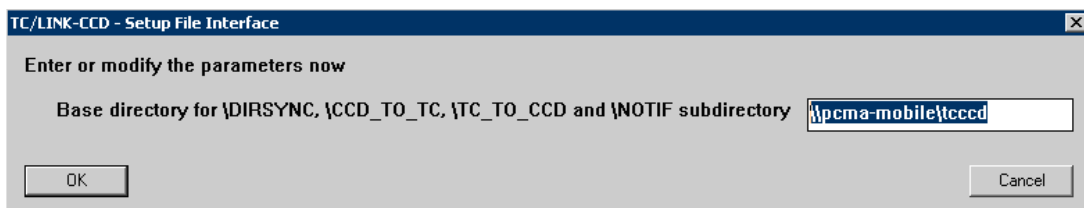
3. The only TC/LINK-SM specific screen (in easy installation mode) is the following.



4. Here, the full domain name of the PC must be entered. This is the domain name to use when forwarding mails from the customer mail server to Advanced Email Capture.

TC/LINK-CCD Setup

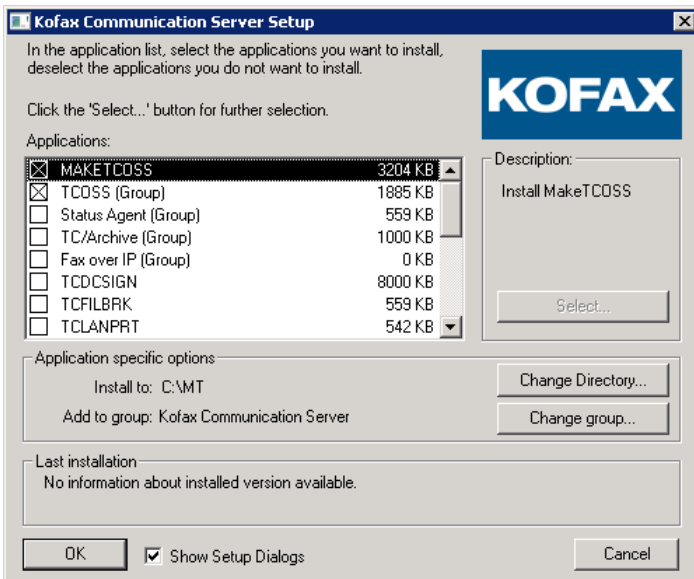
1. Enter PCDS as the KCS Server name.
2. You can keep all the default settings of the general link settings. So you can always click **OK**.
3. In the special TC/LINK-CCD setup screens, you can keep the default settings except for the following.



If Kofax Capture is installed on another computer, you must specify the shared directories as **UNC paths**; however they have to be **located on the TC/LINK computer**. Example: `\\tclink.kofax.com\c$\tcccd`.

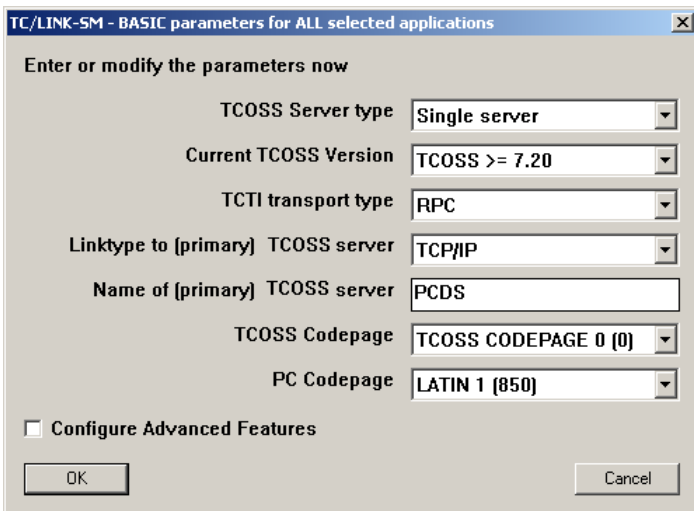
TCOSS

1. Start the setup of Kofax Communication Server and select TCOSS, MAKETCOSS, KCS License Tool – TC/LT, and KCS Monitor.

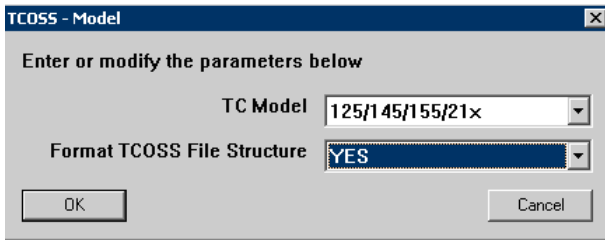


In the next screens, the default entries may be left, except for the following:

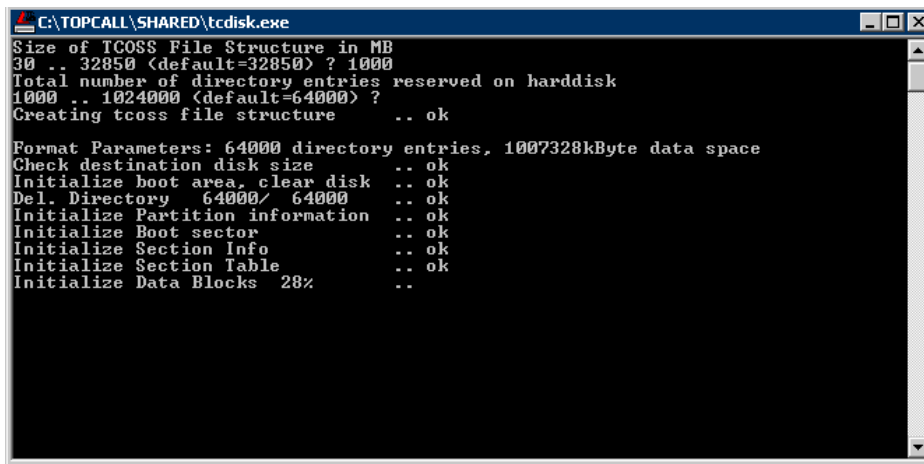
2. The name of the KCS server has to be set to “PCDS” in this example.



- The “Format File Structure” setting. For a first installation, you should select **Yes**.



- Before the TCOSS file structure is formatted, you are asked how big the file structure should be. A recommended value is 1000 MB.



- When finished, reboot the system.

Licenses

You have to install the TC/LINK-SM and TC/LINK-CCD licenses with the Kofax Communication Server License Maintenance tool.

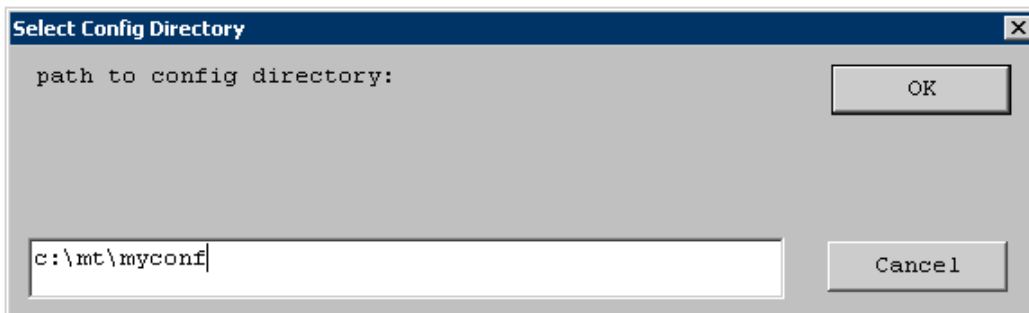
Chapter 5

Configuration

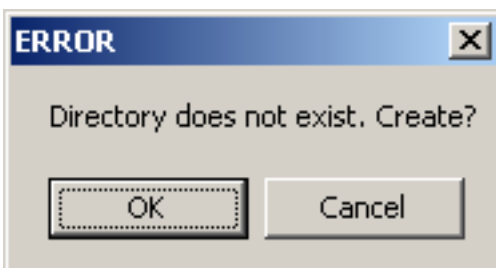
The following steps guide you through the configuration of TCOSS, TC/LINK-SM, TC/LINK-CCD and TCfW. All necessary steps are included. However, it may happen that some circumstances at a customer require doing something different. For these situations, please consult the appropriate manual.

TCOSS

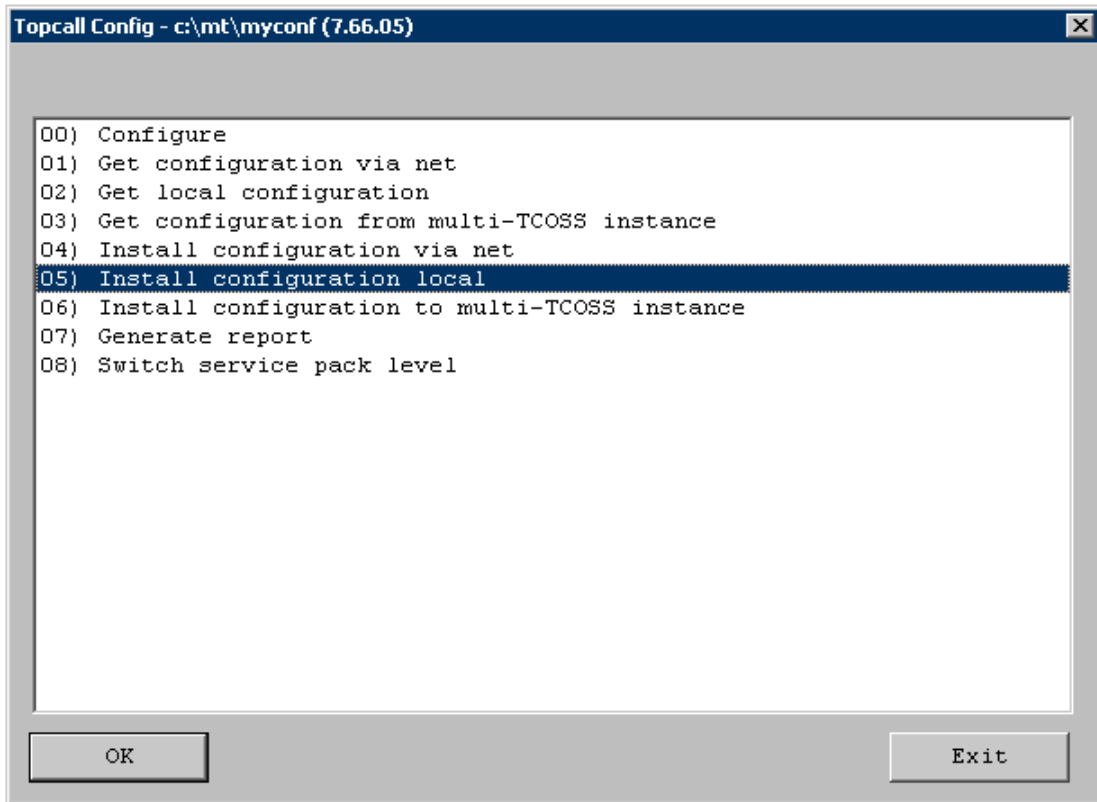
1. Create a new directory under "C:\MT", such as "myconf".
2. Start WCONFIG and enter the created directory path "C:\MT\myconf".



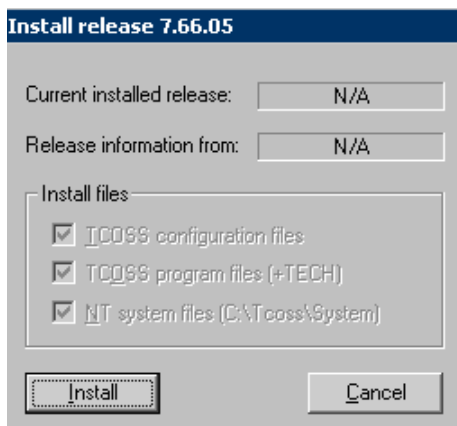
3. After clicking **OK** you will be asked to create an installation, so click **OK** again.



4. In WCONFIG, you do not need to configure anything. Simply select **Install Configuration Local**.



5. On the next screen, click **Install**.

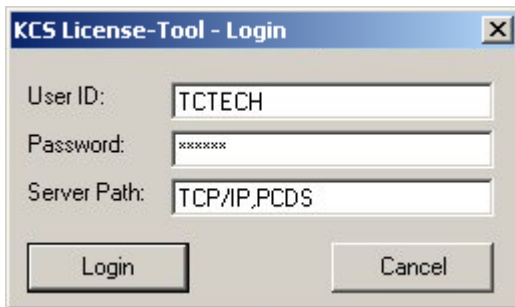


6. After the successful installation, you can exit WCONFIG.

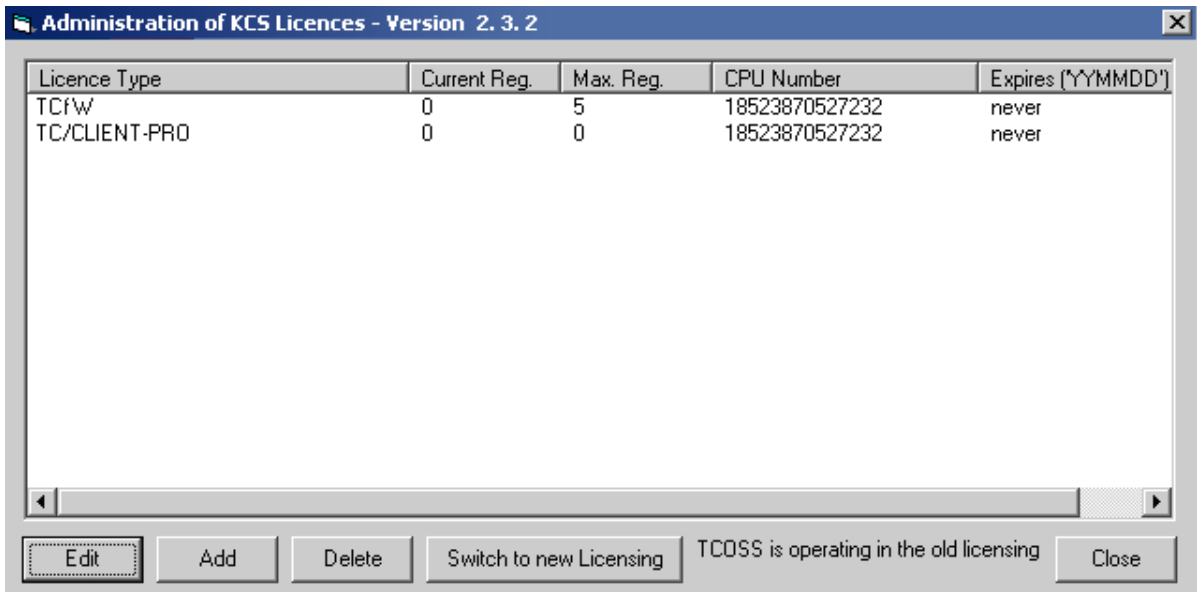
Licenses

To install licenses, you have to start TCOSS. Without licenses, it is possible to run the system in test mode for 7 days.

1. Start TCOSS/TCSRVR.
2. Start the KCS License Maintenance tool, login using the default user "TCTECH" with the password "tctech".



3. After login you come to the main screen of the license tool.



4. Switch to the new licensing. You can now either install the KCS licenses (TCOSS, TC/LINK-SM and TC/LINK-CCD) you ordered, or switch to test mode. Do one of the following:
 - Click **Add** to install the license file you received from KCS.
 - Click **Switch to Test mode** to activate test mode.

KCS Monitor

- Now you can test the installation by starting KCS Monitor. Select your local PC and start it.

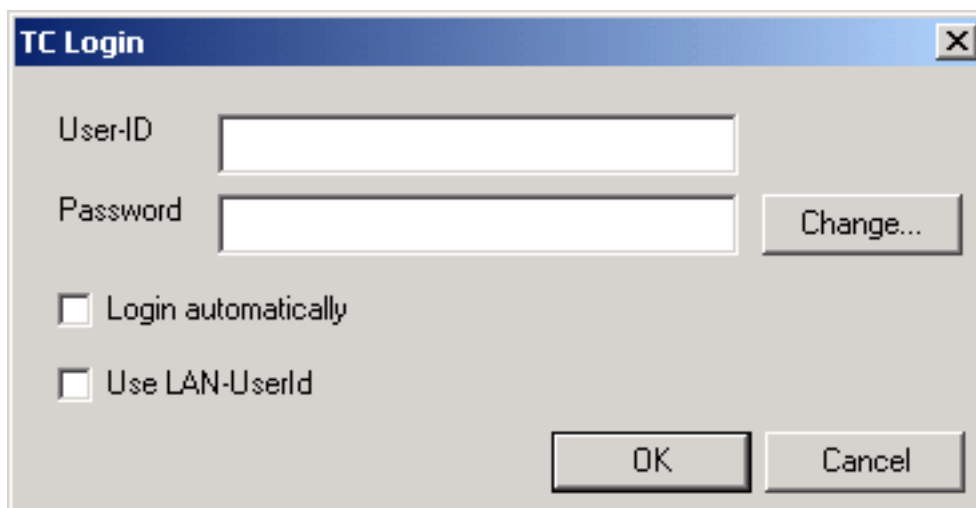


- Within the Windows Services, you should change the setting of TCSRVR (the service controlling all KCS applications) to start automatically.

TCfW Communication Server Client

With TCfW you have to create a user that receives and forwards messages to TC/LINK-CCD and you have to configure creation of TIFF images for this user.

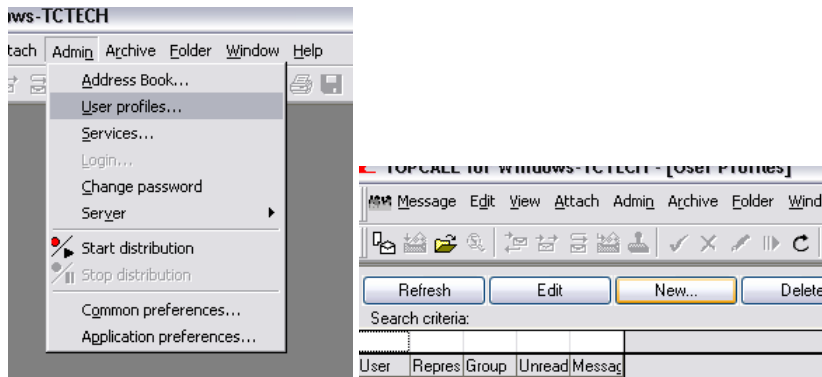
- First, start TCfW and log in as the TCTECH user.



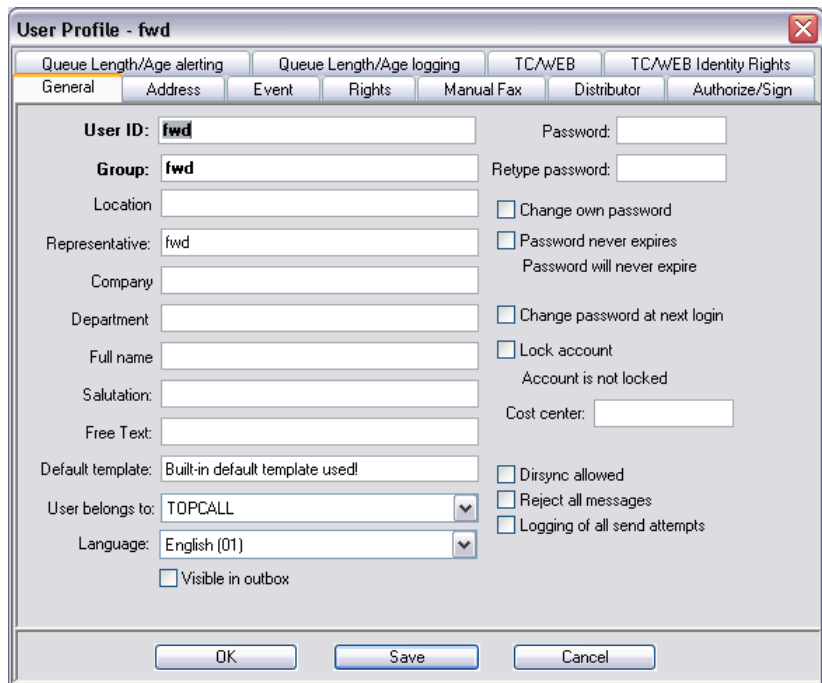
KCS User for Kofax Capture

1. You need to create a user on KCS who shall receive all messages and forward them to TC/LINK-CCD.

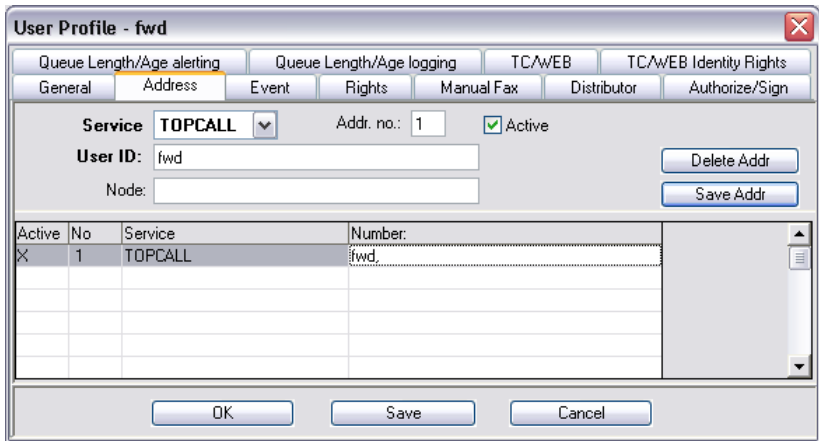
2. Create a user (we use "fwd" as the username in our example). So go to the **User profiles** and press **New**.



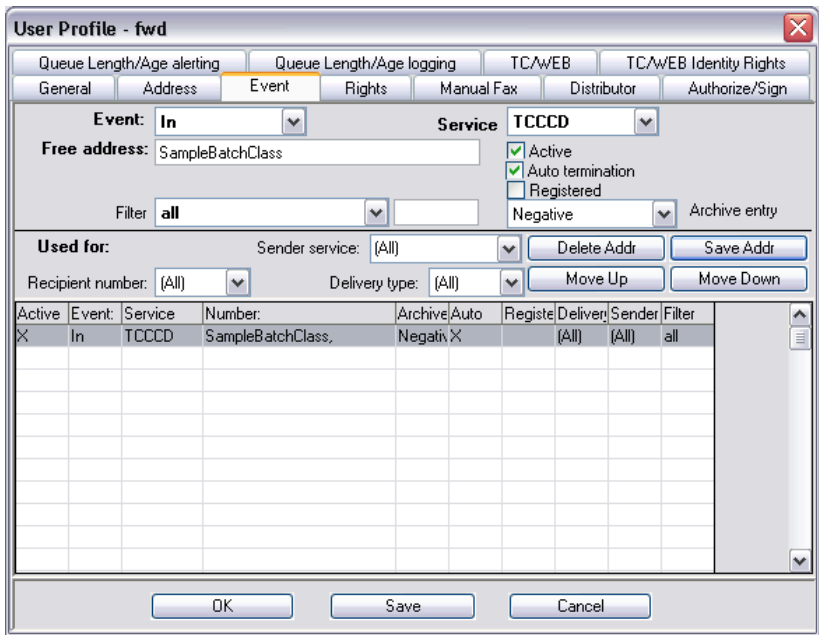
3. On the first user screen, you just need to fill in the name of the user and press TAB.



4. Additionally, the user needs the TOPCALL address (“fwd”).



5. Last but not least, the user needs an In-Event sending all messages to TC/LINK-CCD.

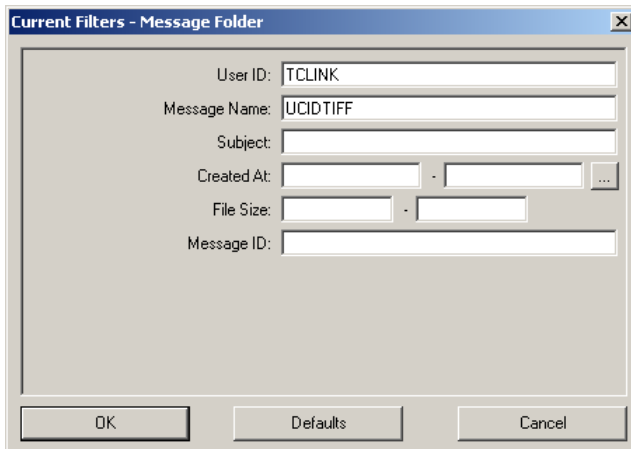


6. In our example, the messages will be sent via the default service “TCCCD” and the name of the batch class in Kofax Capture is “SampleBatchClass”. This must be coordinated with the Kofax Capture installation and configuration. Please consult the Kofax Capture admin for the name of the batch class.
7. If you plan to route the extracted data back to the sender (release script option), you must restrict the in-event to sender service SMTP: Messages from the TC/LINK-CCD service (TCCCD) must not be forwarded to Kofax Capture, or you create a message loop!
8. After that, you can save and close the user.

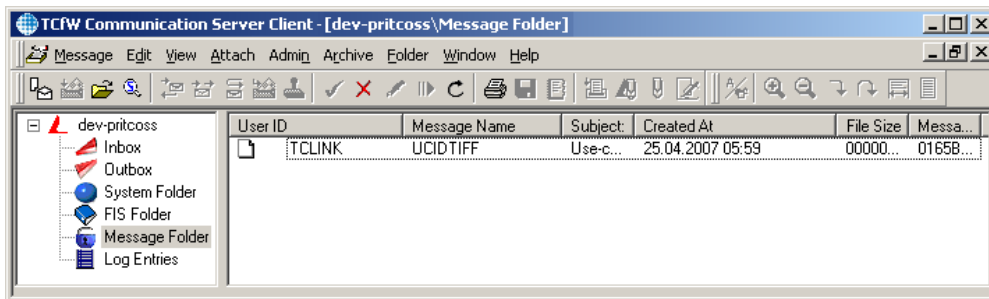
Configure TIFF Printing for the Forward User

Use this procedure to configure TIFF printing for the Forward user.

1. In the left pane, select **Message Folder** and then click the header **User ID** in the right pane.
 - a. Select **Set Filters**.
 - b. Set the filter to User ID **TCLINK**.
 - c. Set the Message Name to **UCIDTIFF**.

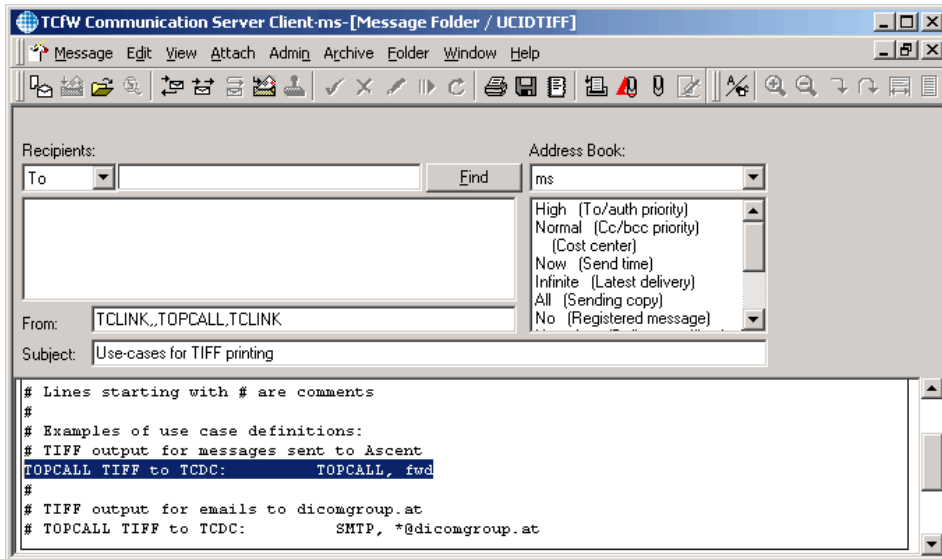


2. Click **Ok**. Now you can open the (message) file **UCIDTIFF**.



Note This file is created on TCOSS at first start-up of TC/LINK. You can also create it manually and use another filename. We need however such a configuration file later to configure TC/LINK-SM for the creation of TIFF alternatives for attachments.

3. Configure the “fwd” user to use the “TOPCALL TIFF to TCDC” printer:



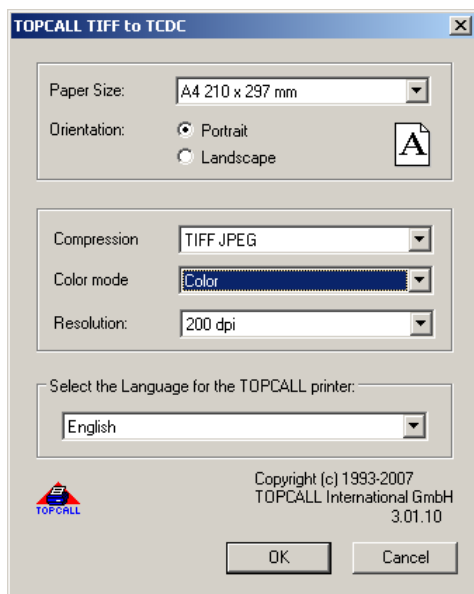
4. Save and close the file. The path to the configuration file (“TCLINK/UCIDTIFF”) is needed for TC/LINK-SM configuration.
5. Close TCfW.

TC/LINK-SM

Next, configure TC/LINK-SM to convert binary attachments to TIFF for the “fwd” user. This has to be done by setting the registry value “TCLINKSM\General\PrintUsecaseFile” to the previously configured TIFF use case file.

HKLM\Software\TOPCALL\TCLINKSM\General\PrintUsecaseFile = "TCLINK/UCIDTIFF"

1. Configure the TIFF settings of the TOPCALL TIFF to TCDC printer to define the compression and quality of the TIFF image (Start Menu\Settings\Printers and Faxes\TOPCALL TIFF to TCDC\Right-click\Properties\Options\Properties).



Kofax Capture supports the compression TIFF G4 (for black and white) and TIFF JPEG. For TIFF JPEG color, you need to update Kofax Capture with VRS 4.1 SP2; for TIFF JPEG grayscale you need an additional module update.

2. Set the registry value `TOPCALL\TCLINKSM\TCMIME\HTMLAsAlternative` to 1. This allows TCCCD to determine which alternative representation of the message body (text, HTML, TIFF) to use.
3. If cover sheets are used, configure TC/LINK-SM to start the HTML message body on the cover page by adding the following lines to the registry value `General\AltImgOnFirstPage`:
 - HTML,100,100,4
 - HTM,100,100,4
4. Restart TC/LINK-SM to apply the changes.

TC/LINK-CCD

First, you must check again with the Kofax Capture administrator if the output directory, which was defined in the TC/LINK-CCD installation, is correct. In other words, the directory that is polled by the Kofax Capture XML Auto-Import must be the same as the registry value `"TOPCALL\TCCCD\Options\Tclfi_out"`.

1. You have to configure TC/LINK-CCD to get the TIFF alternative for the attachments:

HKLM\Software\TOPCALL\TCCCD\General\FmtFileAttachment= "B(TIF)"

It is also possible to configure to get the Kofax Communication Server image as TIFF if there is no TIFF already available; that way you can also forward incoming faxes to Kofax Capture:

HKLM\Software\TOPCALL\TCCCD\General\FmtFileAttachment= "B(TIF)I"

2. To enable import of the email body text including a cover page, set:

HKLM\Software\TOPCALL\TCCCD\General\FmtRtfBody="IB (TIF) "

HKLM\Software\TOPCALL\TCCCD\General\CompatibilityNoCover=0

HKLM\Software\TOPCALL\TCCCD\Topcall\IncludeCover=1

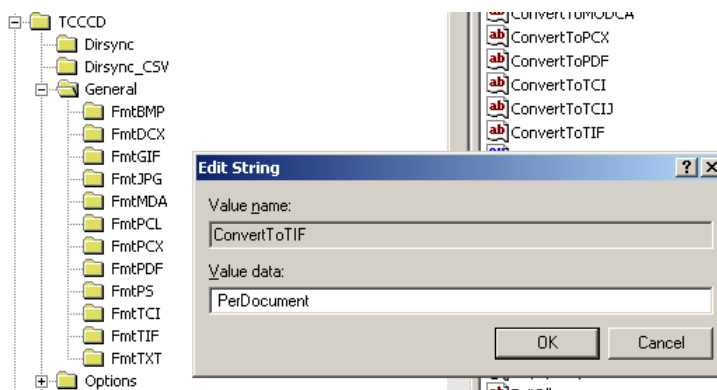
If you do not need cover sheet data in the TIFF image of the body text, set:

HKLM\Software\TOPCALL\TCCCD\General\FmtRtfBody="B (TIF) I"

HKLM\Software\TOPCALL\TCCCD\General\CompatibilityNoCover=1

HKLM\Software\TOPCALL\TCCCD\Topcall\IncludeCover=0

3. Registry value HKLM\Software\TOPCALL\TCCCD\General\ConvertToTif should be set to PerDocument (to render attachments and body) or to PerAttachment (to render attachments only).



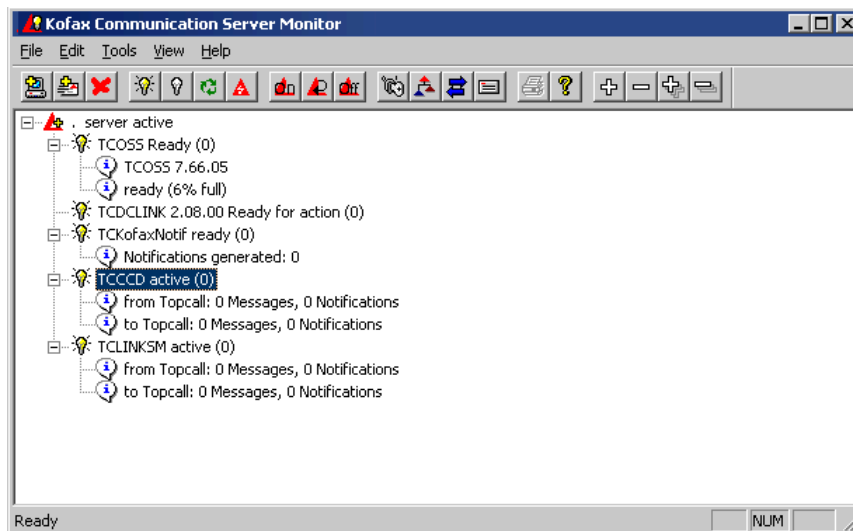
Note Other TC/LINK-CCD features such as notifications back to KCS (TC/ReleaseScript) are optional and therefore not further explained further in this guide. If you need more information, see the *TC/LINK-CCD Manual*.

For information about TC/BatchCollector, consult the *TC/LINK-CCD Manual*.

For information about the preceding settings, see the *TC/LINK Technical Manual*.

4. Restart TC/LINK-CCD to apply the changes.

5. Start TC/Monitor and verify that everything is running:



Additional Information

This section provides additional information about EmailConnect.

Binary Files

It is possible to import binary files into Kofax Capture, such as a fallback for files that were not handled by the document converter, or additionally to the image files.

In the Kofax Capture notation, binary files are called eDocuments. Not all export connectors and engines support them.

The sample export connectors delivered with Kofax Capture (text release, database release) do support eDocuments.

The section below describes how support for binary files is implemented in one of the sample XSLT scripts provided with TCCCD. This is done by adding the binary file as an additional page to the document. If an image file also exists, Kofax Capture does not attempt any recognition or indexing for the binary file. The file is transported from engine to engine and finally exported to the backend system.

Changes in TCCCD configuration:

For this purpose, modify TC/LINK-CCD registry values General\FmtFileAttachment and General\FmtRtfBody by enclosing the value in brackets and adding “&B” at the end.

Example:

“B(TIF)I” becomes “(B(TIF)I)&B”

This means that the TIFF alternative (from TIFF printer) or image alternative, and additionally original binary content.

If you use the standard XSLT scripts delivered with TCCCD, you must use the XSLT script TCXMLOut_CCD_multi_xslt, as only this script supports binary files.

Therefore, set the following registry value:

```
HKLM\Software\TOPCALL\TCCCD\Options\Out\XMLTransform=  
"c:\tcoss\tclp\TCXMLOut_CCD_multi.xslt"
```

Depending on the destination address, this script optionally imports binary files into Kofax Capture. To enable binary file import for a send order, the destination address must hold the batch class name, followed by ".bin".

Example: "TopcallBatchClass.bin"

If no ".bin" suffix is detected in the destination address, no binary files are imported into Kofax Capture.

For each document, TIFF image and binary file are rendered as separate pages. The relative position of the attachment is written to the OriginalFileName attribute of each document page. This position is the same for a binary attachment and for its TIFF alternative.

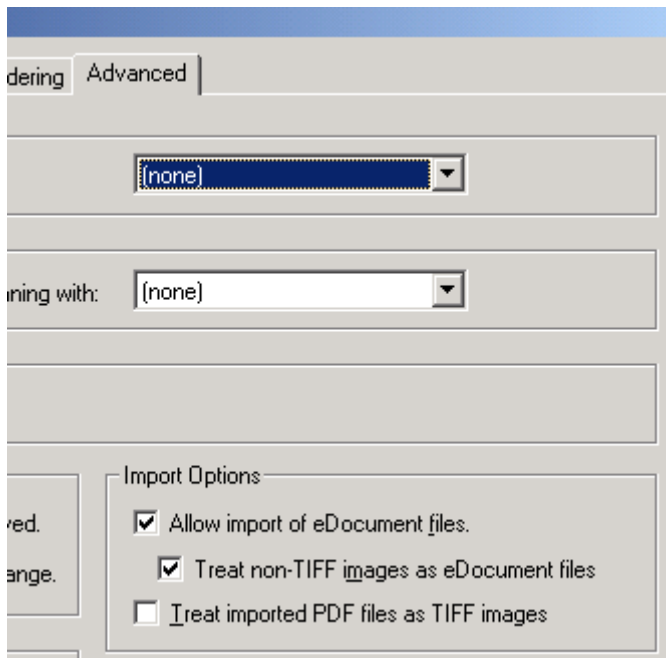
Sample fragment from XML import file, showing the first attachment of a message:

```
<Document>  
<Pages>  
<Page ImportFileName="C:\TCCCD\TC_TO_CCD\TCFI001A.tif" OriginalFileName="1"/>  
<Page ImportFileName="C:\TCCCD\TC_TO_CCD\TCFI001A.doc" OriginalFileName="1"/>  
</Pages>  
</Document>
```

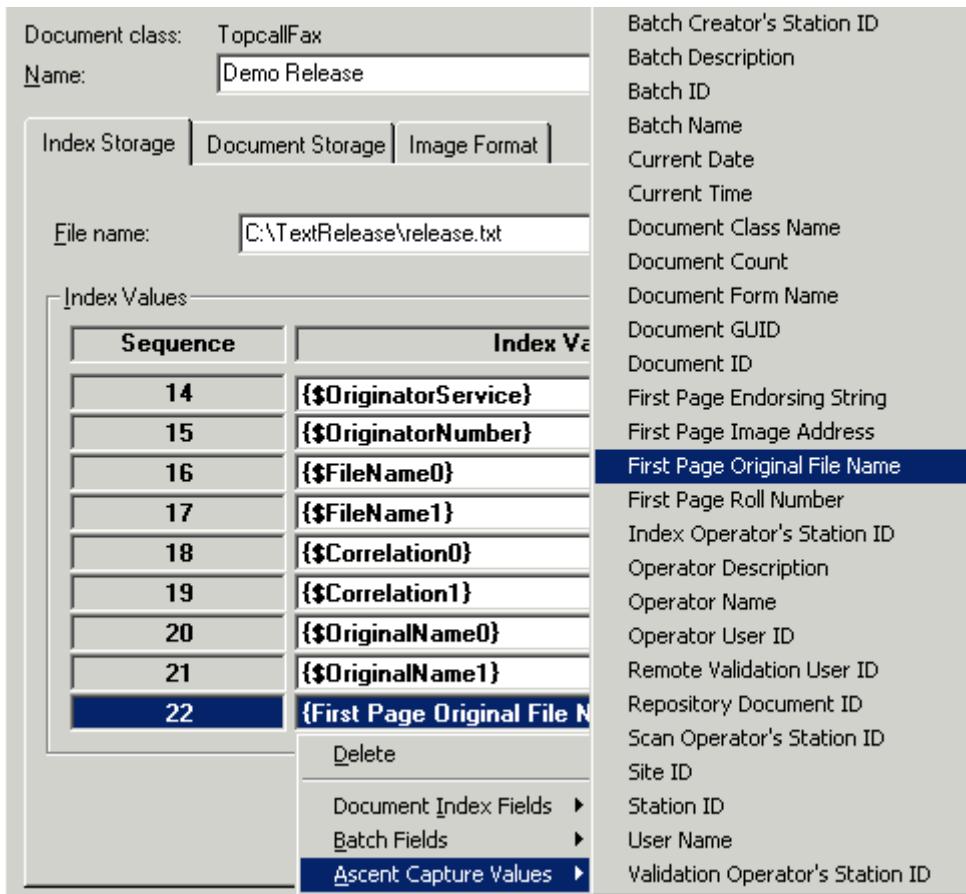
Note Kofax Capture appends the file extension to this value. For example, it converts "1" to "1.tif" or "1.doc". Nevertheless, the attribute is maintained throughout batch processing and can be used by scripts for correlating TIFF files and original binary files.

Changes in Kofax Capture configuration:

In the Batch Class Advanced Properties, configure support for eDocument files.



To release the “OriginalFileName” parameter via an export connector, select the Kofax Capture Value “First Page Original File Name” in the export setup.



To make your changes effective, you have to publish the batch class again.

Other possible configurations:

The correlation value (relative position of the attachment) is stored in the attachment’s `ts_content_id` field (see XSLT script for details). This value can also be written to batch fields or index fields. Yet, writing to index fields is only possible if you specify a form type in the XML auto-import file.

A customized XSLT script can recognize the original binary attachment via its `ts_comment` value. Image alternatives created by TCLINK have a `ts_comment` value of “TCLINK Converted Image” or “TCLINK Image”. For the original binary file, the `ts_comment` field holds the original file name.

Handling of documents without image content:

If the batch class contains several form types, standard Kofax Capture Recognition cannot recognize to which document type the binary document belongs. Therefore, the batch will go to Quality Control. In a customized XSLT script, it might make sense to assign binary-only documents to a fixed form type, to bypass the recognition step for them.

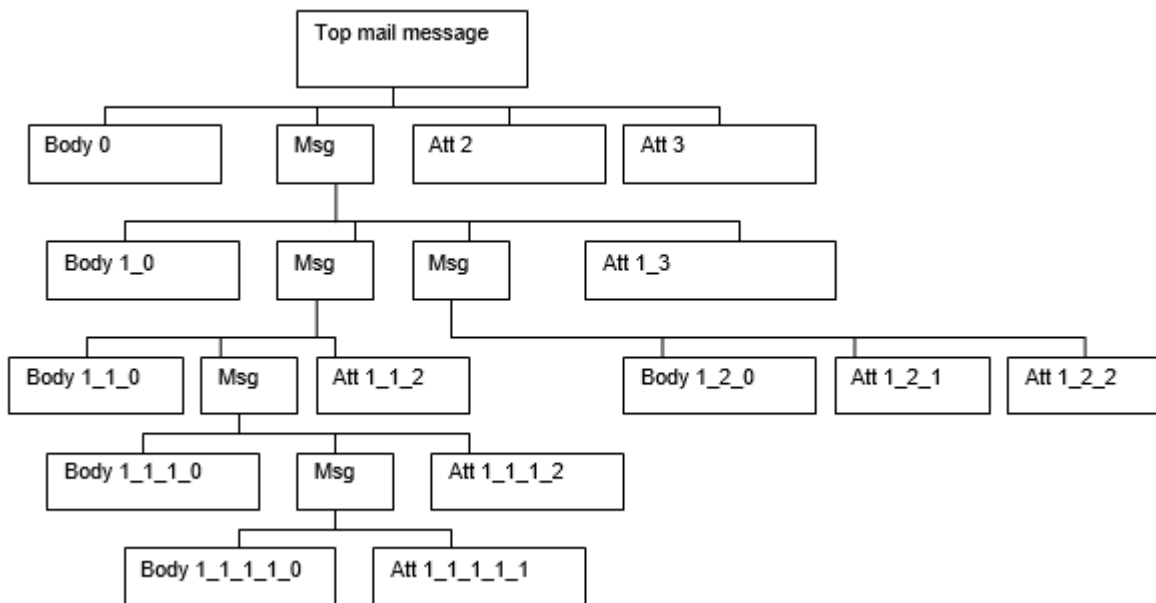
Positional Information

For every attachment, and also for the message body, TCCCD stores the item's position in the TCSI field TS_CONTENT_ID.

The main message body gets a TS_CONTENT_ID value of "0", and the other immediate sub-elements are "1", "2", "3", etc.

If one of these sub-elements (such as 2) is an attached message, it has in turn a message body (2_0) and attachments (2_1 etc).

Example:



If an attachment has binary and image representations, they all get the same ts_content_id value.

Using Coversheets and Template Text

When TC/LINK-SM receives an email, it can add items from the sender's default template, such as

- A coversheet
- Text or graphics from the default template

These items can only be included in the message body TIFF file, if TC/LINK-SM creates a TCI image for the message body.

To force TCCCD to use this TCI image and concatenate it with the items from the default template, make sure that TCCCD registry value General\FmtRtfBody contains "I" before "B(TIF)", e.g. "ITB(TIF)".

Main message coversheet

If the message body text is imported into Kofax Capture, you may decide to use a cover page. For example, the top of the cover sheet may be used for recognition of the message body.

To include a cover for the main message body, TCCCD must be configured to include cover sheet data:

- HKLM\Software\TOPCALL\TCCCD\General\CompatibilityNoCover=0
- HKLM\Software\TOPCALL\TCCCD\Topcall\IncludeCover=1

Additionally, a cover sheet must be specified in the send order to TCCCD.

Embedded message coversheet

It is also possible to add a coversheet to the body of an attached message, thus providing important meta information (subject, sender, recipient) and a hint for the recognition server. You can define a cover sheet for attached messages in the following registry value:

```
HKLM\Software\TOPCALL\TCCCD\AttMsgCover
```

This registry value must hold the cover sheet name in the syntax Folder\Filename or Folder/Filename, such as: "TCLINK/EMBMSG".

In the cover sheet, you can use the header variables (for originator and recipient) and the variable \$ERef\$ (for the message subject).

Configuration Examples

With TOPCALL TIFF printer

In all TIFF printer examples, usage of the TIFF printer must be configured in TC/LINK-SM.

Link	Registry key	Value	Description
TC/LINK-SM	General\PrintUseCaseFile	Set	Set to an existing message on TCOSS, where usage of the TIFF printer for messages to Kofax Capture is configured.

Render image only for body and attachments, with metadata for attached messages

Link	Registry key	Value	Description
TC/LINK-SM	General\AltForceBodyToTCI	1	Forces TCI image for message body (needed for cover sheet).
TC/CCD	General\ConvertToTif	PerDocument	One TIFF file per document.
TC/CCD	General\FmtRtfBody	ITB(TIF)	Prefer image or text, if not available: take TIFF alternative.
TC/CCD	General\FmtFileAttachment	B(TIF)	Prefer TIFF file from TIFF printer.
TC/CCD	General\AttMsgCover	Set	Set to an existing message on TCOSS, where a descriptive text for embedded messages is defined.

Render image and binary for body and attachments, with metadata for attached messages

Link	Registry key	Value	Description
TC/LINK-SM	General\AltForceBodyToTCI	1	Forces TCI image for message body (needed for cover sheet).
TC/CCD	General\ConvertToTif	PerDocument	One TIFF file per document.
TC/CCD	General\FmtRtfBody	(ITB(TIF))&B	Prefer image or text, if not available: take TIFF alternative. Additionally: binary file.
TC/CCD	General\FmtFileAttachment	(B(TIF))&B	Prefer TIFF file from TIFF printer. Additionally: binary file.
TC/CCD	General\AttMsgCover	Set	Set to an existing message on TCOSS, where a descriptive text for embedded messages is defined.

Render image only for body and attachments, no metadata for attached messages

Link	Registry key	Value	Description
TC/LINK-SM	General\AltForceBodyToTCI	0	
TC/CCD	General\ConvertToTif	PerDocument	One TIFF file per document.
TC/CCD	General\FmtRtfBody	B(TIF)	Prefer TIFF file from TIFF printer.
TC/CCD	General\FmtFileAttachment	B(TIF)	Prefer TIFF file from TIFF printer.
TC/CCD	General\AttMsgCover		Is empty, therefore no metadata.

Render image and binary for body and attachments, no metadata for attached messages.

Link	Registry key	Value	Description
TC/LINK-SM	General\AltForceBodyToTCI	0	
TC/CCD	General\ConvertToTif	PerDocument	One TIFF file per document.
TC/CCD	General\FmtRtfBody	(B(TIF))&B	Prefer TIFF file from TIFF printer Additionally: binary file.
TC/CCD	General\FmtFileAttachment	(B(TIF))&B	Prefer TIFF file from TIFF printer Additionally: binary file.
TC/CCD	General\AttMsgCover		

Render image only for attachments

Link	Registry key	Value	Description
TC/LINK-SM	General\AltForceBodyToTCI	0	
TC/CCD	General\ConvertToTif	PerAttachment	One TIFF file per attachment.

Link	Registry key	Value	Description
TC/CCD	General\FmtRtfBody	B(TIF)I	Is ignored, due to above value.
TC/CCD	General\FmtFileAttachment	B(TIF)I	Prefer TIFF file from TIFF printer.
TC/CCD	General\AttMsgCover		

Render image and binary for body and attachments

Link	Registry key	Value	Description
TC/LINK-SM	General\AltForceBodyToTCI	0	
TC/CCD	General\ConvertToTif	PerAttachment	One TIFF file per attachment.
TC/CCD	General\FmtRtfBody	B(TIF)I	Is ignored, due to above value.
TC/CCD	General\FmtFileAttachment	(B(TIF)I)&B	Prefer TIFF file from TIFF printer Additionally: binary file.
TC/CCD	General\AttMsgCover		

Without TOPCALL TIFF printer

Link	Registry key	Value	Description
In all examples where the TIFF printer is not used, the following TC/LINK-SM settings are needed.			
TC/LINK-SM	General\AltForceBodyToTCI	0	Not needed, force TCI via service capabilities or AltForceBinToTCI.
TC/LINK-SM	General\PrintUseCaseFile		Not set, as no TIFF printer used .

Render image only (body and attachments), with metadata for attached messages

Link	Registry key	Value	Description
TC/CCD	General\ConvertToTif	PerDocument	One TIFF file per document.
TC/CCD	General\FmtRtfBody	IT	Take image or text alternative.
TC/CCD	General\FmtFileAttachment	I	Take image alternative.
TC/CCD	General\AttMsgCover	Set	Set to an existing message on TCOSS, where a descriptive text for embedded messages is defined.

Render image and binary for body and attachments, with metadata for attached messages

Link	Registry key	Value	Description
TC/CCD	General\ConvertToTif	PerDocument	One TIFF file per document.
TC/CCD	General\FmtRtfBody	(IT)&B	Take image or text, and additionally the binary file.
TC/CCD	General\FmtFileAttachment	I&B	Take image and binary file.

Link	Registry key	Value	Description
TC/CCD	General\AttMsgCover	Set	Set to an existing message on TCOSS, where a descriptive text for embedded messages is defined.

Render image only for body and attachments, no metadata for attached messages

Link	Registry key	Value	Description
TC/CCD	General\ConvertToTif	PerDocument	One TIFF file per document.
TC/CCD	General\FmtRtfBody	IT	Image or text.
TC/CCD	General\FmtFileAttachment	I	Image.
TC/CCD	General\AttMsgCover		Is empty, therefore no metadata.

Render image and binary for body and attachments, no metadata for attached messages

Link	Registry key	Value	Description
TC/CCD	General\ConvertToTif	PerDocument	One TIFF file per document.
TC/CCD	General\FmtRtfBody	(IT)&B	Take image or text, and additionally the binary file.
TC/CCD	General\FmtFileAttachment	I&B	Take image and binary file.
TC/CCD	General\AttMsgCover		Is empty, therefore no metadata.

Render image only for attachments

Link	Registry key	Value	Description
TC/CCD	General\ConvertToTif	PerAttachment	One TIFF file per attachment.
TC/CCD	General\FmtRtfBody	I	Is ignored, due to above value.
TC/CCD	General\FmtFileAttachment	I	Take image alternative.
TC/CCD	General\AttMsgCover		

Render image and binary for body and attachments

Link	Registry key	Value	Description
TC/CCD	General\ConvertToTif	PerAttachment	One TIFF file per attachment.
TC/CCD	General\FmtRtfBody	I	Is ignored, due to above value.
TC/CCD	General\FmtFileAttachment	I&B	Take image and binary file.
TC/CCD	General\AttMsgCover		

Chapter 6

Licensing and Pricing

As Advanced Email Capture consists of several standard Kofax components, you need a set of licenses. Please check the latest price list for further information about a solution and a connected solution price for the product bundle.