

Kofax Communication Server

KCS License Tool Technical Manual

Version: 10.3.0

Date: 2019-12-13

The logo for Kofax, consisting of the word "KOFAX" in a bold, blue, sans-serif font.

© 2019 Kofax. All rights reserved.

Kofax is a trademark of Kofax, Inc., registered in the U.S. and/or other countries. All other trademarks are the property of their respective owners. No part of this publication may be reproduced, stored, or transmitted in any form without the prior written permission of Kofax.

Table of Contents

Chapter 1: Preface	4
Chapter 2: Installation	5
Chapter 3: Usage	6
Old License Mode.....	7
New License Mode.....	8
Test Mode.....	9
Chapter 4: Configuration	10
Chapter 5: Hints	11
Unicode Support.....	11

Chapter 1

Preface

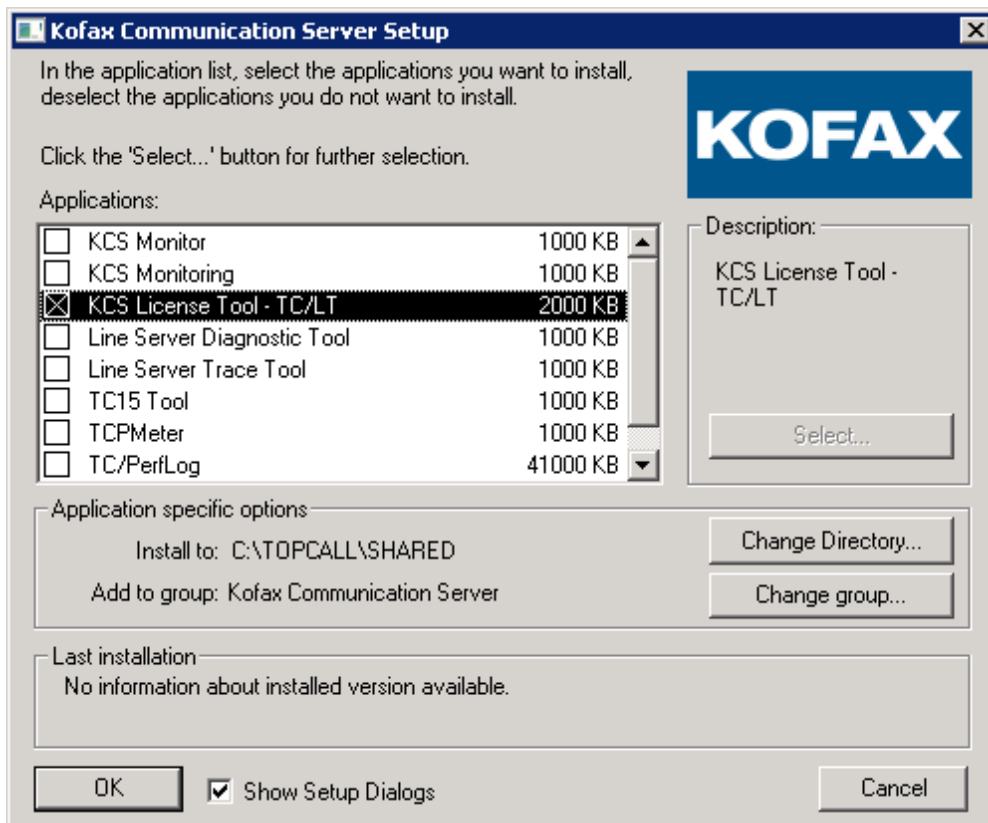
The License tool (TC/LT) is used to install, edit, and remove licenses on a TCOSS server. It accesses the TCOSS server over the network, so the tool must not necessarily be executed locally on the TCOSS server.

Important The Kofax Communication Server and its components formerly used the name TOPCALL. Some screen shots and texts in this manual may still use the former name.

Chapter 2

Installation

TC/LT can be installed with the KCS setup. It is located in the Common > Administrative Tools group.



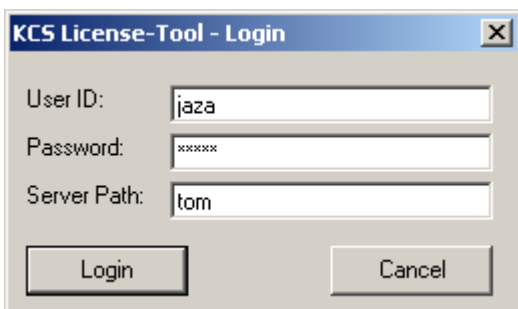
Setup copies all necessary program files to c:\topcall\shared and creates a shortcut, named License Maintenance in the Kofax Communication Server start menu group, to launch TC/LT.



Chapter 3

Usage

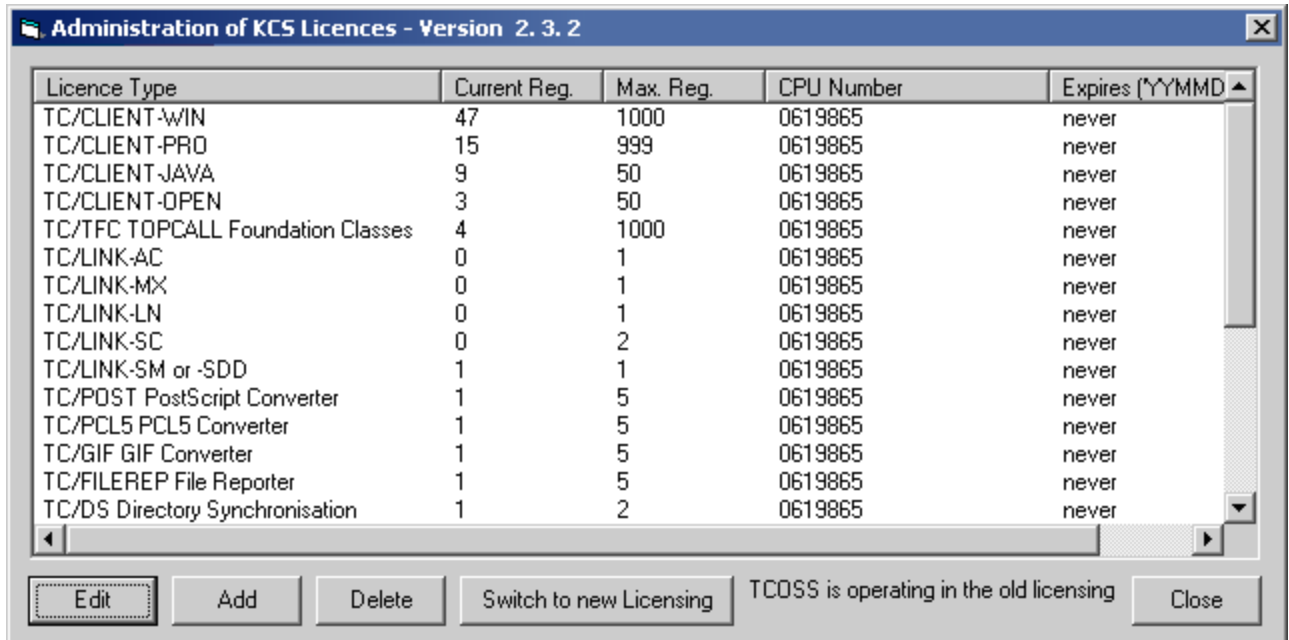
Launch TC/LT with the License Maintenance shortcut in the Kofax Communication Server start menu group. First you have to login on the server where you want to add or edit a license.



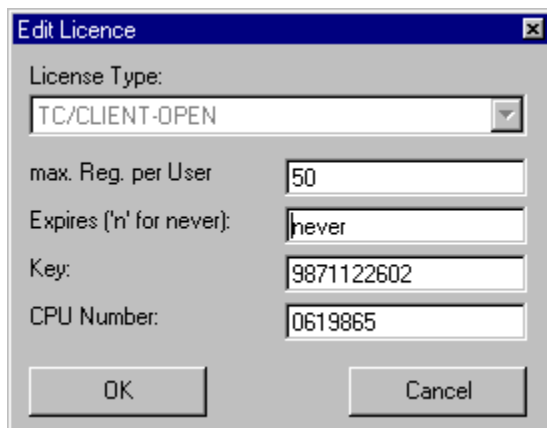
The image shows a Windows-style dialog box titled "KCS License-Tool - Login". It contains three text input fields: "User ID:" with the text "jaza", "Password:" with masked characters "*****", and "Server Path:" with the text "tom". At the bottom of the dialog are two buttons: "Login" and "Cancel".

After login you see all the licenses which are used on this KCS system with their actual registrations and their highest possible registration count. You also see the CPU Number.

Old License Mode



1. Select a license and click **Edit** to edit a license. Click **Add** to add a new license to this server:



Here you can choose which License Type you want to add (of course just in case of adding). Maximum registrations, the date when it expires and the key must be typed in. The CPU Number too, if it is desired.

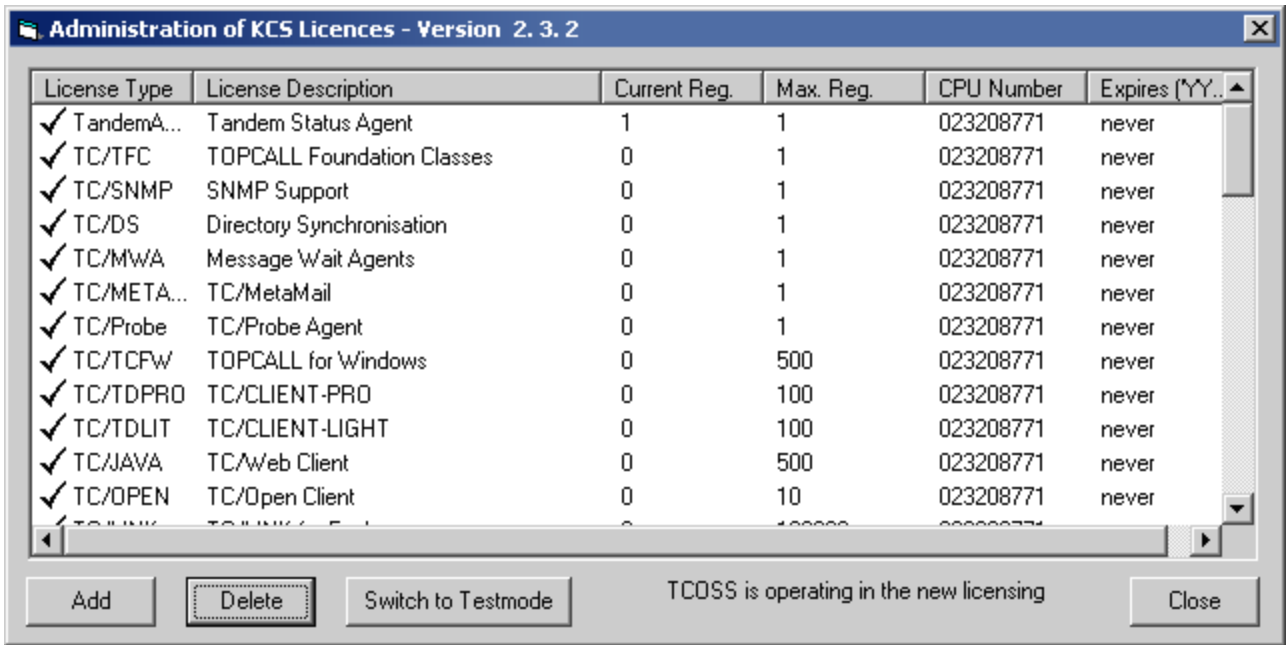
Since a Link Server or an archive Server may run on a different machine the CPU Number of the machine where it is running on is needed.

2. Now click **OK** and you come back to the administration of the KCS licenses. Click **Close** there to quit the program.

- By clicking the 'Upgrade to new Licensing' Button, all existing licenses will be saved in a file, which you can specify, and afterwards the KCS License Tool and TCOSS will be switched into the new License Mode.

Note If you switch to the new License Mode all existing licenses will be removed from TCOSS.

New License Mode



- Click **Add** to add a new license to this server:

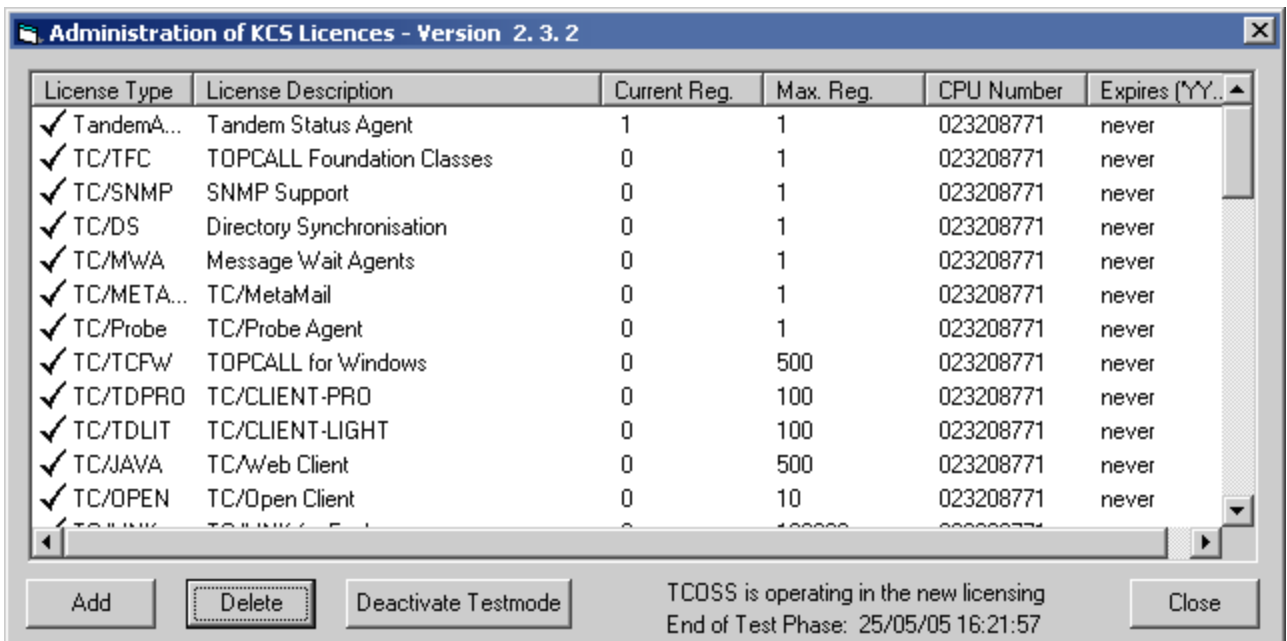
Note Within the new license mode it is no longer possible to edit an existing license. For adding more licenses of an existing one, you have to delete the old one first and then add the new one.



2. Enter the license key, which is given to you by Kofax either via the text box or the **Open** button, which opens a Common Dialog, where you can select a KCS License File.
The license file can contain more one or more KCS licenses.
3. Click **OK** to return to the administration of the KCS licenses. Click **Close** to quit the program.
4. By clicking the **Switch to Testmode** button, TCOSS will be switched into the Test Mode.
The test phase lasts seven days with no license checks; afterwards there will be a recovery phase of 30 days with regular license checking.

Test Mode

If you clicked the **Switch to Testmode** button, then the KCS License Tool will look like the screenshot below. Instead of the button there will appear a label, which tells you how long TCOSS will remain in test mode (The time format is: DD/MM/YY).



During this time there are no license checks done by TCOSS and you can see the number of current used licenses in the "Current Reg." Column. The first column shows you whether you have installed enough licenses or you have installed too little licenses.

Since KCS 7.47.04 it is possible to disable the test mode by clicking the **Deactivate Testmode** button. This will switch the TCOSS in the new licensing mode back.

If licenses are installed and activated and you switch to test mode, then the user/application license counts (shown in the Current Reg. column) are reset to 0. The same happens when you deactivate the test mode. Channel licenses are not affected.

Chapter 4

Configuration

The configuration settings are stored in the windows registry under the key *HKEY_LOCAL_MACHINE\Software\Topcall\TCLT*.

After installation in the section TCTI the parameter LINKTYPES is set to TCP/IP and TRANSPORT is set to RPC. Changes must be carried out with the registration editor (REGEDIT or REGEDT32) according to the TCTI Configuration manual.

Chapter 5

Hints

When entering the license key e.g. for a link server to TCOSS, and leading zeros of the CPU number are not entered, the license tool (and TCOSS) accepts the entry, but the link cannot be started: '621 - link registration limit reached' will show up.

Entering the CPU number with the leading zero(s) -> link can start up properly.

The date format is YYMMDD.

For a Model 281 (105-1) Link Server license key enter "1" as number of registrations.

For a Model 282 (105-2) Link Server license key enter "2" as number of registrations.

For a Model 283 (105-3) Link Server license key enter "3" as number of registrations.

For a Model 285 (105-4U) Link Server license key enter "100" as number of registrations.

For a link directory synchronization license key also enter "100" as number of registrations.

Unicode Support

Unicode is not supported. You cannot log in as a Unicode user.