

Kofax Communication Server

Web Services for Fax Technical Manual

Version: 10.3.0

Date: 2019-12-13

The logo for Kofax, consisting of the word "KOFAX" in a bold, blue, sans-serif font.

© 2019 Kofax. All rights reserved.

Kofax is a trademark of Kofax, Inc., registered in the U.S. and/or other countries. All other trademarks are the property of their respective owners. No part of this publication may be reproduced, stored, or transmitted in any form without the prior written permission of Kofax.

Table of Contents

Chapter 1: Preface	4
Chapter 2: Overview	6
Chapter 3: Interface Functions	8
GetInterfaceVersion (WS Version 1.1 Only).....	8
GetServerProperties.....	9
GetUserList.....	10
GetFax.....	11
GetFax20 (WS Version 1.1 Only).....	14
ConfirmFax.....	17
SendFax.....	18

Chapter 1

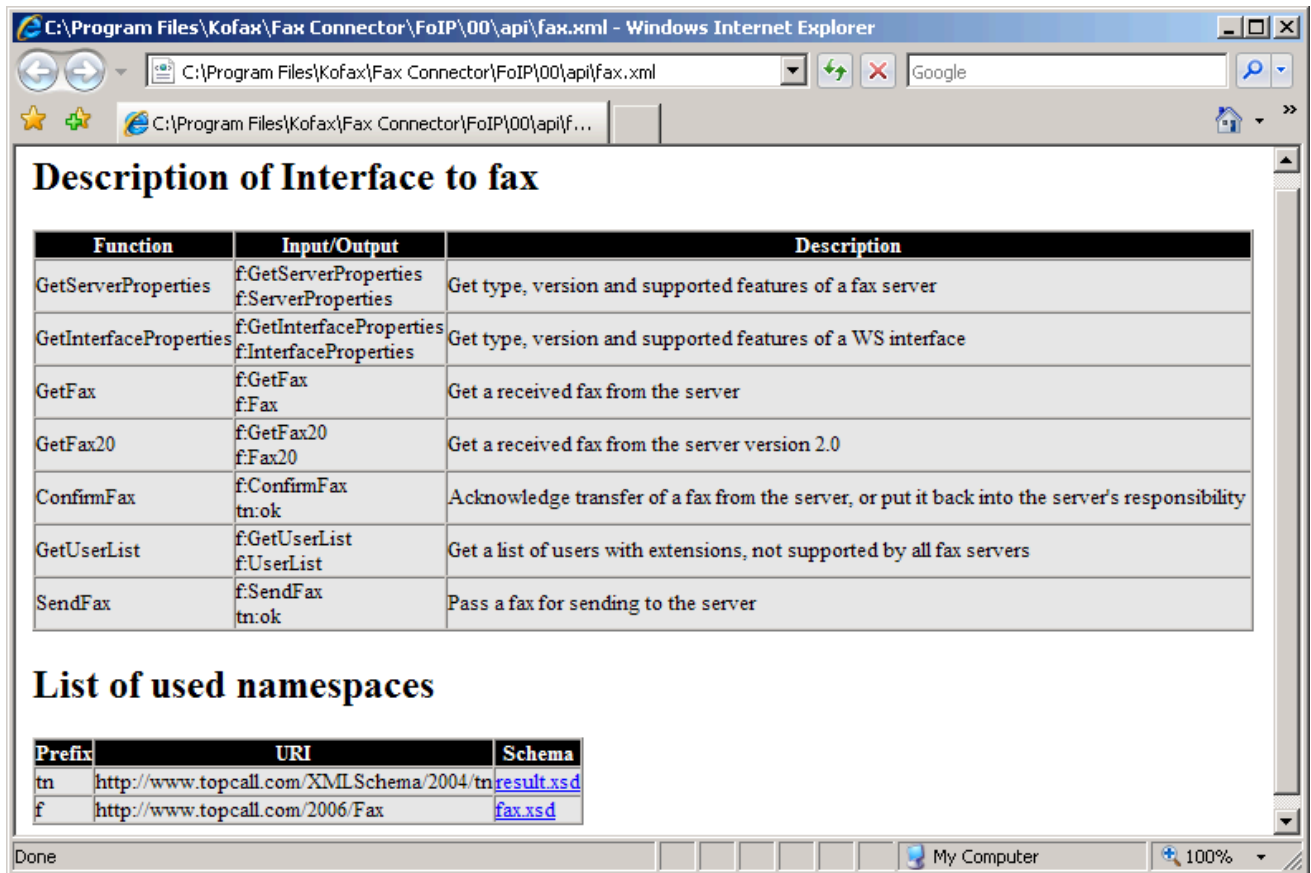
Preface

This document contains a description of the web service functions defined in the file fax.wSDL.

You can get a short description of all functions for a specific WSDL file by opening the corresponding xml file in the API sub-directory with any tool that supports XML style sheets (e.g. Internet Explorer).

Example:

To display the interface for fax.wSDL in Kofax Communication Server Fax over IP application, open the file C:\Program Files\Kofax\Fax Connector\FoIP\00\api\fax.xml with Internet Explorer. A sample screenshot is shown below:



The screenshot shows a Windows Internet Explorer browser window displaying the 'Description of Interface to fax' page. The address bar shows the file path: C:\Program Files\Kofax\Fax Connector\FoIP\00\api\fax.xml. The page content includes a table of functions and a list of namespaces.

Function	Input/Output	Description
GetServerProperties	f:GetServerProperties f:ServerProperties	Get type, version and supported features of a fax server
GetInterfaceProperties	f:GetInterfaceProperties f:InterfaceProperties	Get type, version and supported features of a WS interface
GetFax	f:GetFax f:Fax	Get a received fax from the server
GetFax20	f:GetFax20 f:Fax20	Get a received fax from the server version 2.0
ConfirmFax	f:ConfirmFax tn:ok	Acknowledge transfer of a fax from the server, or put it back into the server's responsibility
GetUserList	f:GetUserList f:UserList	Get a list of users with extensions, not supported by all fax servers
SendFax	f:SendFax tn:ok	Pass a fax for sending to the server

Prefix	URI	Schema
tn	http://www.topcall.com/XMLSchema/2004/tn	result.xsd
f	http://www.topcall.com/2006/Fax	fax.xsd

Note You need to adapt the path to the file fax.xml to display the brief interface description in other applications, e.g., TWS or RWS.

The list of namespaces below contains the name and a link the schema files that defines the detailed parameter description for each call. It is recommended to use any XML tool (e.g. XML Spy) to view the schema files.

Important The Kofax Communication Server and its components formerly used the name TOPCALL. Some screen shots and texts in this manual may still use the former name.

Chapter 2

Overview

These functions are defined in fax.wsdl. The table below lists all available functions with a short description.

Interface version 1.0

Function	Input/Output	Description
GetServerProperties	f:GetServerProperties f:ServerProperties	Get type, version and supported features of a fax server
GetFax	f:GetFax f:Fax	Get a received fax from the server
ConfirmFax	f:ConfirmFax tn:ok	Acknowledge transfer of a fax from the server, or put it back into the server's responsibility
GetUserList	f:GetUserList f:UserList	Get a list of users with extensions, not supported by all fax servers
SendFax	f:SendFax tn:ok	Pass a fax for sending to the server

Interface version 1.1

Version 1.1 of the interface implements following changes in comparison with version 1.0. Version 1.1 is fully compatible with version 1.0:

1. New function GetInterfaceProperties that returns properties of the WS interface.
2. Two elements of the GetServerProperties output have been extended:
 - a. The Version element to the format
`WSInterface:<FaxConnector>:<FaxServerComInterface>:<FaxServer>`
to provide up to 4 version information strings of 4 involved components, separated by the ':' character, the WSInterface information is mandatory, any of the rest may be replaced by an empty string.
 - b. SupportedOptions extended to be a string instead of enum restricted to 2 different values. For compatibility with version 1.0 still only those values defined for version 1.0 are allowed.
3. The GetFax20 extends the GetFax function, the input parameters remain identical but the output has been changed in the following way:
 - a. ErrorCode extended to be a string instead of enum restricted to 2 different values

(new error category may be easily added.)

- b. TimeStart parameter optional instead of mandatory.
 - c. Body parameter optional.
 - d. Empty fax queue indicated by empty Correlation parameter (no Fault anymore.)
 - e. Optional callerID parameter added.
 - f. ExtHeaderField optional parameter defined for future extensions.
4. The table below lists all available functions with a short description.

Function	Input/Output	Description
GetServerProperties	f:GetServerProperties f:ServerProperties	Get type, version and supported features of a fax server
GetInterfaceProperties	f:GetInterfaceProperties f:InterfaceProperties	Get type, version and supported features of a WS interface
GetFax	f:GetFax f:Fax	Get a received fax from the server
GetFax20	f:GetFax20 f:Fax20	Get a received fax from the server version 2.0
ConfirmFax	f:ConfirmFax tn:ok	Acknowledge transfer of a fax from the server, or put it back into the server's responsibility
GetUserList	f:GetUserList f:UserList	Get a list of users with extensions, not supported by all fax servers
SendFax	f:SendFax tn:ok	Pass a fax for sending to the server

List of used namespaces

Prefix	URI	Schema
tn	http://www.topcall.com/ XMLSchema/2004/tn	result.xsd
F	http://www.topcall.com/2006/Fax	fax.xsd

Chapter 3

Interface Functions

This section describes the interface functions.

GetInterfaceVersion (WS Version 1.1 Only)

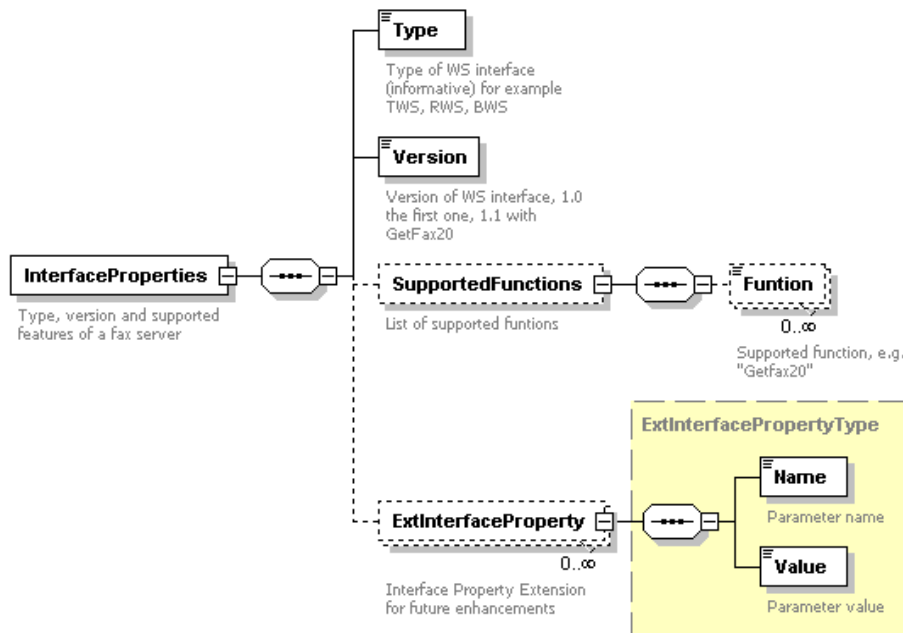
Reads the WebService interface properties, i.e., type, version and a list of supported features. May also be used to check the connection to the WS interface (but not to the server behind it). It does not change anything on the server.

Input:

GetInterfaceProperties

Query type, version and supported functions of a Web Service interface

Output:



Example Output

```
<?xml version="1.0" encoding="UTF-8"?>
```



```

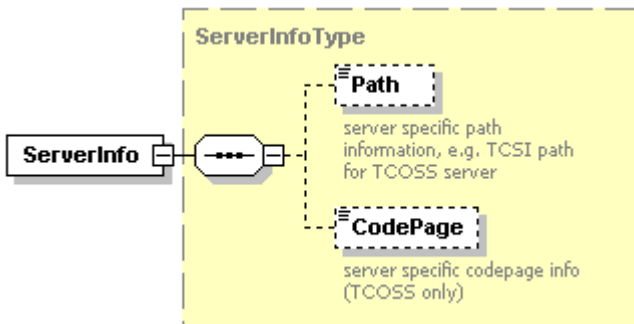
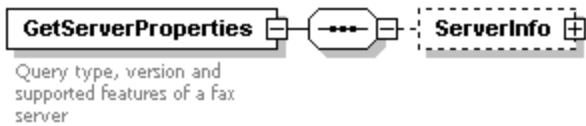
<ServerProperties xmlns="http://www.topcall.com/2006/Fax">
...<Type>TWS</Type> ...<Version>1.1</Version>
...<SupportedFunctions>
.....< Function>GetInterfaceProperties</Function>
.....< Function>GetFax20</Function>
.....< Function>GetFax</Function>
.....< Function>ConfirmFax</Function>
.....< Function>GetServerProperties</Function>
...</SupportedFunctions>
</ServerProperties>
    
```

GetServerProperties

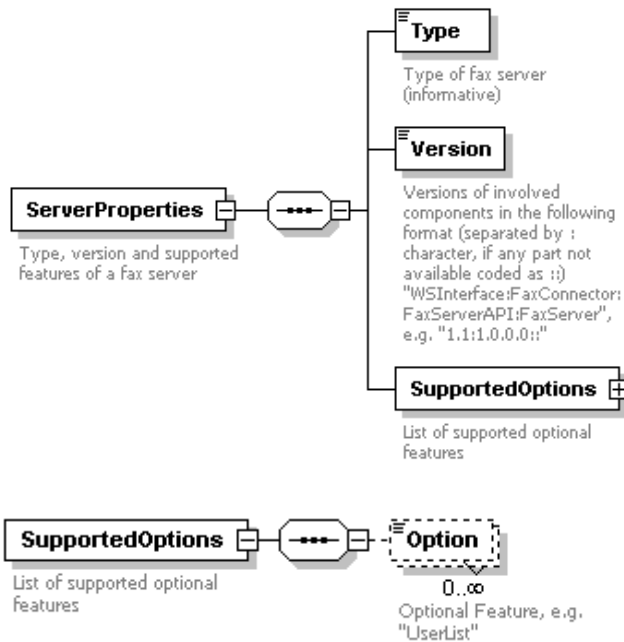
Reads the server properties, i.e. type, version and a list of supported features. May also be used to check the connection to the server. It does not change anything on the server.

The optional “ServerInfo” element allows to override server-specific settings which are taken from the TWS configuration if not specified.

Input:



Output:



Example Output (version 1.0)

```

<?xml version="1.0" encoding="UTF-8"?>
<ServerProperties xmlns="http://www.topcall.com/2006/Fax">
...<Type>TCOSS</Type>
...<Version>1.0</Version>
...<SupportedOptions>
.....<Option>UserList</Option>
.....<Option>SharedServer</Option>
...</SupportedOptions>
</ServerProperties>
    
```

Example Output (version 1.1)

```

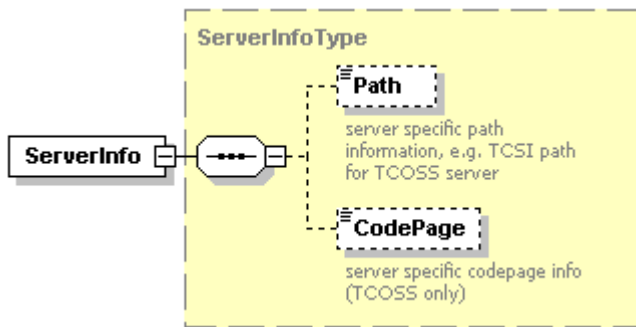
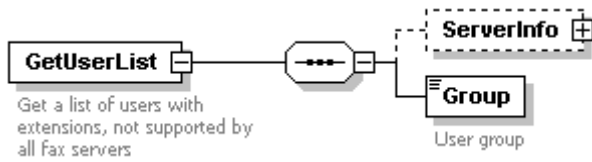
<?xml version="1.0" encoding="UTF-8"?>
<ServerProperties xmlns="http://www.topcall.com/2006/Fax">
...<Type>TCOSS</Type>
...<Version>1.1:1.0.0.0:9.0.0.6:</Version>
...<SupportedOptions>
.....<Option>UserList</Option>
.....<Option>SharedServer</Option>
...</SupportedOptions>
</ServerProperties>
    
```

GetUserList

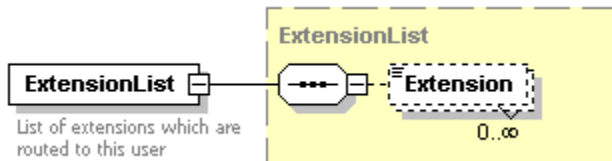
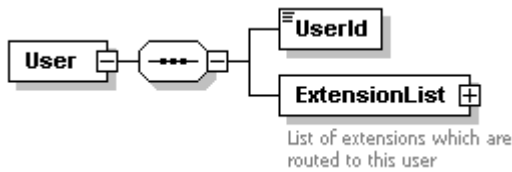
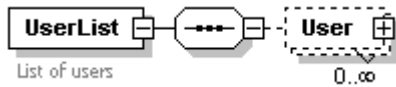
Get a list of users with extensions. The “Group” parameter is mapped to a TCOSS user name prefix, e.g. group “ACF” means all users whose names start with “ACF”, like “ACF1” or “ACFtwo”.

The optional “ServerInfo” element allows to override server-specific settings which are taken from the TWS configuration if not specified.

Input:



Output:

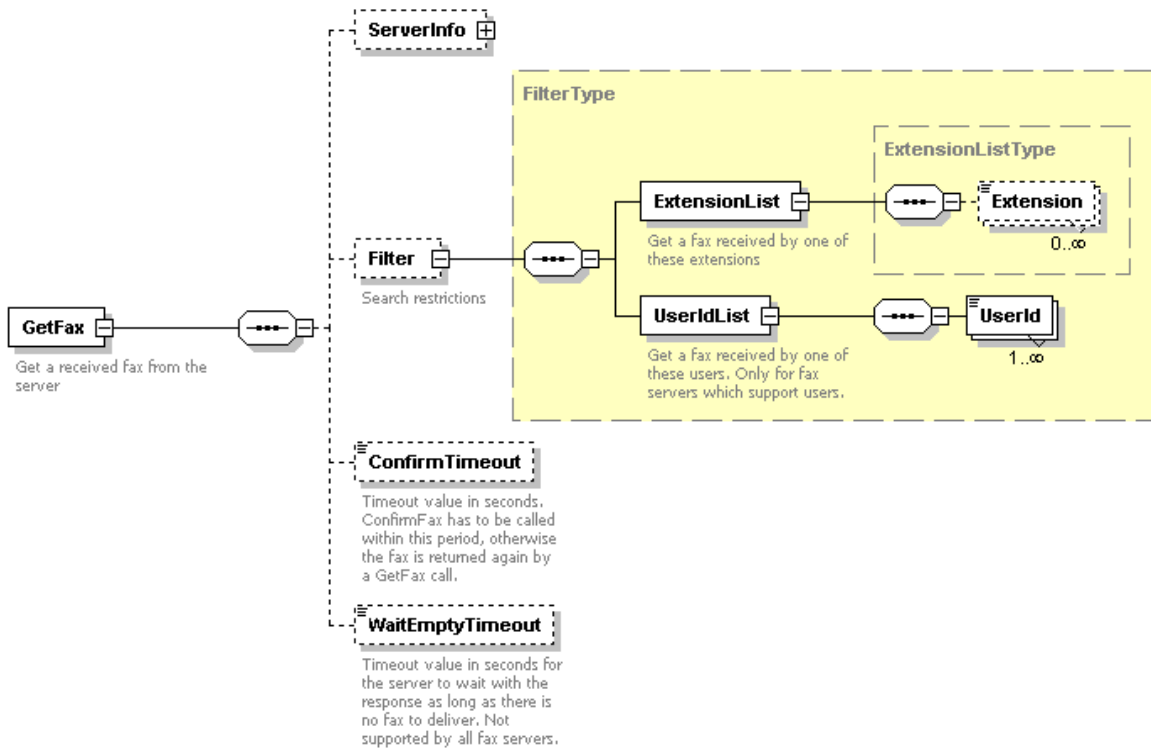


The extension list includes all inactive addresses which are of type "set_fax_address".

GetFax

Get a received fax from the server.

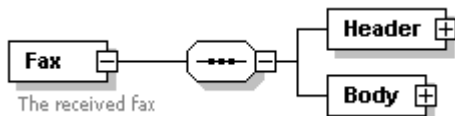
Input:

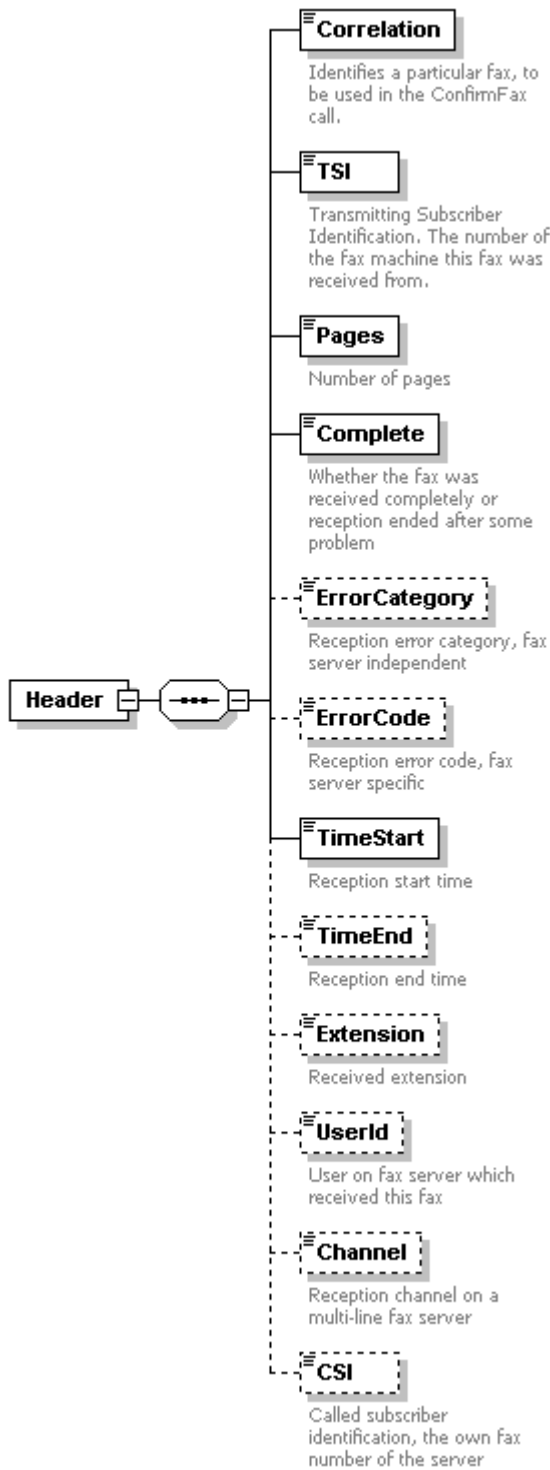


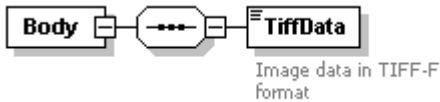
Only the “UserIdList” is supported in the search “Filter” element. Users are prioritized according to their position in the list, i.e. the GetFax function is implemented as a loop which checks the user inboxes in the specified order until the first message is found.

The optional “ServerInfo” element allows to override server-specific settings which are taken from the TWS configuration if not specified.

Output:



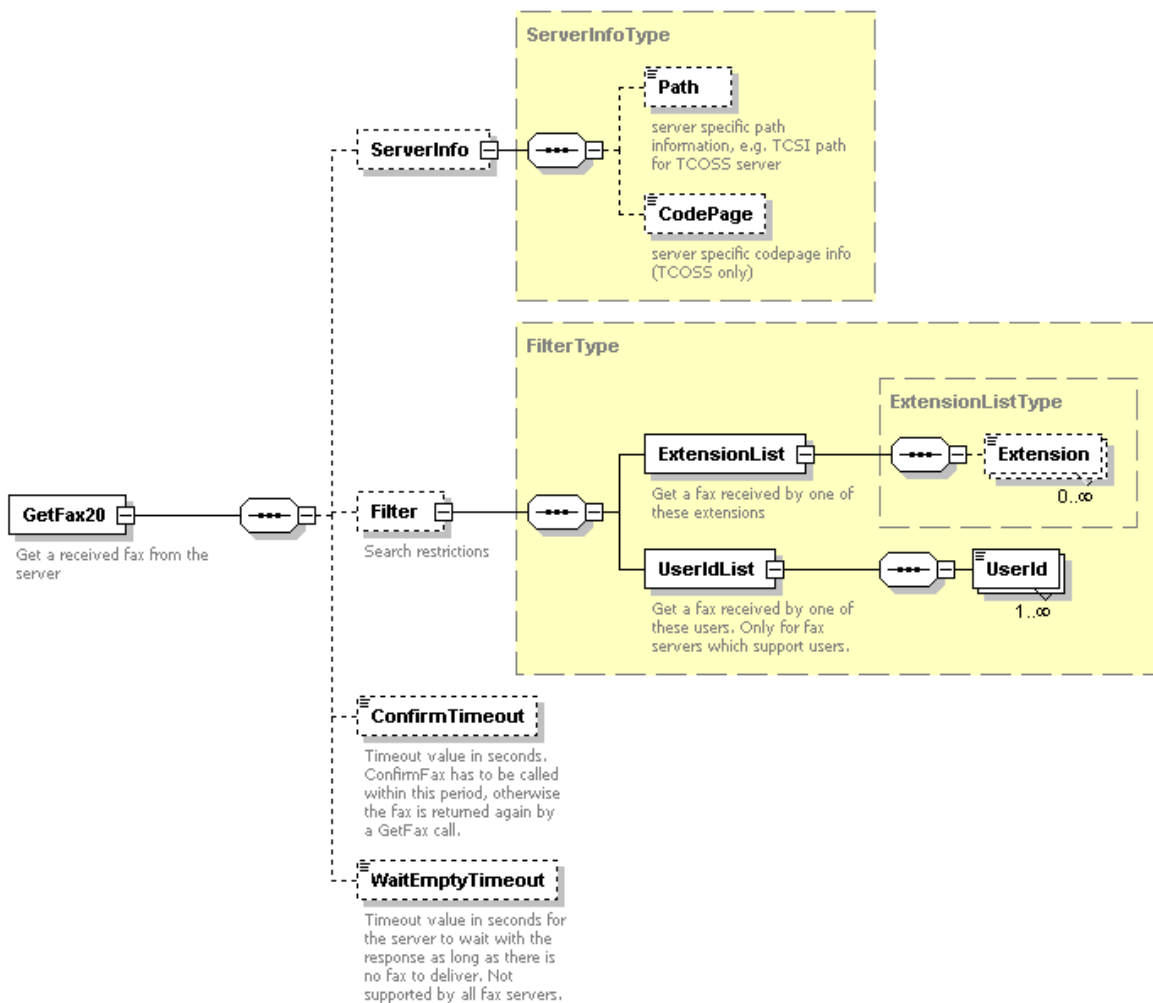




GetFax20 (WS Version 1.1 Only)

Get a received fax from the server.

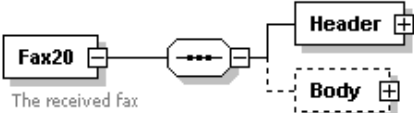
Input: (identical with that of GetFax):

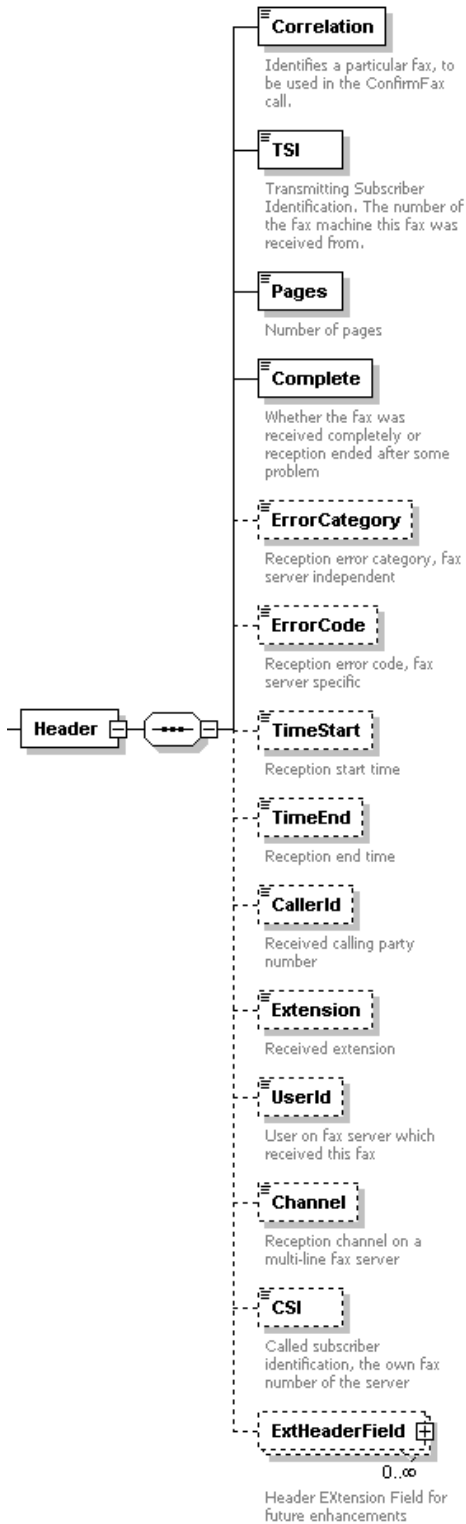


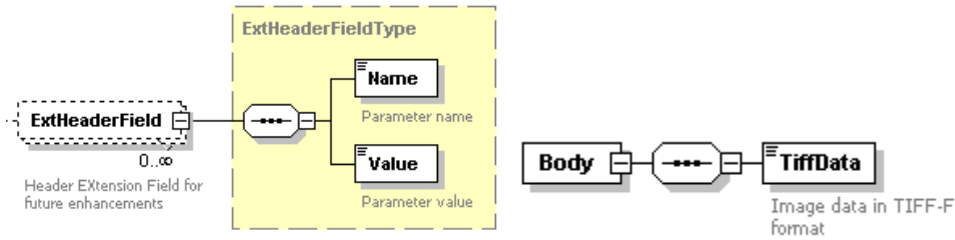
Only the “UserIdList” is supported in the search “Filter” element. Users are prioritized according to their position in the list, i.e. the GetFax function is implemented as a loop which checks the user inboxes in the specified order until the first message is found.

The optional “ServerInfo” element allows to override server-specific settings which are taken from the TWS configuration if not specified.

Output:







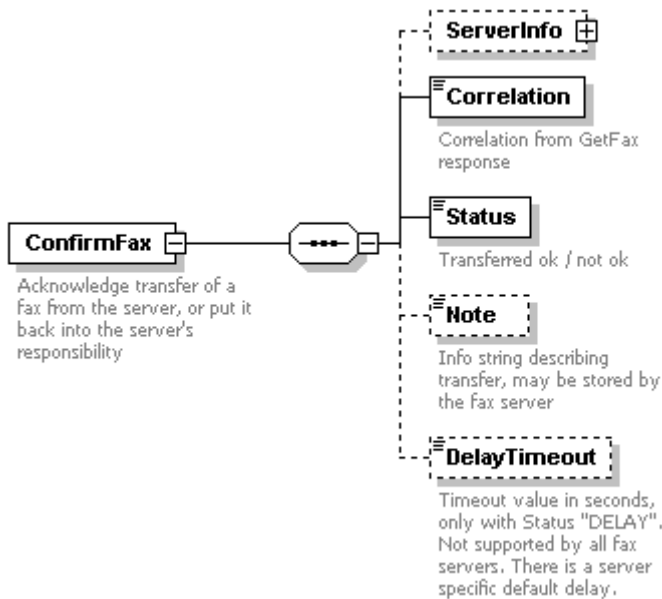
Example Empty Fax Response (version 1.1)

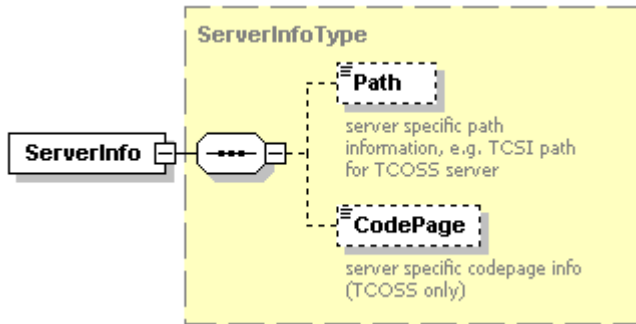
```
<Fax20 xmlns="http://www.topcall.com/2006/Fax">
  <Header>
    <Correlation></Correlation>
    <TSI></TSI>
    <Pages>0</Pages>
    <Complete>0</Complete>
  </Header>
</Fax20>
```

ConfirmFax

Acknowledge transfer of a fax from the server, or put it back into the server's responsibility.

Input:





The optional “ServerInfo” element allows to override server-specific settings which are taken from the TWS configuration if not specified.

The status may be one of “OK”, “DELAY” or “REJECT”. The DelayTimeout parameter is not supported (it may be specified but is ignored).

Output:

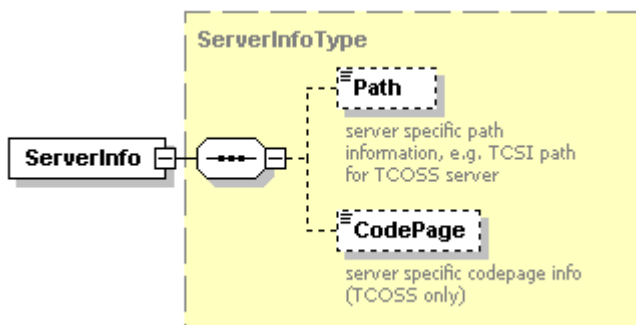
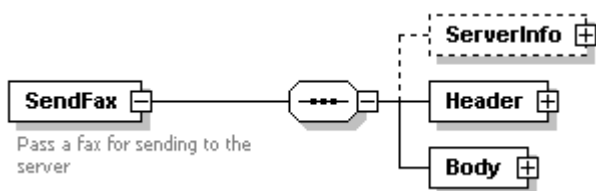
An empty “ok” element if the message is confirmed successfully (i.e. the correlation was correct and the message was still open in TCOSS), a fault otherwise.

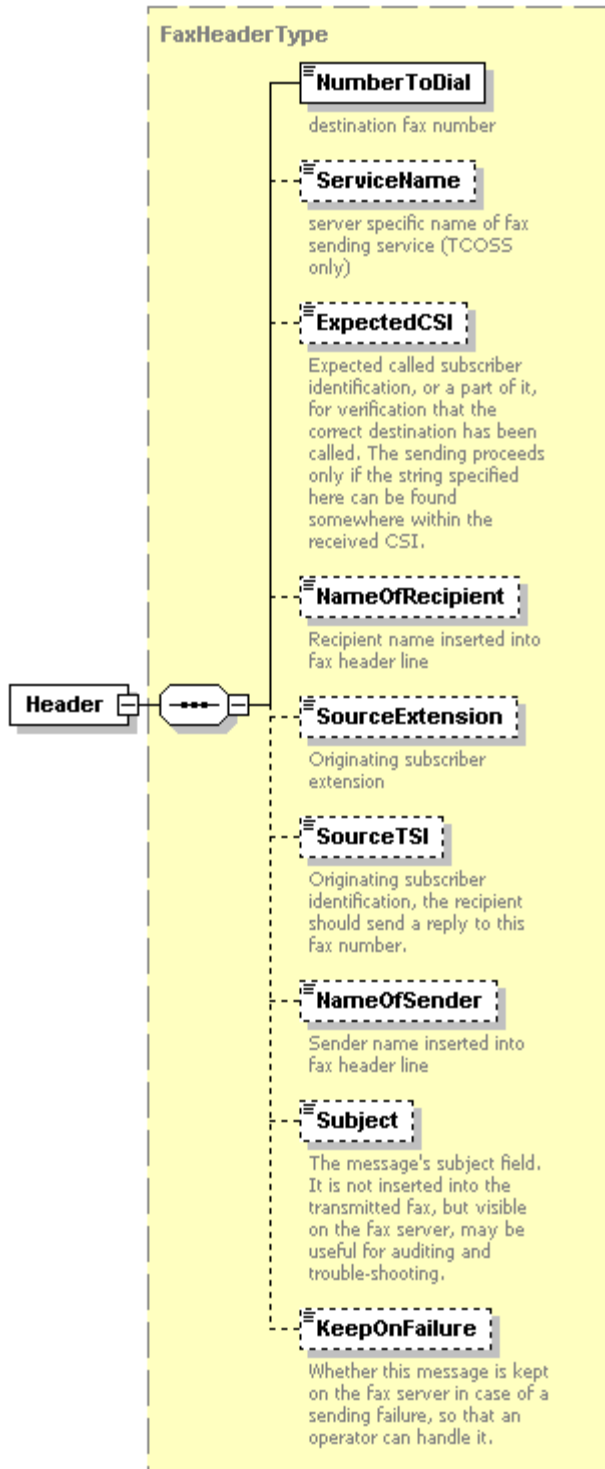
SendFax

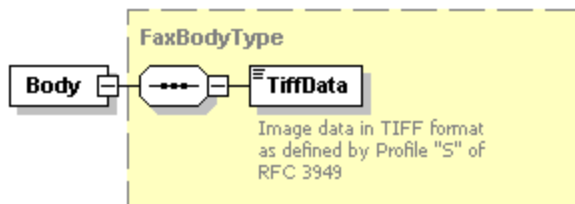
Pass a fax for sending to the server.

The optional “ServerInfo” element allows to override server-specific settings which are taken from the TWS configuration if not specified.

Input:







Output:

An empty "ok" element if the message was successfully transferred to the server, otherwise a fault.