

# Kofax TotalAgility

## Architecture Guide

Version: 7.8.0

Date: 2020-07-12

The KOFAX logo is rendered in a bold, blue, sans-serif typeface. The letters are thick and closely spaced, with a consistent weight throughout the word.

© 2020 Kofax. All rights reserved.

Kofax is a trademark of Kofax, Inc., registered in the U.S. and/or other countries. All other trademarks are the property of their respective owners. No part of this publication may be reproduced, stored, or transmitted in any form without the prior written permission of Kofax.

# Table of Contents

Preface.....	6
Related Documentation.....	6
Training.....	7
Getting help with Kofax products.....	7
Overview.....	8
Web/App tier.....	9
Server side Windows services.....	9
Database.....	9
Client side components.....	10
Real Time Transformation Service.....	11
Core Worker Service.....	13
Background System (Worker) tasks.....	14
Execution through threads in thread pools.....	14
System Thread Pool.....	14
Job Scheduling System Task.....	15
Archive Jobs System Task.....	15
Create Exceptions System Task.....	15
Create Jobs System Task.....	15
Monitoring System Task.....	15
Perform Auto Activities System Task.....	16
Process Activities System Task.....	16
Process Session Timeouts System Task.....	16
Process State Actions System Task.....	16
KM and Xerox FtpFetch System Tasks.....	16
Ingest System Task.....	17
Capture Data Clean Up System Task.....	17
Process Capture Timeouts System Task.....	17
Device Management Cleanup System Task.....	17
Evaluate Jobs System Task.....	17
Retention Policy System Task.....	17
License Monitoring System Task.....	17
Upgrade Job System Task.....	17
Auto Activity Thread Pool.....	17
Lock activities.....	18

Process Activities Thread Pool.....	18
ProcessActivityTask.....	18
Upgrade Job Thread Pool.....	18
UpgradeJobsTask.....	18
Custom Job Thread Pool.....	19
ArchiveJobTask.....	19
CreateExceptionTask.....	19
CreateJobTask.....	19
EvaluateJobTask.....	19
DeleteItemTask.....	19
CaptureBatchTask.....	19
ProcessStateActionTask.....	20
IngestSystemTask.....	20
Configuration.....	20
Adding custom thread pools to CoreWorker.....	21
Performance Counter Usage.....	21
Transformation Server.....	23
Task Retriever.....	23
Task Dispatcher.....	24
Activity Processing Logic.....	24
Transformation Process Pool.....	24
Image Processing Process Pool.....	24
Ports and protocols.....	25
Custom forms configuration.....	26
Scaling and resiliency.....	27
TotalAgility Web and Application servers.....	27
Deployment options.....	27
Scaling.....	29
Clustering.....	30
Performance and sizing best practices.....	30
Transformation Server.....	30
Deployment options.....	30
Scaling.....	30
Performance and sizing best practices.....	31
License Server.....	31
Deployment options.....	31
Import Connector.....	32
Deployment options.....	32

Scaling.....	32
Performance and scaling best practices.....	32
Reporting service.....	32
Deployment options.....	32
Scaling.....	32
Performance and scaling best practices.....	33
Docker container deployment.....	34
Business continuity.....	37
Safe scripting in TotalAgility multi-tenancy.....	39
Overview.....	39
Allowed.....	39
Not allowed.....	40
Guidelines on coding for safe scripting.....	40
Configuration.....	40
Tenant boundary.....	41
Access registry.....	41
Crash application.....	41
Stack overflow exceptions.....	41

# Preface

This guide gives you an overview of the salient points of architecture in Kofax TotalAgility, covering various deployments for an on-premise, on-premise multi-tenancy or Azure environment.

## Related Documentation

The product documentation set for Kofax TotalAgility is available at the following location.

<https://docshield.kofax.com/Portal/Products/KTA/7.8.0-dpm5ap0jk8/KTA.htm>

In addition to this guide, the documentation set includes the following items:

- *Kofax TotalAgility Prerequisites Guide*: Provides system requirements for installing TotalAgility, instructions for running the prerequisite utility, and a software checklist for various installation types.
- *Kofax TotalAgility Installation Guide*: Describes how to install and configure TotalAgility.
- *Kofax TotalAgility Integration Server Installation Guide*: Describes how to install Kofax Integration Server and integrate it with other products.
- *Kofax TotalAgility On-Premise Multi-Tenant Installation Guide*: Describes how to install and configure On- Premise Multi-Tenant system.
- *Kofax TotalAgility Configuration Utility Guide*: Explains how to use the Configuration Utility to update settings across various configuration files for different types of installation and deployment.
- *Kofax TotalAgility Administrator's Guide*: Provides information to the administrator on configuring and maintaining a TotalAgility installation.
- *Kofax TotalAgility Best Practices Guide*: Describes the best practices you must follow when using TotalAgility to improve performance, cost, maintenance, availability and security.
- *Kofax TotalAgility Features Guide*: Provides an overview of the TotalAgility features.
- *Kofax TotalAgility Migration Guide*: Provides information on TotalAgility upgrades from different versions and post upgrade configuration.
- *Kofax TotalAgility Help*: Provides details about using TotalAgility to design business jobs and cases, assign resources, create forms, integrate with external applications, and more. Access the help from the TotalAgility application by clicking the Help button.
- *Kofax TotalAgility Workspace Help*: Describes how to use the Workspace to manage activities, jobs, and resources. Access the help from the TotalAgility Workspace by clicking the Help button.
- *Kofax TotalAgility On-Premise Multi-Tenant System Help*: Describes how to create and manage tenants using the TotalAgility On-Premise Multi-Tenant system.
- *Kofax TotalAgility Web Capture Control Help* : Provides details on using a Web Capture control in creating multi-page documents, creating a new document in a new folder, deleting pages that have been incorrectly scanned, and more; also, describes the buttons available in a Web Capture control toolbar.

- *Kofax Analytics for TotalAgility Product Features Guide*: Provides an overview of the dashboards that help you track data through the workflow, analyze the effectiveness of the processes and resources, and address business problems.
- *Kofax TotalAgility Tables*: Describes the Kofax TotalAgility tables and fields used by Kofax Analytics for TotalAgility.
- *Migration From Kofax Products Guide*: Provides information about migrating TotalAgility files and Kofax Transformation Modules projects to TotalAgility.

## Training

Kofax offers both classroom and computer-based training that will help you make the most of your Kofax TotalAgility solution. Visit the Kofax website at [www.Kofax.com](http://www.Kofax.com) for complete details about the available training options and schedules.

## Getting help with Kofax products

The [Kofax Knowledge Base](#) repository contains articles that are updated on a regular basis to keep you informed about Kofax products. We encourage you to use the Knowledge Base to obtain answers to your product questions.

To access the Kofax Knowledge Base, go to the [Kofax website](#) and select **Support** on the home page.

**Note** The Kofax Knowledge Base is optimized for use with Google Chrome, Mozilla Firefox or Microsoft Edge.

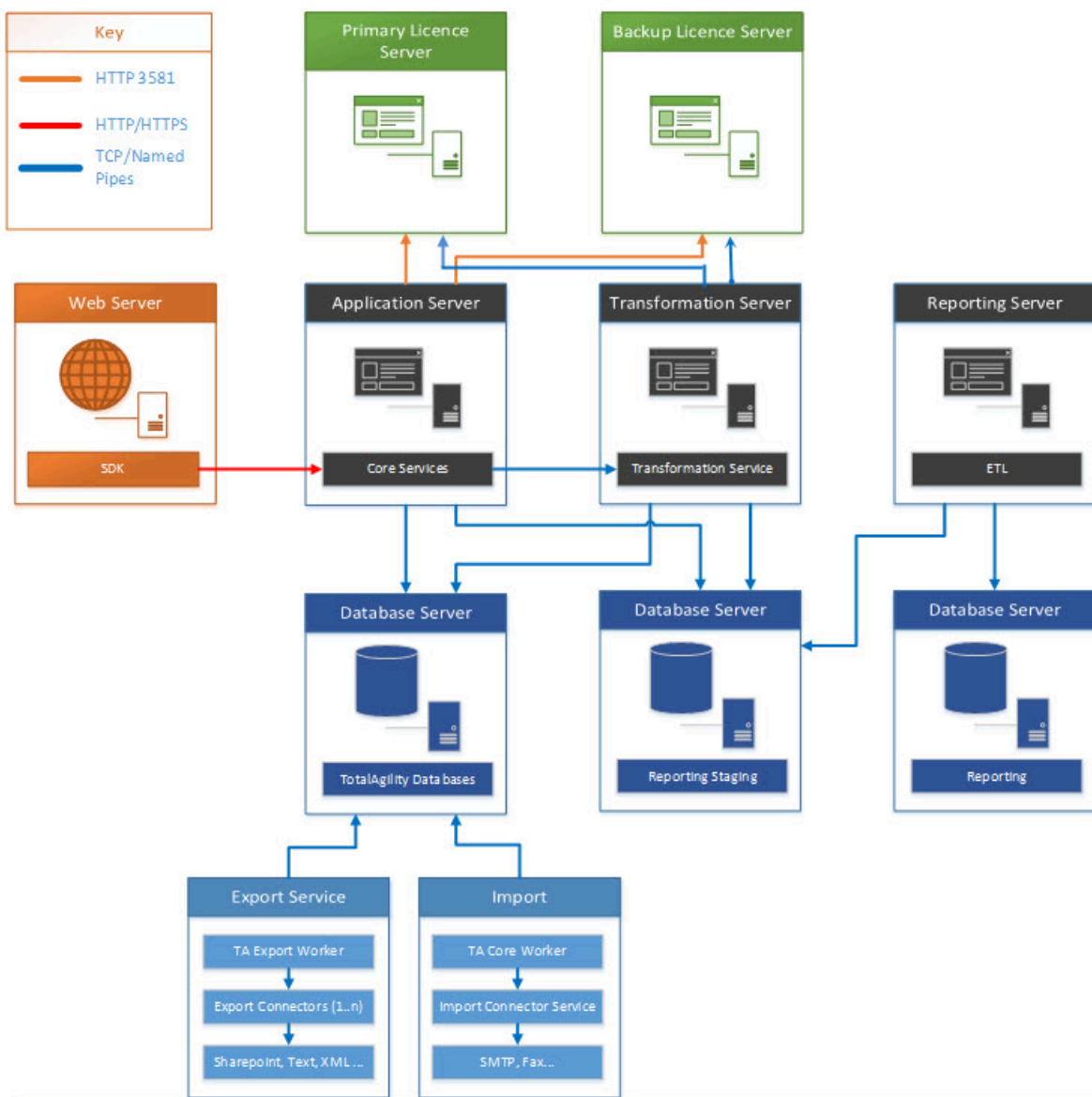
The Kofax Knowledge Base provides:

- Powerful search capabilities to help you quickly locate the information you need.  
Type your search terms or phrase into the **Search** box, and then click the search icon.
- Product information, configuration details and documentation, including release news.  
Scroll through the Kofax Knowledge Base home page to locate a product family. Then click a product family name to view a list of related articles. Please note that some product families require a valid Kofax Portal login to view related articles.
- Access to the Kofax Customer Portal (for eligible customers).  
Click the **Customer Support** link at the top of the page, and then click **Log in to the Customer Portal**.
- Access to the Kofax Partner Portal (for eligible partners).  
Click the **Partner Support** link at the top of the page, and then click **Log in to the Partner Portal**.
- Access to Kofax support commitment, lifecycle policies, electronic fulfillment details, and self-service tools.  
Scroll to the **General Support** section, click **Support Details**, and then select the appropriate tab.

# Overview

The TotalAgility installation includes the components in the Logical Architecture diagram. Many components communicate with each other as shown in the Logical Architecture diagram. For more information, see the diagrams depicting communication in [Scaling and resiliency](#).

## Logical Architecture





## Web/App tier

The web tier contains the SDK Services and provides a fully documented API set for users to call. There is no business logic contained within the SDK Services. All API calls to the SDK services are forwarded to the Core Services. The Core Services connect to the database and also contain business logic. When a combined Web/App is deployed, the Core services reside on the Web server, and the calls from the SDK Services to the Core Services occur in memory. When a split Web/App is deployed, the Core Services reside on a separate Application server (the app tier).

## Server side Windows services

The server side Windows services include:

- **CoreWorker Service:** Responsible for executing the background system tasks, such as Perform Auto Activities, Evaluate Jobs and more. See [Core Worker Service](#) for more details.
- **Transformation Service:** Polls the database for automatic capture activities to perform Image Processing, Separation, Classification, Extraction, and PDF Generation. As these operations are CPU intensive, this service must run on a dedicated server to perform its work when not running in Real Time Transformation Service mode. If running in Real Time Transformation Service mode, where it provides customers with enhanced features aimed at mobile/capture APIs, it works with in-memory documents to improve performance. See [Real Time Transformation Service](#) for more information.
- **Reporting Service:** Extracts the capture data from the Reporting Staging database, transforms it and then loads it into the Reporting Main database. This service should be run on a dedicated server as it performs CPU-intensive translation of data.
- **License Service:** Decrements user and volume license counts.
- **Streaming Service:** Used to import and export packages in the TotalAgility Designer. You must use a Windows service as IIS only supports a maximum of 2 GB for a stream. This service runs on the web server. In a split web/app, it runs on both the web tier and the app tier.
- **(Import) Message Connector:** Enables documents to be imported into TotalAgility using the configured import connectors.
- **Export Service:** Exports documents to the customer's choice of store. Once exported, the documents can be removed from the main TotalAgility database.

## Database

SQL Server is the supported database.

TotalAgility on-premise supports SQL Server authentication or Windows authentication.

TotalAgility on-premise multi-tenancy supports SQL Server authentication.

## Client side components

Kofax Web Capture Service is responsible for image processing, bar code and patch code detection, file import from disk, and image normalization.

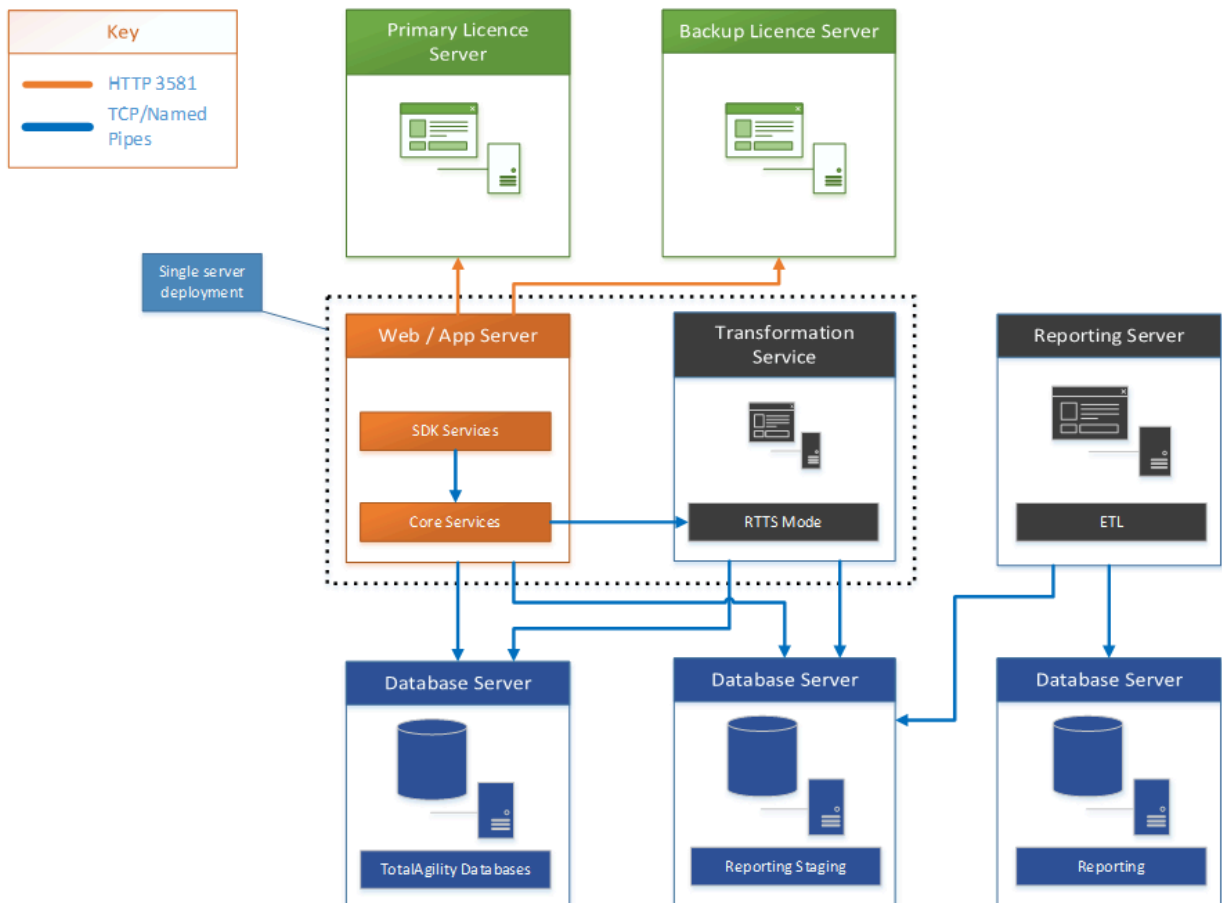
# Real Time Transformation Service

TotalAgility can be installed in a specialized configuration mode known as the Real Time Transformation Service. In this mode, TotalAgility provides synchronous classification and extraction capabilities that reduce response time and improve performance by storing and processing documents data in memory. You can persist this data into the document repository after classification and extraction.

TotalAgility supports real time transformation and optimizes performance by:

- Supporting a configuration mode in Transformation Server that does not poll for pending capture activities and is used only for synchronous processing.
- Allowing Transformation Server to preload specific Transformation projects.
- Bypassing folder and document structure validation rules.

## Real Time Transformation Service architecture



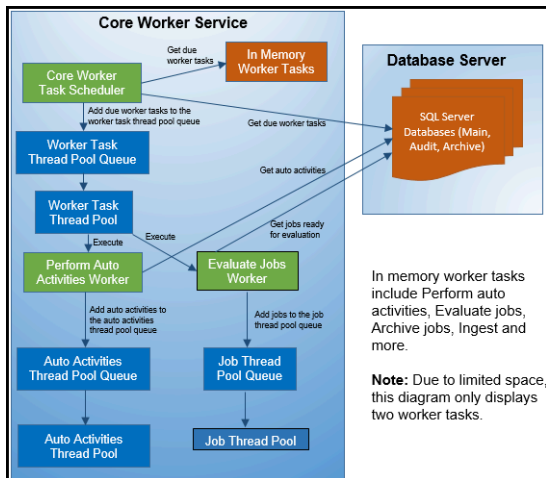
**Note** Using the SDK APIs for Real Time Transformation Service (RTTS) may work when TotalAgility is not installed in RTTS mode and Transformation Server service is installed locally. Using these APIs outside of RTTS mode is not supported.

This is because Transformation Server is typically installed remotely when not using RTTS and you will not get the improved performance of Transformation Server not polling for work and the preloading of specific Transformation projects.

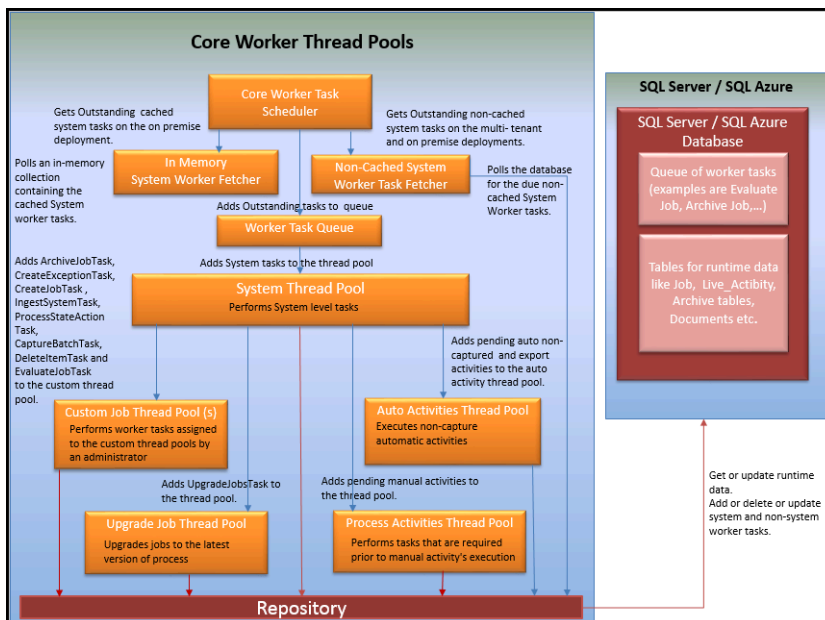
# Core Worker Service

This section describes the inner workings of the Core Worker Service as shown in the diagram.

## Core Worker Service



## Core Worker Thread Pools



## Background System (Worker) tasks

The Core Worker looks for non-capture System (Worker) tasks due for execution at preconfigured intervals. The frequency of their execution is based upon the interval, configured within the System Settings in the TotalAgility Designer.

In addition to a specific System task, some System tasks are also responsible for carrying out a non-system task. For example, the Evaluate Job System task is only responsible for evaluating jobs that are ready for evaluation, whereas the Archive Jobs System task not only archives completed jobs but also removes items that are marked for deletion by the Retention Policy System task.

## Execution through threads in thread pools

TotalAgility system tasks are performed on multiple threads. These threads are managed through TotalAgility thread pools. Every thread pool is responsible for performing designated work. For each System task due, a corresponding entry is added to the process Worker Task Thread Pool Queue. When a thread in the process Worker Task thread pool becomes available, the item at the head of the queue is removed and allocated to the available thread. This thread then performs the (due) System Worker task. Once the System Worker task is completed, the thread becomes available again.

For example, the thread might perform the Auto Activities Worker task. This worker task looks for automatic activities to perform. For each automatic activity found, an entry is added to the Auto Activities Thread Pool Queue. When a thread in the Auto Activities Thread Pool becomes available, the item at the head of the queue is removed and allocated to the available thread. This thread will perform the automatic activity.

Once the automatic activity is completed, the thread becomes available again. Essentially these automatic activities are executed asynchronously through threads in the Auto Activities Thread Pool.

Non-System tasks are also executed asynchronously through thread pools, in a similar fashion to the automatic activities described above. In this example, both the jobs to be archived and the retention policy items to be deleted are serviced by the Job thread pool.

## System Thread Pool

The system thread pool performs the core system level worker tasks. This section describes the different System (Worker) task types.

- In-memory / cached System Worker tasks

The Core Worker polls an in-memory collection containing the cached System worker tasks to identify which ones are due. When the Core Worker is scaled out horizontally across multiple servers, the in-

memory Worker tasks can run concurrently. For example, the Auto Activities Worker task can run on both servers simultaneously.

The in-memory system tasks include:

- Perform Auto Activities
- Evaluate Jobs
- Archive Jobs
- Ingest
- Create Exceptions
- Create Jobs
- Process Activities
- Process State Actions
- Non-Cached System Worker tasks

The Core Worker polls the database for the non-cached System Worker tasks to identify which ones are due. These types of System Worker tasks cannot execute concurrently across multiple servers.

Example: Monitoring and Job scheduling.

## Job Scheduling System Task

The job scheduling system task does the following:

- Create jobs for an active schedule when configured due date is reached.
- Deletes schedules based on execution criteria. For example, when configured end date is passed or specified number of jobs are created.
- Reactivates the jobs that are on hold.

## Archive Jobs System Task

The archive jobs system task does the following:

- Adds non system worker tasks of type "ArchiveJobTask" to the custom thread pool to archive jobs.
- Adds non system worker tasks of type "DeleteItemTask" to the custom thread pool to delete items such as jobs, documents, processes and so on.

## Create Exceptions System Task

This system task adds non system worker tasks of type "CreateExceptionTask" to the custom thread pool to create exception jobs.

## Create Jobs System Task

This system task adds non system worker tasks of type "CreateJobTask" to the custom thread pool to create custom jobs.

## Monitoring System Task

This system task does the following:

- Monitors overrun activities and jobs.

- Monitors overdue activities, jobs, document types and milestones.
- Monitors underutilized resources.
- Monitors document storage limits in the azure environment.
- Raises below exceptions when monitored entities are failed on expected criteria.

Code	Name
EXP0001	Resource inactive
EXP0013	Activity Overdue
EXP0006	Activity Overrun
EXP0004	Job Cost Overrun
EXP0005	Job Overrun Duration
EXP0030	Milestone Overdue
EXP0031	Job Budget Overrun
EXP0033	Job Overdue
Not defined	Storage Limit
EXP0037	Document Type Overdue

- Updates last monitoring run time.

## Perform Auto Activities System Task

This system task does the following:

- Locks specified number of non-capture automatic activities.
- Adds the auto activities to the thread pool for processing.
- Resets timed out non-capture activities.

## Process Activities System Task

This system task adds non system worker tasks of type "ProcessActivityTask" for each manual activity to the process activity thread pool.

## Process Session Timeouts System Task

This system task logs off the users when session's last access time crosses session timeout interval defined at system level.

## Process State Actions System Task

This system task adds non system worker tasks of type "ProcessStateActionTask" to the custom thread pool to execute state actions.

## KM and Xerox FtpFetch System Tasks

This system task is responsible for fetching MFP files.



## Ingest System Task

This system task adds system worker tasks of type "IngestSystemTask" to the custom thread pool to import messages from connectors.

## Capture Data Clean Up System Task

This system task adds itself to the custom thread pool to clean-up outstanding capture data marked for removal, by deleting documents or folders.

## Process Capture Timeouts System Task

This system task adds non system worker tasks of type "CaptureBatchTask" to the custom thread pool to check batch timeout for each capture batch.

## Device Management Cleanup System Task

This system task performs KFS system clean-up on non-integration server deployments.

## Evaluate Jobs System Task

This system task adds non system worker tasks of type "EvaluateJobTask" to the custom thread pool to evaluate job.

## Retention Policy System Task

This system task adds non system worker tasks of type "DeleteItem" to the custom thread pool to check batch timeout for each capture batch.

## License Monitoring System Task

This system task is responsible for checking the current usage for each license type and raising EXP0035 on over usage.

## Upgrade Job System Task

This system task adds non system worker tasks of type "UpgradeJobsTask" to the upgrade job thread pool.

## Auto Activity Thread Pool

This executes non-capture automatic and export activities.

**Note** The Export activities are executed by the Export service but not the Core Worker service.

## Lock activities

By default, the CoreWorker service locks activities for processing in the order of activity due date and priority. However, you can change the default order by updating the CoreWorkerActivityOrder app key in the CoreWorker's config file.

If an order of job priority and then job's expected finish time is selected, add the following index in the TotalAgility main database.

```
CREATE NONCLUSTERED INDEX [IDX_JOB_PRIORITY] ON [DBO].[JOB]
(
    [PRIORITY] ASC,
    [EXPECTED_FINISH_TIME] ASC)
INCLUDE ([JOB_ID])
```

This improves performance.

**Note** The same .config file settings applies to the Transformation Server service also.

## Process Activities Thread Pool

The process activities thread pool performs tasks that are required before execution of manual activities.

### ProcessActivityTask

- Executes SignDoc activity
- Executes KCM (Kofax Communication Manager) Compose and KCM Distribute activities
- Sends activity notifications
- Raises exceptions for invalid usable resources or when resources are not assigned to the activity.
- Performs manual work allocation based on the allocation algorithm selected at server level.

## Upgrade Job Thread Pool

Upgrade jobs to the latest version of the process.

### UpgradeJobsTask

Upgrades the job.

## Custom Job Thread Pool

The administrator can add custom Job thread pools and set the number of threads in it and the worker tasks that it may perform. This helps in achieving better throughput and prioritizing the background tasks. Following are the non-system tasks performed by custom job thread pool.

### ArchiveJobTask

This moves the completed and terminated job from live database to the archive database when the server setting ArchiveFinishedJob is on.

### CreateExceptionTask

This creates a job on the server and process level exception maps.

### CreateJobTask

This creates job for the alert tasks.

### EvaluateJobTask

- Evaluate newly created job.
- Retry evaluation on evaluation failure during activity completion or job creation.

### DeleteItemTask

Responsible for deleting below items as per retention policy.

- Job
- Form
- Process
- Skin
- Business Rule
- Classification Group
- Extraction Group
- Internal and External user
- Audit log
- Document
- KCM Pack

### CaptureBatchTask

Responsible for unloading timed out batches for capture processing.

## ProcessStateActionTask

This task is responsible for executing state actions as described below.

- For state action of type job, it is responsible for creating jobs on the associated business process or case or case fragment maps.
- For state action of type event, it is responsible for executing associated business event. Also, if alert task is associated with the event then creates jobs on the alert task.

## IngestSystemTask

This system task is responsible for importing documents from import message connector.

## Configuration

You can optimize the system for specific workloads by configuring settings, such as the number of threads in a thread pool or the queue size for a thread pool. We recommend that you keep the default configuration settings; however, you can change them based on the customer's requirements. Changing a single configuration setting may not have the desired effect because many of the configuration settings are coupled.

For example, the following settings relate to the processing of automatic activities:

- **Thread Pool size for Automatic Activities:** The number of threads in a thread pool, that is, the maximum number of concurrent automatic activities.

For TotalAgility On-Premise, you can set the thread pool size for automatic activities in the **Automatic Activity** setting available at **System > System settings > System > Thread pools** in the TotalAgility Designer.

For TotalAgility On-Premise Multi-Tenant and TotalAgility in Azure environment, it is not possible to configure thread pools in the TotalAgility Designer, as they are not tenant specific.

For these environments, you can set the thread pool size for automatic activities in the **AutoActivitiesThreadPoolSize** setting available in **Agility.Server.Core.WorkerService.exe.config**.

- **CoreWorkerMaxAutoActivityThreadPoolSize:** The maximum number of automatic activities queued to be serviced by the thread pool.
- **System task interval for Perform Auto Activities:** The frequency at which the Core Worker polls the database for automatic activities.
- **MaximumNumberOfActivitiesToLock:** The number of automatic activities to look for when executing the Auto Activities Worker, and subsequently pass to the Auto Activities Thread Pool to perform.

Other settings include:

- **CoreWorkerIntervallInSeconds:** Dictates how frequently the Core Worker polls for due in-memory System tasks.
- **CoreWorkerDBIntervallInSeconds:** Dictates how frequently the Core Worker polls the database for System tasks that are due.
- **CoreWorkerWorkQueueSize:** Specifies how many System tasks are requested each time Core Worker polls the database.

**Example**

Consider increasing the **MaximumNumberOfActivitiesToLock** parameter from 16 (default) to 50. It may result in higher throughput of activities processed; however, if the Core Worker is not processing automatic activities quickly, the thread pool queue may simply reach its limit (default: 100). In this case, the number of activities entering the thread pool queue increases in size, but the number of activities being serviced by the thread pool remains the same. To remediate the issue, consider increasing the thread pool size and **CoreWorkerMaxAutoActivityThreadPoolSize** accordingly.

## Adding custom thread pools to CoreWorker

You can specify new thread pools under "CoreWorker" in the "Agility.Server.Core.WorkerService.exe.config" file as follows:

```
<CoreWorker>
  <JobThreadPools>
    <add Id ="1" Size ="10" WorkerTasks ="ArchiveJobTask, CreateExceptionTask"/>
    <add Id ="2" Size ="10" WorkerTasks ="ImportSystemTask"/>
    <add Id ="3" Size ="10" WorkerTasks ="EvaluateJobsTask"/>
    <add Id ="4" Size ="10" WorkerTasks ="ProcessStateActionsTask"/>
  </JobThreadPools>
</CoreWorker>
```

In the above example, four thread pools are added, where each thread pool containing ten threads. The IDs must be unique. The list of worker task is passed as comma separated values. Thus, the first thread pool can only archive jobs and raise exceptions. The second thread pool will be responsible for ingesting documents in TotalAgility. The third evaluates jobs and ingests documents through FTP. The fourth is responsible for processing state actions.

A worker task cannot be assigned to more than one thread pool. If assigned, the Core Worker detects and logs the error and prevent startup. The Core Worker also ensures that all the possible worker tasks are assigned to some thread pool. If a task is missed, Core Worker logs an error and prevents startup.

By default, a clean installation of Kofax TotalAgility will have a custom job thread pool setup to cater for all worker tasks and the number of threads in the default pool being 4. On upgrade, the number of threads will be set to the job thread pool size that was set in the Designer.

By default, a clean installation of Kofax TotalAgility will have custom job thread pools setup to cater for all non-system worker tasks. If custom thread pools were set manually or through the configuration utility in a previous version, the same will be available on upgrade. See "Add custom job thread pools" in *Kofax TotalAgility Installation Guide* for more information.

## Performance Counter Usage

The Performance Counters are used to record application states and activities. Many are already included as part of the Windows operating system, and additional counters may be created programmatically. Counters are written and placed in an application where specific measurements need to be made, such as rate of throughput, count of items and others. Once the counters are installed on a target system, an application can write values to them. These values can then be read in real-time using the Windows Performance Monitor, a Microsoft Management Console (MMC) snap-in. TotalAgility has a number of Performance Counters; the placement of these within the application are used to measure Key Performance Indicators (KPIs) of a number of critical services.

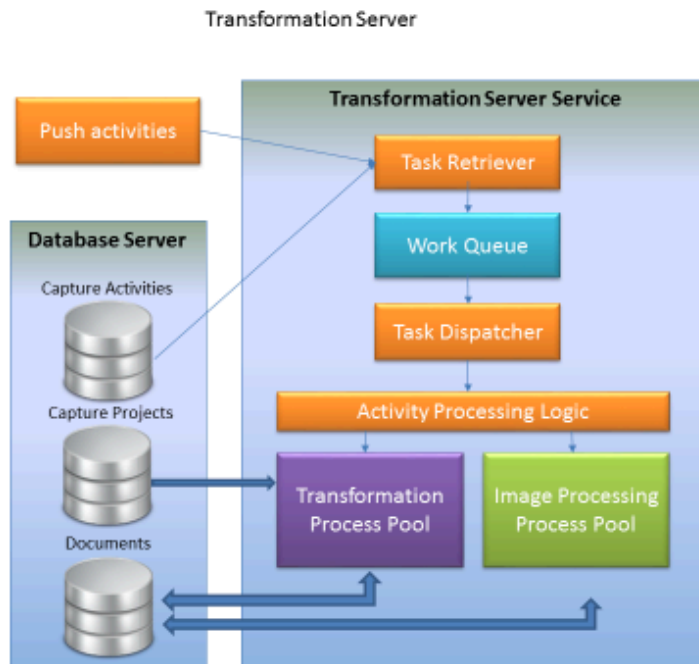
For more information on TotalAgility Performance Counters, see the following guides:

- [Kofax TotalAgility Administrator's Guide](#)
- [Kofax TotalAgility Installation Guide](#)
- [Kofax TotalAgility On-Premise Multi-Tenant Installation Guide](#)

# Transformation Server

This section describes the inner workings of the Transformation Server as shown in the diagram.

## Transformation Server



## Task Retriever

Fetches the capture work either from the database or directly across WCF calls from the TotalAgility Core Worker Service (known as Push activities). Work coming over the WCF channel is of high priority and is placed at the head of the work queue to be processed when resources are available. Processing resources can be reserved for these high priority activities to make sure there is no delay in processing them. The Task Retriever polls the database for more work when it anticipates that resources may be available for more processing.

## Task Dispatcher

Maximizes the use of processing power on the server. The task dispatcher tries to consume all the server resources to maximize throughput unless it is configured to limit the number of documents that may be processed at the same time.

## Activity Processing Logic

Handles the high level logic involved in Image Processing, Separation, Classification, Extraction, Validation, and PDF Generation.

## Transformation Process Pool

Includes processes that perform Separation, Classification, Extraction, and PDF Generation using the same core transformation modules as the Kofax Transformation product.

## Image Processing Process Pool

Includes processes that handle image processing tasks which use eVRS, AtalaSoft, and other libraries to perform image conversion, image processing, scaling, bar code detection and separation, patch sheet detection and separation, and others.



# Ports and protocols

Refer to the following table for ports and protocols used in the internal components. Also refer to the Logical Architecture diagram in [Overview](#).

From	To	Protocol	Port
User	Web Tier	HTTP / HTTPS	80 /443
Web Tier	App Tier	HTTP / HTTPS	80 / 443
Core Services in the App Tier / Core Worker Service / Transformation Server / Reporting Service / Analytics	Database	Named Pipes / TCP	1433
Core Services in the App Tier / Core Worker Service / TS / Reporting Service	License Server	HTTP	3581
License Proxy	License Server	HTTP / HTTPS	80 /443
Core Services in the App Tier / Core Worker Service	Transformation Server	TCP	9001
App Tier	TRIM / SP / Dynamics CRM / Dynamic AX	HTTP / HTTPS	80 /443
App Tier	MS Exchange	TCP	25

# Custom forms configuration

You can seamlessly extend your forms-based solution using custom code where necessary using the following two options.

1. Use the Custom Pages and Images features in the Form Designer section of TotalAgility to upload custom HTML/JS and Image files for use in any TotalAgility forms site.

This is the recommended approach as these pages and images are retained on upgrading TotalAgility.

2. Copy all custom pages to the following location:

```
<TotalAgility Installation>\TotalAgility\Forms\<sitename>
```

If you use a TotalAgility site, create a subfolder in this folder with the same name as the site and place all custom pages in this subfolder.

**Note** With this approach, ensure that you back up the files before upgrading TotalAgility and then copy over again after upgrade.

We recommend that you create custom forms only when the functionality required is not achievable within the Form Designer, or when the form logic becomes too complex to maintain.

# Scaling and resiliency

This section describes the deployment options and technologies available in TotalAgility to scale the installation to meet high performance workloads and become resilient to interruptions and outages.

TotalAgility is a suite of stateless WCF.NET services. The architecture lets you scale your environment using standard load balancing technologies. These technologies include application clustering with MSC (Windows server 2008 server families) or WSFC (Windows 2012 server family), Application Routing Request (ARR), Network Load Balancing (NLB) and other load balancing hardware and software. TotalAgility allows each engine request to be serviced by any node in the farm that the load balancing software and hardware select. The state is maintained in a relational database, which you can scale further.

The web-based, mobile and MFP clients communicate with TotalAgility through TotalAgility Web server using HTTP/HTTPS protocols.

We recommend that you install each server component onto a separate box with the possible exception of the Kofax TotalAgility Web server and TotalAgility Application server that may be installed together.

TotalAgility Web server, TotalAgility Application server and Transformation Server can be scaled horizontally. You can improve throughput of your installation by using several instances of these services.

TotalAgility Web server is an IIS-based web application that can easily scale using standard load balancing technologies. These technologies include WLBS, NLB, Application server and other load balancing hardware and software. If you plan to install TotalAgility Web and Application servers separately, you also need to load balance traffic from the Kofax TotalAgility Web server to the TotalAgility Application server.

## TotalAgility Web and Application servers

### Deployment options

TotalAgility supports the following installation modes:

- **Combined Web and Application Server:** Installs the Web and Application servers on a single computer.
- **Web Server only:** TotalAgility Designer web pages, TotalAgility Workspace forms and SDK services.
- **Application Server only:** Core services

The TotalAgility Web server and the TotalAgility Application server may be installed on the same computer or separately.

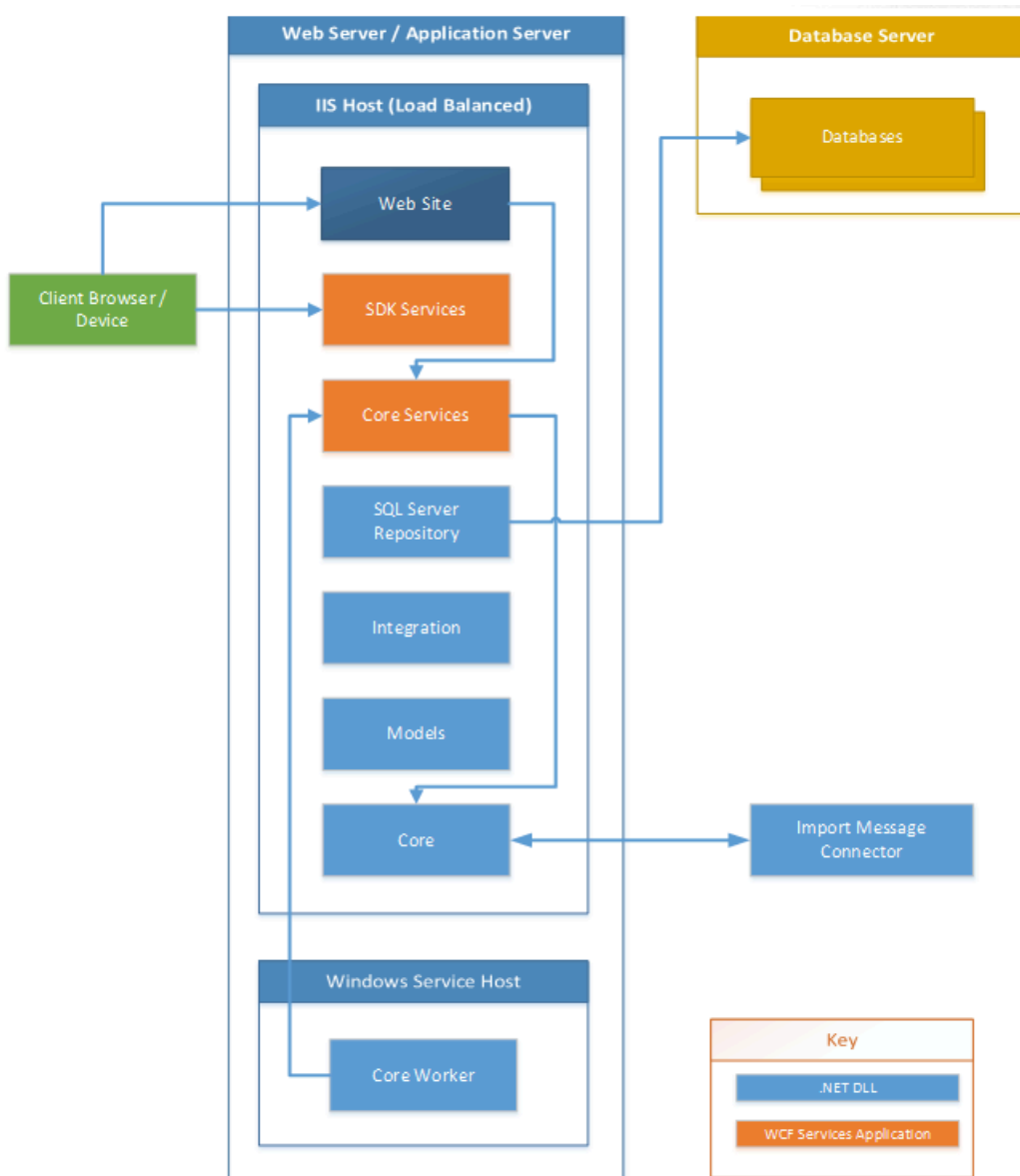
Install the TotalAgility Web server and the TotalAgility Application server on separate boxes if you have a need to exclude the possibility of accessing your enterprise internal network services (for example,

databases and mail servers) from a web server, or if you want to be able to scale the TotalAgility Web server and the TotalAgility Application Server separately.

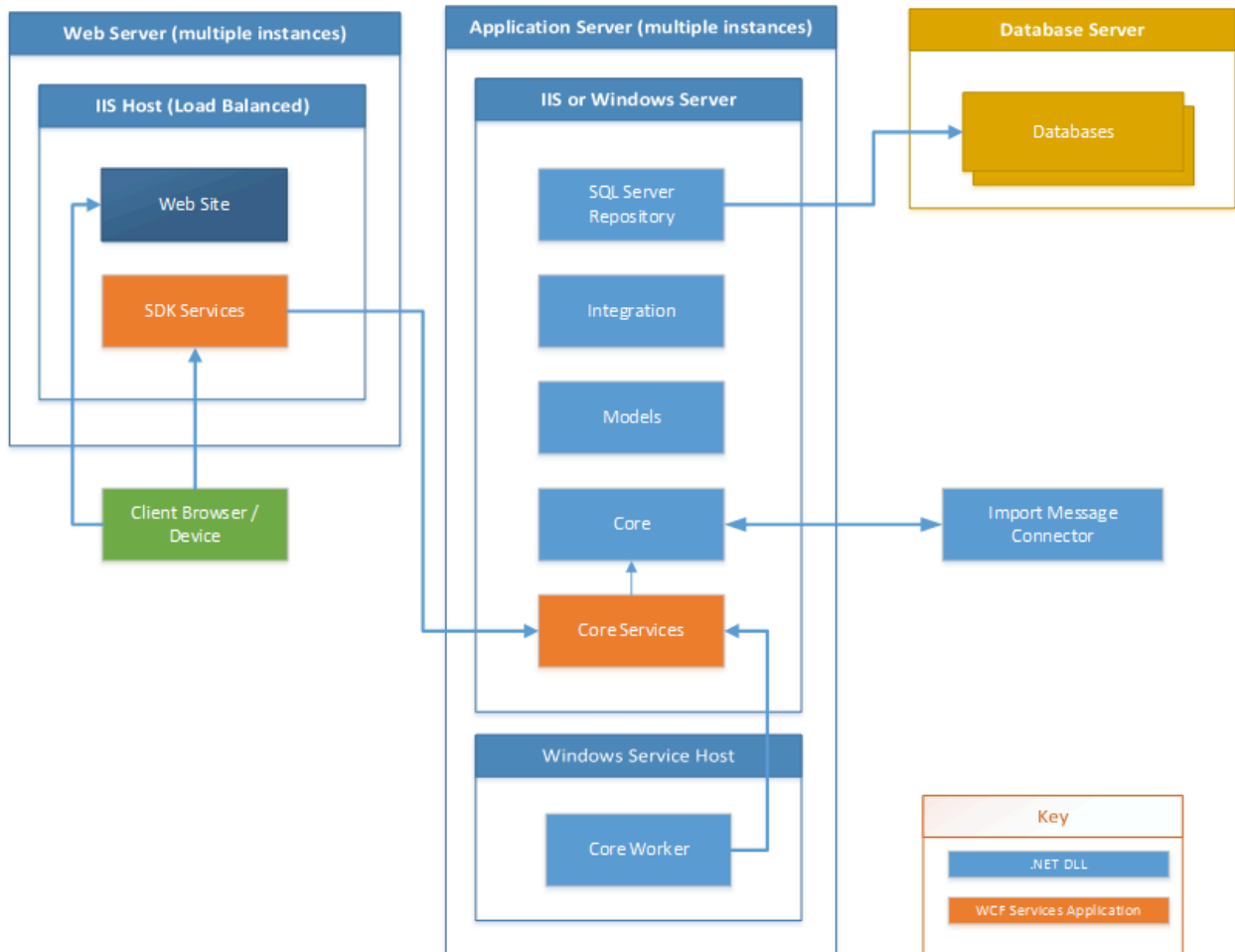
Although separating the TotalAgility Web and the TotalAgility Application servers makes the installation more secure against Web attacks, having them installed on the same computer may result in better overall system performance.

See the diagrams below for combined Web App, and separate Web and Application servers.

**Combined Web App Server**



### Separate Web App Server



### Scaling

TotalAgility Web server is an IIS-based web application that can easily scale using standard load balancing technologies such as WLBS, NLB, Application server and other load balancing hardware and software. If you plan to install TotalAgility Web and Application servers separately, you also need to load balance traffic from the TotalAgility Web server to the TotalAgility Application server.

You can scale the TotalAgility Web and TotalAgility Application servers vertically (installing them on computers with more powerful hardware configurations, such as more RAM and more CPU cores) or horizontally (installing additional instances of TotalAgility Web and/or TotalAgility Application server service instances).

The TotalAgility Core Worker service on the Application server periodically polls the TotalAgility database for pending system tasks. Some examples of these system tasks are Perform Automatic Activities, Monitoring and Job Archiving.

When the system does a high volume of background processing, we recommend that you scale out the TotalAgility Application servers. Each Application server will have a separate Core Worker service instance. Each instance performs a share of the pending system tasks, thereby improving overall system throughput.

## Clustering

Web servers can be hosted within a single or multiple NLB clusters, where all nodes are active at any one time, awaiting requests from the clients. NLB will route requests to the next available node (same IP address) within the respective cluster.

Use MSC (Windows server 2003 or 2008 server families) or WSFC (Windows 2012 server family) for the application server clustering where only one node is active at any one time. High availability is obtained through the creation of multiple MSC\WSFC clusters (each with its own IP address). The application cluster is scalable in that extra nodes can be added (for MSC up to eight nodes and for WSFC up to sixteen nodes).

## Performance and sizing best practices

Many factors may influence the number of TotalAgility Web/Application servers that you should install:

- Hardware configuration (number of CPUs, RAM, IO and network throughput).
- Expected number of running jobs and complexity of TotalAgility processes.
- Expected load with background processing (unattended activities, system tasks, and more) that the TotalAgility Application Server should be running.
- Number of concurrent capture and non-capture user sessions (including mobile and MFP sessions).

We recommend monitoring the average CPU load for your TotalAgility Web and TotalAgility Application services. If the loads are higher than 70% for extended periods, you may need to deploy additional services. Otherwise, there may be performance degradation on peak loads.

## Transformation Server

### Deployment options

For better performance, the Transformation Server service should always be installed on a separate computer from other Kofax TotalAgility services.

### Scaling

To improve transformation throughput you can install multiple instances of the Transformation Server service, each on a separate computer.

## Performance and sizing best practices

Many factors may have an influence on how many Transformation Server instances need to be installed:

- The hardware configuration of the computer where the Transformation Server is being installed (number of CPUs, RAM, IO, and network throughput).
- Number of extraction groups and document types you have defined.
- Number of documents you plan to process hourly.
- Complexity of your document types in terms of the number of pages, number of fields, recognition rules, and so forth.
- Whether you want to use synchronous Transformation Server activity or fuzzy search queries.
- Whether you plan to use the Online Learning feature.
- Whether you configure a process to use Trainable Document Separation.
- Whether the classification is configured to use layout or content classification (the latter requiring OCR, which consumes time).

If you plan to configure several Transformation Server pools, the throughput of every pool should be calculated to determine the number of servers in it.

## License Server

### Deployment options

TotalAgility uses a license server to manage all licensing requests. Your Kofax serial number and product code are locked to the computer.

**Note** If installing a separate License Server on Windows Server 2012 R2 x64, you must have Microsoft .NET Framework 3.5.

TotalAgility supports one primary and one backup license server, and each license server needs its own activation code and license configuration.

**Note** The volume usage in the backup license servers can be very low (there only needs to be enough volume to last until the primary license server is restored).

If the primary license server fails, the system automatically switches to the backup license server.

The system can use the backup license server until it runs out of volume. When the primary license server is restored, TotalAgility automatically resumes using it.

## Import Connector

### Deployment options

The Import Message Connector is installed as part of the Application server. We recommend that you configure dedicated servers with the Import Message Connector when processing content in the production environments.

### Scaling

As ingestion workload grows additional Application servers can be installed and their corresponding Import Message Connectors configured to accommodate the increase in workload.

### Performance and scaling best practices

We recommend that you monitor the average CPU load for your Application server running the Import Message Connector. When CPU utilization is sustains 70% for extended periods, you may need to deploy additional Application servers.

## Reporting service

The Reporting service is automatically installed with other Application server services. The Reporting service should be installed and run on its own dedicated server.

### Deployment options

TotalAgility services require several Microsoft SQL Server databases:

- TotalAgility databases (such as main and archive)
- TotalAgility Document Repository database
- Kofax Reporting Staging database
- Kofax Reporting Main database

This list does not include databases installed by Kofax Analytics for TotalAgility.

TotalAgility does not support databases where the default collation of the server instance is case sensitive.

When the default collation is case sensitive, we recommend creating a new instance, ensuring the default collation of this instance is case insensitive. (for example, SQL\_Latin1\_General\_CP1\_CI\_AS).

### Scaling

TotalAgility supports database scaling technologies available to SQL Server such as Always-On, Active-Active, or Active-Passive deployment of database instances, and scaling via increased hardware resources.



## Performance and scaling best practices

You may require high storage volume for the Reporting and Document Repository. You can create these databases on separate SQL server installations, from each other, and from TotalAgility databases, to lower the load on the SQL server hosting the TotalAgility databases.

# Docker container deployment

You can deploy TotalAgility as Docker Windows containers instead of deploying directly onto Windows servers.

This avoids the need to use the Kofax TotalAgility installation program directly; instead it is invoked automatically while building a Kofax TotalAgility container image. All the prerequisites of Kofax TotalAgility are pre-installed on the container, this makes the deployment faster and easier.

A Docker host server can host multiple Kofax TotalAgility container types. These containers share the kernel with the host operating system and use fewer resources than a virtual machine.

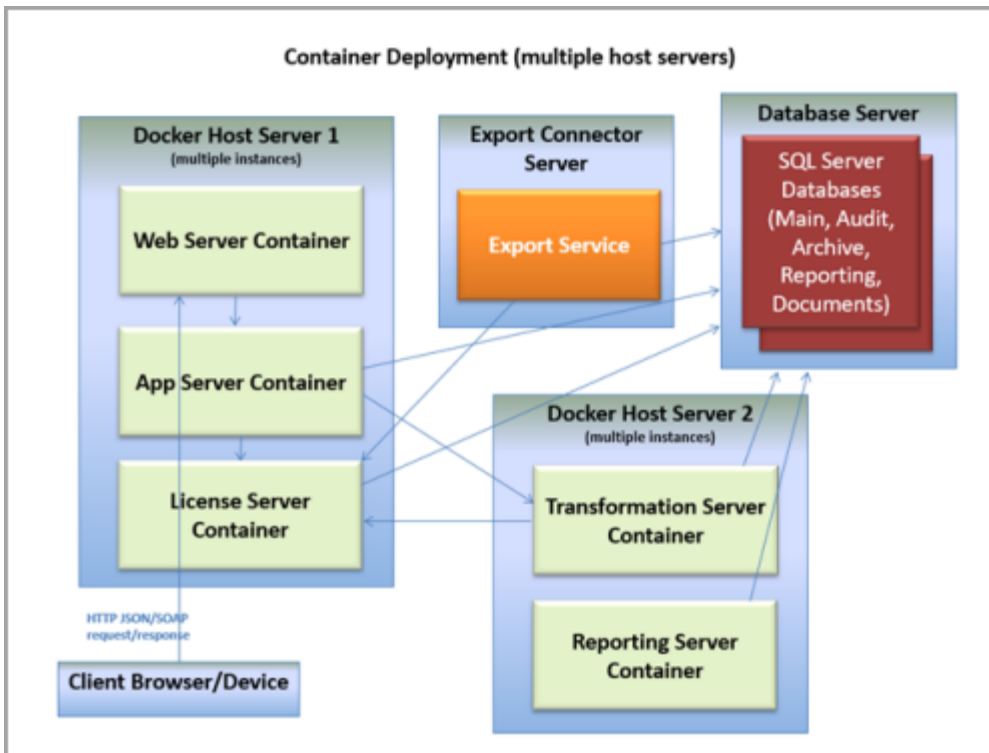
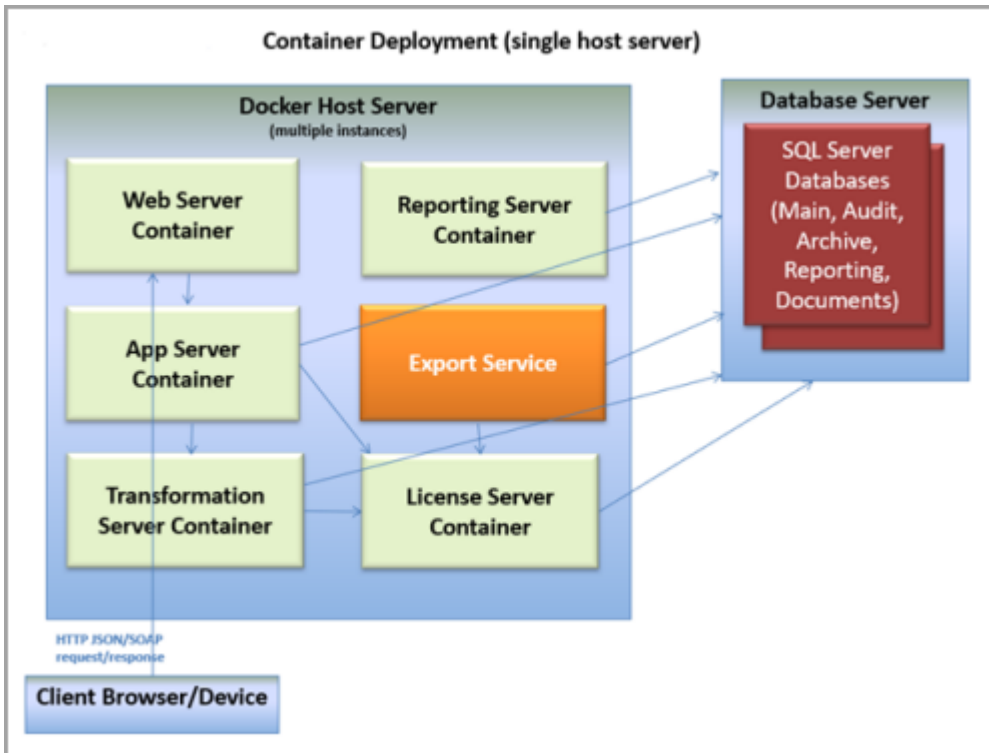
The container settings (including database connection strings) are passed at runtime through a Docker environment variables file.

You can use multiple Docker host servers to host a mix of different Kofax TotalAgility container types.

In addition, you can use a container orchestrator/clustering technology, such as Docker Compose, Docker Swarm and Kubernetes, to manage Kofax TotalAgility containers.

**Note** The Export service cannot run inside a container and must be run directly on a host server, because the export connectors have multiple dependencies which are not available in the container.

The following are some of the possible deployment configurations.



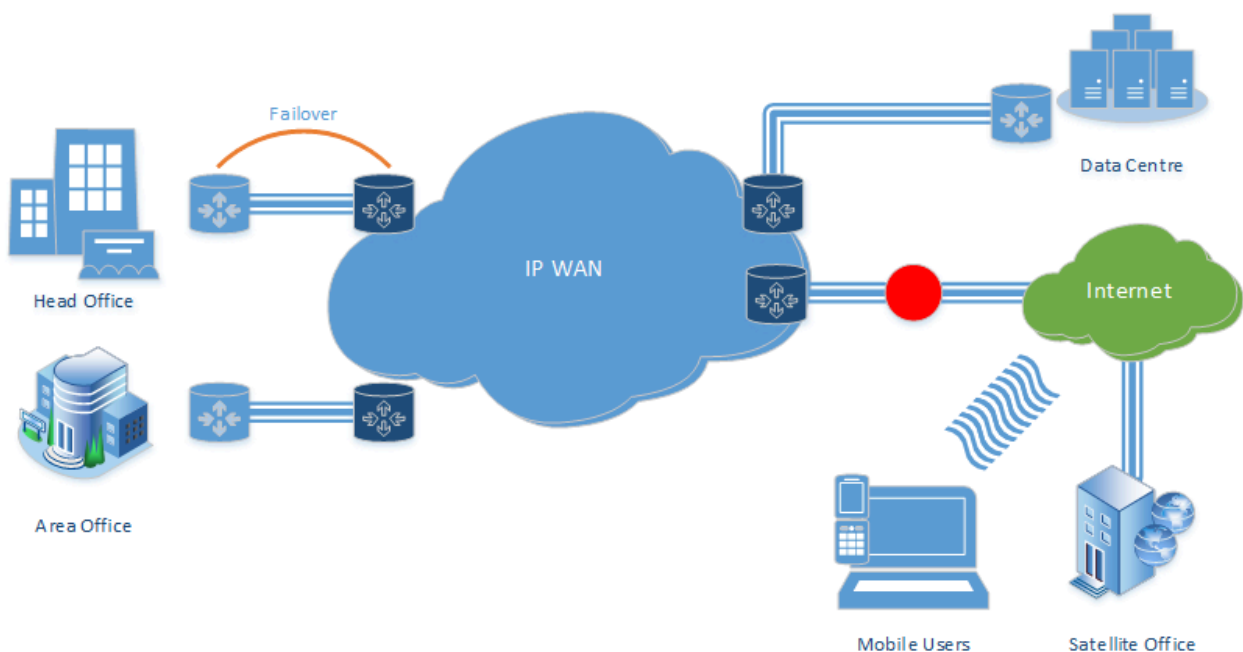
For more information about building and running Kofax TotalAgility Docker containers, refer the Kofax TotalAgility installation guide.

# Business continuity

In TotalAgility, business continuity means implementing a Disaster Recovery (DR) system as part of, or in lieu of, a fault tolerance or High Availability strategy.

Usually, many DR options are temporary, and many DR infrastructures do not have built-in redundancy, powerful hardware or fast network connections. In such scenarios, to resume normal production level, we recommend that you develop or augment an existing DR plan after deployment of a new TotalAgility system, specifically if you have a vertically and/or horizontally scaled-out system. See the sample WAN topology diagram.

## WAN topology



**Note** DR is concerned with total system failure and its subsequent reinstatement; it is not concerned with failover to a node.

Typically, most customers view DR as an overly expensive, relatively redundant system until they really need it. You can consider one of the following approaches:

- Hot DR, which is fully automated.
- Warm DR with partial automation but still requiring a degree of manual intervention.
- Manual DR where every step requires human intervention.

You must perform the DR testing on a regular basis and must factor it into your DR plan.

In TotalAgility, the following factors influence your DR plan:

- On-premise or hosted, or a combination of both
- Physical hardware or virtualization, or a hybrid of both
- Deployment topology
- Licensing costs
- Regulatory and/or business compliance
- Database deployment

Some businesses outsource disaster recovery to a managed service provider or cloud hosting company, as they cannot make the investment in location diversity for disaster preparedness, or do not have experienced IT staff (or no IT staff). Virtualization is often the de facto choice as shown in the preceding diagram.

As TotalAgility is a stateless based application, the database is a key component. For an on-premise SQL Server, the following options are currently available.

- **AlwaysOn Failover Cluster Instances:** This option leverages the Windows Server Failover Clustering (WSFC) functionality to provide local high availability through redundancy at the server-instance level.
- **AlwaysOn Availability Groups:** This option is an enterprise-level, high-availability and disaster recovery solution, introduced in SQL Server 2012. Use this feature to maximize availability for one or more user databases. To use this option, the SQL Server instances must reside on Windows Server Failover Clustering (WSFC) nodes.
- **Database Mirroring:** Creates and maintains redundant copies of a database to ensure continuous data availability and minimize or avoid downtime. The future version of Microsoft SQL Server will not support database mirroring.

The following are the only two caveats for disaster recovery (Hot or Cold) with TotalAgility:

1. The License Server cannot be load balanced or horizontally scaled. You must have a backup license server.
2. If the DR encompasses AlwaysOn and horizontally scaled databases, no two TotalAgility databases can be within the same group. This is not a TotalAgility restriction, but a Microsoft SQL Server restriction.

# Safe scripting in TotalAgility multi-tenancy

## Overview

TotalAgility has inherent support for multi-tenancy and ensures that tenant's data is isolated and cannot be accessed in any way by another tenant. TotalAgility can also safeguard itself from malicious code or unhandled exceptions in tenant's scripts or assemblies without affecting the execution of other tenant's assemblies. TotalAgility implements code access security (CAS) to protect tenants from fatal security issues.

Code Access Security (CAS) is a security technology developed by Microsoft to provide the ability to protect system resources when a .NET assembly is executed. System resources can be local files, files on a remote file system, registry keys, databases, printers, and others. Unfettered access to these types of resources can lead to potential security risks, as malicious code can perform damaging operations on them, such as removing critical files, modifying registry keys, or deleting data stored in databases.

TotalAgility supports the following script types:

- VB script: Allows a user to write legacy VBScript, based on COM technology
- C# Script: Allows a user to write C# code, the code is compiled into a .net assembly
- VB.NET script: Allows a user to write VB.NET code, compiled into .net assembly
- .NET assembly via .NET activity in a process map and form actions in Forms: Allows a user to call any method from any class in the assembly.

## Allowed

TotalAgility allows you to do the following:

- Execute .NET managed code.
- Read and write to current tenant folder and subfolders. However, other tenant folders are not accessible.
- Access internet (call web services using the http protocol).
- Access a public database, if you have the credentials.
- Use security safe methods, that is, use .NET dll to call any methods from third party .NET dlls that are allowed over security boundary.

### Note

- You must use ILMerge tool to merge all dependent dlls to use them from a custom .NET dll.
- You cannot refer to third party DLLs from script activities.

- Use the .NET node and .NET form action to bypass security for TotalAgility SDK dll. You cannot call TotalAgility SDK from script activities.
- TotalAgility only allows custom dll with .NET Framework 4.0 and above. Any custom dll with NET Framework version lower than 4.0 configured to a .NET activity or a .NET action fails the security test with the following error:

`Assembly does not allow partially trusted callers.`

## Not allowed

TotalAgility does not allow the following:

- Use VB script execution for multi-tenant deployments, as CAS has security restriction over execution of non-CLR managed code.
- Access data from different tenants such as reading memory, file system or database.
- Crash or affect the process execution (from the current or other tenants.)
- Modify operating system systems, update registry, or reboot the machine.
- Call highly secured methods (called security critical methods) from any third party libraries using the custom code.
- Call the TotalAgility SDK APIs using the custom code.
- Access system folder or any folder other than the allowed folder.
- Tenant to read or write from registry.
- Crash Coreworker exe/role or IIS.

## Guidelines on coding for safe scripting

The following are some guidelines on coding for safe scripting.

### Configuration

For TotalAgility on-premise multi-tenant deployments, custom code always executes in a secured mode. However, you can switch off security by changing the application setting, "SafeScripting" to false in the following configuration files:

- `Agility.Server.Web\Web.Config`  
Execution of form actions, sync job, business rule execution in test mode is affected.
- `CoreWorkerService\Agility.Server.Core.WorkerService.exe.config`  
Execution of .NET script, business rule activity, .NET activity, expression in an asynchronous job is affected.
- `Kofax.CEBPM.CPUServer.ServiceHost.exe.config` (Capture activity invoking business rule)  
Turning off the Safe Scripting setting in the transformation server configuration does not impact the security mode for capture activities' execution. It implies that security is off for the business rules triggered during execution.



**Note** It is not recommended to turn off Safe Scripting when tenants are able to create their own scripting in the TotalAgility Designer. It is not possible to turn off setting in TotalAgility Azure.

## Tenant boundary

Tenant can access files only from its own tenant folder and subfolders. This restriction helps in protecting critical system and tenant data. Code which try to access system folder or any folder other than allowed folder fails with the following security exception: Request for the permission of type `System.Security.Permissions.FileIOPermission`, failed.

- Malicious script for reading from system folder:

```
System.IO.File.ReadAllText("C:\Windows\System32\drivers\etc\host");
```

- Malicious script for writing to other tenants folder:

```
System.IO.File.WriteAllText("Other tenant folder\ txt", lines)
```

## Access registry

Tenant cannot read or write from registry. Any code that tries to access registry fails with the following security exception: Request for the permission of type `'System.Security.Permissions.RegistryPermission`, failed.

Malicious script for changing registry:

```
RegistryKey myKey = Registry.LocalMachine.OpenSubKey(registryKey, true);  
myKey.SetValue(registrySubKey, subKeyDowordValue, RegistryValueKind.DWord);
```

## Crash application

Any malicious code that tries to crash Coreworker exe/role or IIS fails with the following security exception: Attempt to access security critical method `'System.Environment.FailFast(System.String)'` failed.

Malicious script for crashing the caller:

```
Environment.FailFast(causeOfFailure);
```

## Stack overflow exceptions

The Stack flow exceptions are unrecoverable memory conditions. These exceptions are not security threat but can be potential risks to business. In such situations, you can only reduce the magnitude of impact as explained below:

- Coreworker role/exe or IIS will not crash which ensures other tenants' work is not impacted.

- Tenant who is responsible for the exception will be impacted. The penalties include:
  - Exception is raised while executing the .NET action, then other .NET actions need to be executed again.
  - Exception is raised while executing the .NET activity, .NET scripts, or expression in a synchronous job, then job need to be executed again.
  - Exception is raised while executing the .NET activity, .NET scripts, or expression in an asynchronous job, then activity will be executed again by the Core Worker service or role.
  - All other work remain unaffected.

Malicious script for causing stack overflow exception:

```
new System.Threading.Thread(delegate ()  
{  
throw new NotImplementedException("Dead");  
}).Start();
```

If you try to call Security Critical methods or the TotalAgility SDK APIs from custom code, the code fails with the following security exception: Attempt to access security critical method.