

Kofax SafeCom Go Canon

Administrator's Guide

Version: 20.25.0.28

Date: 2020-12-18

The logo for KOFAX, consisting of the word "KOFAX" in a bold, blue, sans-serif font.

© 1995-2020 Kofax. All rights reserved.

Kofax is a trademark of Kofax, Inc., registered in the U.S. and/or other countries. All other trademarks are the property of their respective owners. No part of this publication may be reproduced, stored, or transmitted in any form without the prior written permission of Kofax.

Table of Contents

Preface	4
Related documentation	4
Training.....	4
Getting help for Kofax products.....	4
Introduction	6
SafeCom Go Canon.....	6
Requirements.....	6
SafeCom Go Canon products.....	6
SafeCom ID devices.....	7
SafeCom Go Canon	8
Overview.....	8
Install optional card reader	8
Prepare MFP for installation	8
Canon imageRunner ADVANCE series	8
Older Canon devices.....	8
SafeCom Go Canon software installation	9
Licensing.....	9
SafeCom Go Canon licensing changes in SafeCom G4 Server 10.530 or above	10
Canon imageRunner ADVANCE series	10
Older Canon devices.....	11
Specify SafeCom Server and register device.....	12
Display the Pull Print icon	12
SafeCom Go Canon web interface	13
Log in to the SafeCom Go Canon web interface.....	13
Information web page	13
Configuration web page	14
Register web page	17
Log web page.....	18
Language web page	19
Password web page	19
SafeCom Go Canon - How to.....	19
Get the SafeCom Go Canon software.....	19
Specify SafeCom Server.....	20
Register device	20
Set password to prevent unauthorized access.....	20
Select login method.....	20
Log in with Windows without specifying the domain	21
Log in without PIN code	21
Define System Manager	21
Configure the timeout	21
Restore factory default	22
Determine the version.....	22
Select SafeCom Go login as login service	22
Update the version	22
HP Access Control USB proximity card reader (HP M24)	23
Uninstall SafeCom Go Canon	24
Canon imageRunner ADVANCE series	24
Older Canon devices.....	25
Using SafeCom Go Canon	26
Control panel	26
Log in.....	26
Pull Print	29
Copy.....	30

E-mail.....	30
Log out.....	31
Register card.....	31
Register card with PUK code.....	31
Register card with Windows logon.....	31
Troubleshooting	33
SafeCom Go Canon device trace facility.....	33
SafeCom Help Desk Assistant.....	33
SafeCom scan jobs not tracked.....	33
Cannot login to MEAP web page.....	33
Regulatory information.....	34

Preface

This guide includes instructions for installing and using Kofax SafeCom Go Canon.

Related documentation

The full documentation set for Kofax SafeCom Go Canon is available at the following location <https://docshield.kofax.com/Portal/Products/SafeCom/10.530-jaah72kksf/SafeCom.htm>

In addition to this guide, the documentation set includes the following items:

SafeCom Smart Printing

- *Kofax SafeCom Smart Printing Administrator's Quick Guide*
How to install a SafeCom Smart Printing solution.

SafeCom G4

- *Kofax SafeCom G4 Administrator's Guide*
A comprehensive guide that the administrator should consult to make a successful SafeCom solution. Includes information about SafeCom Tracking, SafeCom Rule Based Printing, SafeCom Client Billing, and SafeCom Pay.

SafeCom Go Canon

- *Kofax SafeCom Go Canon User's Guide*
User's guide on how to use SafeCom Go Canon.

Training

Kofax offers both classroom and online training to help you make the most of your Kofax solution. To learn more about training courses and schedules, visit the [Kofax Education Portal](#) on the Kofax website.

Getting help for Kofax products

The [Kofax Knowledge Base](#) repository contains articles that are updated on a regular basis to keep you informed about Kofax products. We encourage you to use the Knowledge Base to obtain answers to your product questions.

To access the Kofax Knowledge Base, go to the [Kofax website](#) and select Support on the home page.

Note The Kofax Knowledge Base is optimized for use with Google Chrome, Mozilla Firefox, or Microsoft Edge.

The Kofax Knowledge Base provides:

- Powerful search capabilities to help you quickly locate the information you need.
- Type your search terms or phrase into the Search box, and then click the search icon.
- Product information, configuration details and documentation, including release news.
- Scroll through the Kofax Knowledge Base home page to locate a product family. Then click a product family name to view a list of related articles. Please note that some product families require a valid Kofax Portal login to view related articles.
- Access to the Kofax Customer Portal (for eligible customers).
- Click the Customer Support link at the top of the page, and then click Log in to the Customer Portal.

- Access to the Kofax Partner Portal (for eligible partners).
- Click the Partner Support link at the top of the page, and then click Log in to the Partner Portal.
- Access to Kofax support commitments, lifecycle policies, electronic fulfillment details, and self-service tools.

Scroll to the General Support section, click Support Details, and then select the appropriate tab.

Introduction

SafeCom Go Canon

SafeCom Go Canon is a solution for Canon MFPs. It integrates with the touch-screen control panel of the Canon MFP and offers user authentication by code or card.

SafeCom Go Canon works together with the SafeCom G4 Server software and is designed to help companies and organizations gain control over their printing costs and document security. The SafeCom solution can be enhanced with add-on modules to build customer-specific, scalable solutions.

Requirements

SafeCom Go Canon supports the MEAP-enabled Canon MFPs listed here:
https://knowledge.kofax.com/MFD_Productivity/00_Supported_Devices/Supported_Devices

- Built-in USB port for connection of USB ID Device is featured on all newer MFPs. Older MFPs may require a Canon USB Application Interface Board (type B1, D1 or G1) and/or any additional Canon hardware.
- MFP must be connected to the network.
- The MFP should set department ID as off.
- The MFP should not have system administrator setting.
- SafeCom device license and Canon MEAP License (royalty fee paid to Canon).
- Canon Access Management System Kit-A2 (AMS) is required to control user's access rights for: Copy, Copy in color, E-mail, Scan and Fax.

Note SafeCom Go Canon does not support Canon devices that use Fiery Controller. Copy process on devices not supporting IMI cannot be stopped when the user runs out of credits.

SafeCom Go Canon products

SafeCom Go Canon	Identification by card requires a USB SafeCom ID Device (card reader) and the Canon MFP must feature an available USB port. On older Canon MFPs, a Canon USB Application Interface Board may be required.
-------------------------	--

SafeCom ID devices

ID Device	Connection
Nuance Mx Proximity Reader	USB
SafeCom AWID Reader	USB
SafeCom Barcode Reader	USB
SafeCom Casi-Rusco Reader	USB
SafeCom Cotag Reader	USB
SafeCom EM Reader	USB
SafeCom HID Prox Reader	USB
SafeCom HID Prox Reader 37 bit (custom)	USB
SafeCom iCLASS Reader	USB
SafeCom Indala Reader 26 bit	USB
SafeCom Indala Reader 29 bit	USB
SafeCom IoProx Reader	USB
SafeCom Legic Reader	USB
SafeCom Magnetic Card Reader DD (Tr 1)	USB
SafeCom Magnetic Card Reader DD (Tr 2)	USB
SafeCom Magnetic Card Reader DD (Tr 3)	USB
SafeCom Mifare Reader	USB
SafeCom Nedap Reader	USB
SafeCom NetWatch	USB

Notes

- ID devices require unique ID Device Licenses. SafeCom ID devices come with ID device licenses, whereas ID device licenses for third-party ID devices must be purchased separately.
- Ensure that on the device, the **Use MEAP Driver for USB Input Device** setting is set to **ON** under **Device Settings > Preferences > External Interface > USB Settings** (on devices where this is applicable). When this setting is **OFF**, the card reader will beep, but no data will be transmitted to SafeCom.
- Kofax SafeCom also supports the HID OMNIKEY 5427 CK Rijkspas reader, if the user acquires the third-party licenses.

Additional information about the ID devices is available in the *SafeCom G4 Administrator's Guide*.

SafeCom Go Canon

Overview

Make sure the SafeCom G4 Server software installation has been completed as described in the SafeCom Smart Printing Administrator's Quick Guide.

1. Install optional card reader.
2. Prepare MFP for installation.
3. Install SafeCom Go Canon software.
4. Restart the MFP.
5. Specify SafeCom server and register device.

Install optional card reader

This section is only relevant if users will log in by card. Connect the SafeCom ID Device directly to the external USB port. The USB port is located at the rear next to the network port.

Some MFPs feature a USB port near the touch-screen control panel. This is reserved for connection of storage media, such as USB memory key. Do not connect the SafeCom ID device to this USB port.


Prepare MFP for installation

For detailed instructions please consult the supplied Canon documentation. Ensure that the MFP has Department ID management disabled. Please refer to the appropriate section:

- Canon imageRunner ADVANCE series
- Older Canon devices


Canon imageRunner ADVANCE series

Note When SafeCom is responsible for authentication (SafeCom Go Login is started) then the Settings/Registration button only works once logged into the SafeCom solution. Access to Management Settings is only allowed if you are logged in as Administrator or Technician.

1. Press  to access **Settings/Registration**.
2. Tap **Management Settings**.
3. Tap **User Management**.
4. Tap **Department ID Management** and then **Settings**.
5. Make sure that **Enable Department ID Management** is cleared.
6. Tap **OK**.


Older Canon devices

Note When SafeCom is responsible for authentication (SafeCom Go Login is started) then the Additional Functions button only works once logged into the SafeCom solution.

1. Press  to access **Additional Functions**.
2. Tap **System Settings**.
3. In **System Settings** tap **Dept ID Management**.
4. Tap **Off** and tap **OK**.
5. In **System Settings** tap **System Manager Settings**.

6. Make sure **System Manager ID** is blank and tap **OK**.
7. Tap **Done**.

On older Canon devices you may want to select MEAP (Pull Print) as the Initial Function. If so, perform the following steps:

8. Press  to access **Additional Functions**.
9. Tap **Common Settings**.
10. In **Common Settings** tap **Function Display Settings**.
11. In **Initial Function and Function Order Settings** tap **Settings**.
12. Tap **MEAP** and tap **Set as Initial Function**.
13. Tap **Next**. Tap **OK**.
14. In **Common Setting** tap **Auto Clear Setting**.
15. Tap **Initial Function**. Tap **OK**.
16. Tap **Done**.
17. Tap **Done**.

Note Step 8-17 may vary between models. For detailed instructions please consult the supplied Canon documentation.

SafeCom Go Canon software installation

The software must be installed via the Canon MFP's web interface. It is not possible to send the software via the SafeCom administrator.

Please refer to the appropriate section:

- [Canon imageRunner ADVANCE series](#)
- [Older Canon devices](#)

Licensing

Starting from SafeCom Go Canon version 20.25.0.28.0.1, Canon licensing uses a new royalty free licensing agreement between Kofax and Canon, as the Canon MEAP license used by Kofax embedded applications is now a royalty free A1 license.

Important Both the SafeCom Go and SafeCom Go Login apps require a separate license to apply for and install.

To obtain and apply your A1 LIC license file:

1. Open the LAN file that was included with the application JAR file and record the license access number.

Note: If a LAN file is not included with the application JAR file, use the following LAN numbers:

SafeCom Go	TBR4-EAD4-QBR4-8UVQ
SafeCom Go Login	VE7H-TPP8-Q6EC-N2WE

2. Record and add the serial number for each Canon MFP you wish to license in a CSV format.
3. Navigate in a web browser to the Canon License Management System (<http://www.canon.com/meap>).
4. Enter the LAN number and click **Next**.
5. Verify information and click **Apply to Issue a License**.
6. Navigate to the CSV file on your local machine.
7. Complete the rest of the steps until a license (.lic) file is downloaded.

8. Use the downloaded license file when installing the SafeCom Go and SafeCom Go Login MEAP applications on your Canon MFPs.

SafeCom Go Canon licensing changes in SafeCom G4 Server 10.530 or above

To support A1 licensing, SafeCom G4 Server 10.530 or above will not require Canon licenses for SafeCom Go Canon version 20.25.0.28.0.1 or above. When adding Canon MFPs running these versions of the software, SafeCom G4 Server will use any available Canon licenses, then, when no Canon license is available, will use Go licenses for these devices.

For any SafeCom Go Canon versions below 20.25.0.28.0.1, a Canon license will be required for any Canon MFPs added to SafeCom G4 Server 10.530 or above.

For any SafeCom G4 Server versions below 10.530, a Canon license will be required for any Canon MFPs added to the SafeCom G4 Server.

Canon imageRunner ADVANCE series

1. In a web browser, enter the IP address of the MFP in the address field followed by
:8000/sms:
http://<device IP>:8000/sms
Note JavaScript (Active Scripting) must be enabled in the browser.
2. Enter the password.
3. Click **Log In**.

Install SafeCom Go login application.

4. Click **Enhanced System Application Management** in the left menu.
5. Scroll down to the section **Install Enhanced System Application/License**.
6. In **Enhanced System Application File Path**, click **Browse** to locate and select the safecom_go_canon_nnnnnnnn_login.jar file. Click **Open**.
If the file is not found, you need to get it from [Get the SafeCom Go Canon software](#).
7. In **License File Path**, click **Browse** to locate and select the safecom_go_canon_nnnnnnnn_login.lic file. Click **Open**.
8. Click **Install**.
9. When the **Confirm** page appears, click **Yes** to proceed with the installation.
10. In the **Login Service** section, select **SafeCom Go Login** and click **SWITCH**.
If the Canon Access Management System Kit-A2 (AMS) is installed, a confirmation message may appear listing applications that do not support function restrictions. Click **OK**.

Install SafeCom Go application:

11. Click **Install MEAP Application** in the left menu.
12. In **Application File Path**, click **Browse** to locate and select the safecom_go_canon_nnnnnnnn.jar file. Click **Open**.
13. In **License File Path**, click **Browse** to locate and select the safecom_go_canon_nnnnnnnn.lic file. Click **Open**.
14. Click **Install**.
15. When the **Confirm** page appears, click **Yes** to proceed with the installation.
16. When the **SafeCom Go is installed** page appears, click **To MEAP Application Management**.
17. Select **SafeCom Go** and click **Start**.
18. Wait until the **Status for SafeCom Go** says **Started**.
19. Check the device's scan log settings on the Canon imageRunner Advance web page. Go to the **Settings\Registration** page, click **Management Settings > Device Management**. Find the **Display Log** and make sure that **Display Job Log** is selected.

Prevent additional user credentials popup when sending e-mails:

20. Go to the device web page and click **Settings/Registration**.
21. In the **Function Settings** menu to the left, click **Send**.
22. In the **Common Settings** menu to the right, click **Communication Settings – E-Mail/Fax Settings**.
23. Clear the **Use SMTP Authentication for Each User** check box and click **OK** in the top right corner.

Restart the MFP:

24. On the control panel, press and hold the power button to restart the MFP. The **Restart** device command in SafeCom Administrator does not work with Canon MFPs.

Older Canon devices

1. In a web browser, enter the IP address of the MFP in the address field followed by
:8000/sms:
`http://<device IP>:8000/sms`
Note JavaScript (Active Scripting) must be enabled in the browser.
2. Enter the password.
3. Click **Log In**.

Install SafeCom Go login application:

4. Click **System Management**.
5. Click the **Enhanced Sys. App** tab and scroll to the bottom of the page.
6. Click **Browse** to locate and select the safecom_go_canon_nnnnnnnn_login.jar file. Click **Open**.
If the file is not found, you need to get it from [Get the SafeCom Go Canon software](#).
7. In **License File to Install**, click **Browse** to locate and select the safecom_go_canon_nnnnnnnn_login.lic file. Click **Open**.
8. Click **Install**.
9. When the **Confirm** page appears, click **OK** to proceed with the installation.
10. After the install, select **SafeCom Go Login** and click **Select**.

Install SafeCom Go application:

11. Click the **Install** tab.
12. In **Application File**, click **Browse** to locate and select the safecom_go_canon_nnnnnnnn.jar file. Click **Open**.
13. In **License File**, click **Browse** to locate and select the safecom_go_canon_nnnnnnnn.lic file.
14. Click **OK**.
15. When the **Confirm** page appears, click **OK** to proceed with the installation.
16. After the install, select **SafeCom Go** and click **Start**.
17. Wait until the **Status for SafeCom Go** says **Started**.

Restart the MFP:

18. On the control panel, press and hold the power button to restart the MFP. The **Restart** device command in SafeCom Administrator does not work with Canon MFPs.

Specify SafeCom Server and register device

1. In a web browser, enter the IP address of the MFP in the address field followed by :8000/safecom:

http://<device IP>:8000/safecom

Note JavaScript (Active Scripting) must be enabled in the browser.

If a System Manager is defined (2.8.8) then enter **System Manager ID** and **System PIN** and click **Administrator Login** to access all the Canon web pages. Clicking **General User Login** instead will give limited access where it is not possible to control management settings and restart the Canon device remotely.

2. Click **Configuration** on the menu to access the SafeCom **Configuration** web page ([Configuration web page](#)). Type admin for the user name, type your password (default is nimda) and then click **OK**.
3. Enter **Group name**, **Server address** and **TCP port** (default is 7500). If the SafeCom server is clustered, you must enter the address of the virtual server.


4. Click **Apply**.
5. Click **Register** on the menu to access the SafeCom **Register** web page (2.7.4).
6. Use the built-in Technician account to register the device. Enter the **User logon** (default is TECH) and **PIN code** (default is 1234).
7. Click **Register**.

Display the Pull Print icon

On Canon imageRunner ADVANCE series the **Pull Print** icon is by default added to the bottom of the list and in some cases, users must tap **Show All** on the printer's control panel to see it.

To display bring the SafeCom Pull Print at the top perform these steps:

1. Log in at the printer as a user with administrator rights in SafeCom.

2. Tap the MEAP icon  in the top right corner of the screen.
3. Tap **Main Menu Button Display Settings**.
4. Scroll to the bottom of the list and tap **Pull Print**.
5. Tap **Up** until **Pull Print** is at the desired position.
6. Tap **OK**.

SafeCom Go Canon web interface

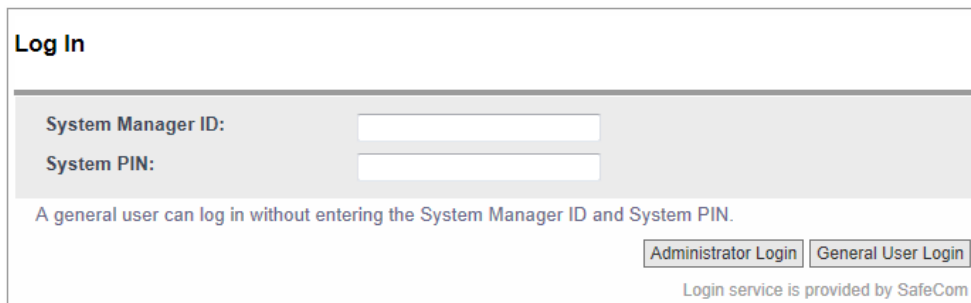
The SafeCom Go Canon web interface integrates into the structure and design of the Canon Embedded Web Server. The SafeCom Go Canon web interface consists of two parts, 1) a public part, namely the **Information** web page and 2) a password-protected part.

Log in to the SafeCom Go Canon web interface

1. In a web browser, enter the IP address of the MFP in the address field followed by :800/safecom:
`http://<device IP>:8000/safecom`

Note JavaScript (Active Scripting) must be enabled in the browser.

If a System Manager is defined ([Define System Manager](#)) then enter **System Manager ID** and **System PIN** and click **Administrator Login** to access all the Canon web pages. Clicking **General User Login** instead will give limited access where it is not possible to control management settings and restart the Canon device remotely.



Log In

System Manager ID:

System PIN:

A general user can log in without entering the System Manager ID and System PIN.

Login service is provided by SafeCom

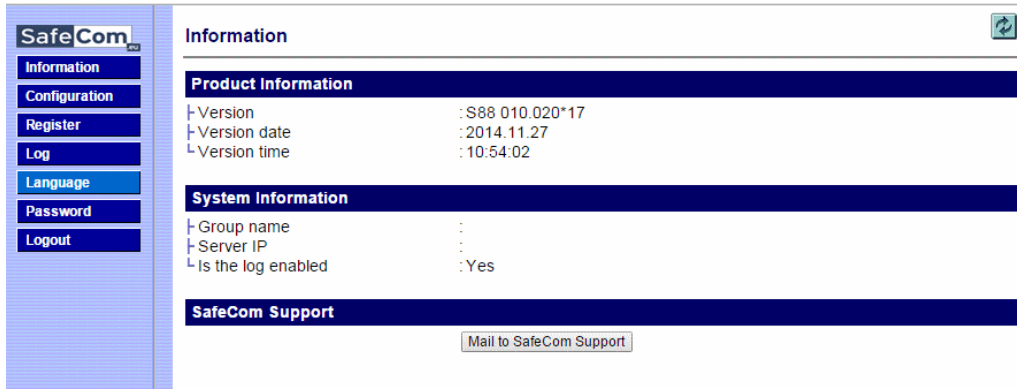
Note On certain Canon devices, you can log in with a guest account, which does not need SafeCom authorization. For this guest account, you can specify the 'from' field of the email messages sent.

2. Click **Configuration** on the menu to access the SafeCom **Configuration** web page. Type `admin` for the user name, type your password (default is `nimda`) and then click **OK**. You must enter this information regardless if a System Manager is defined.

Information web page

The **Information** web page shows version and configuration summary.

1. Click **Information** on the menu to access the **Information** web page.



Configuration web page

The **Configuration** web page is used to configure SafeCom Go Canon as to which server it should connect to, how users are to be identified, and so on.

The **SafeCom Server** section is used to specify the SafeCom server. Enter **Group name**, **TCP port** (default is 7500) and **Server address** in **Add server**. See also [Specify SafeCom Server](#).

Note After you click **Apply** you should allow one minute before the changed SafeCom Server settings take effect. Otherwise you may get a login error at the MFP.

Device name and **Device model** are automatically filled in. **Device location** and **Contact person** are useful for maintaining the SafeCom solution. **Community Name** specifies the SNMP community name for the device; its default value is **public**.

Fill out the Configuration web page according to the following descriptions:

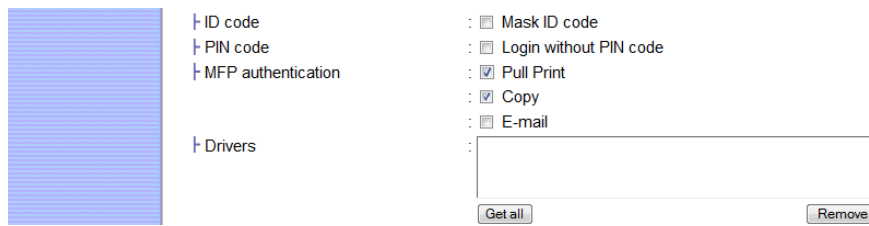
- Login method:

- **Auto-sense** (default): If a USB ID device is connected to the MFP then **Card or Windows** is selected. If no USB ID device is detected then **ID code** is selected. The **Auto-sense** selection changes within 10 seconds after a USB ID device is either connected or disconnected to the device. **Auto-sense** is supported in SafeCom Go Canon S88 010.020*01 and newer.
 - **ID code**: Login by ID code only.
 - **Card**: Login by card only.
 - **Card or ID code**: Login by card or ID code.
 - **Card or Windows**: Login by card or by entering Windows username, password, and domain.
- **Pre-fill domain:**
 - **Blank** (default): Use if users belong to different domains. This means that all users need to enter their domain when they login with their Windows username and password.
 - **Default domain**: Use if most users belong to a particular domain as the specified **Default domain** is pre-filled making it easier for the users to login with their Windows username, password, and domain.
 - **Hide**: Use if all users belong to the same domain as it saves users from being prompted for the domain when they login with their Windows username and password. Be sure to have specified the **Default domain**, otherwise the choice reverts back to **Blank** when you click **Apply**.

Note The SafeCom G4 server must be a member of the domain or trusted by the domain.

- **Mask ID code**: Check to increase security by using the asterisk (*) character to mask the entered ID code.
- **Show newest first**: Check to have documents listed and printed in last-in first-out order.
- **Login without PIN code**: Check if users do not need to enter a 4-digit PIN code at login. This setting applies to the device and overrules the equivalent user property on the SafeCom G4 server.
- **Drivers**: When Pull Printing, SafeCom compares the driver name embedded in the print job with this list of driver names. If no match is found the document appears with a question mark [?] in the document list on the device. This way the user is warned that fidelity is low and the document may print incorrectly.
 - To populate the list of drivers by retrieving a list of driver names from the SafeCom server, click **Get all** and then **Apply**.
 - To add a driver name manually click **Add**.
 - To remove a driver from the list, select the driver name on the list and click **Remove**.
- **Post track**: Check to allow the tracking record for a Pull Print job to be adjusted to reflect the actual number of pages printed and also the number of these pages that were in color. The price of the job is also adjusted.
- **Copy track, Email track and Fax track**: This is available on devices without Canon Access Management System Kit-A2 (AMS).
 - **Copy track** - check in order to track copies.
 - **E-mail track** - check to track E-mail jobs submitted with the MFP's **Scan and Send** function.
 - **Fax track** - Check to track Fax jobs.
- **MFP authentication**: This is available on Canon imageRunner ADVANCE series with Canon Access Management System Kit-A2 (AMS). You can choose if users are required to login before they can:
 - **Pull Print** – collect documents at any device.

- **Copy** - make hardcopies of scanned documents. The ability to control access to copy in color can be controlled per user in the SafeCom Administrator and requires SafeCom G3 version S82 070.440*01 or higher.
- **E-mail** - send scanned documents as attachments to e-mail.



- **High speed print:** Check to allow faster printing. With high speed print the print speed becomes comparable to that of printing the document directly to the device.
- **Guest Login:** Check to allow users to tap a Guest button on the SafeCom Go login screen. The Guest button gives access to the Scan to Email function. This feature is not available on Canon imageRUNNER ADVANCE series that has installed Canon Access Management System Kit-A2 (AMS).
- **Timeout:** Since version S88 010.020*02 the user is automatically logged out according to the printer's **Auto Reset Time** (on older models a.k.a. **Auto Clear Time**). See Configure the timeout.
- **Encryption:** This section is only relevant for SafeCom G3 version S82 070.400*01 or higher. Leave asymmetric encryption (RSA, 512-bit, 1024-bit and 2048-bit) and the symmetric encryption (AES / TwoFish, 128-bit and 256-bit) at **Default** and the device will try to honor the encryption method and size that has been specified on the server while at the same time taking the processing power and memory of the device into consideration.
- **Restore:** Click to set all settings to their default value.

Register web page

The **Register** web page is used to register the device with the SafeCom server.



The MFP can be used with SafeCom once it has been registered with the SafeCom server.

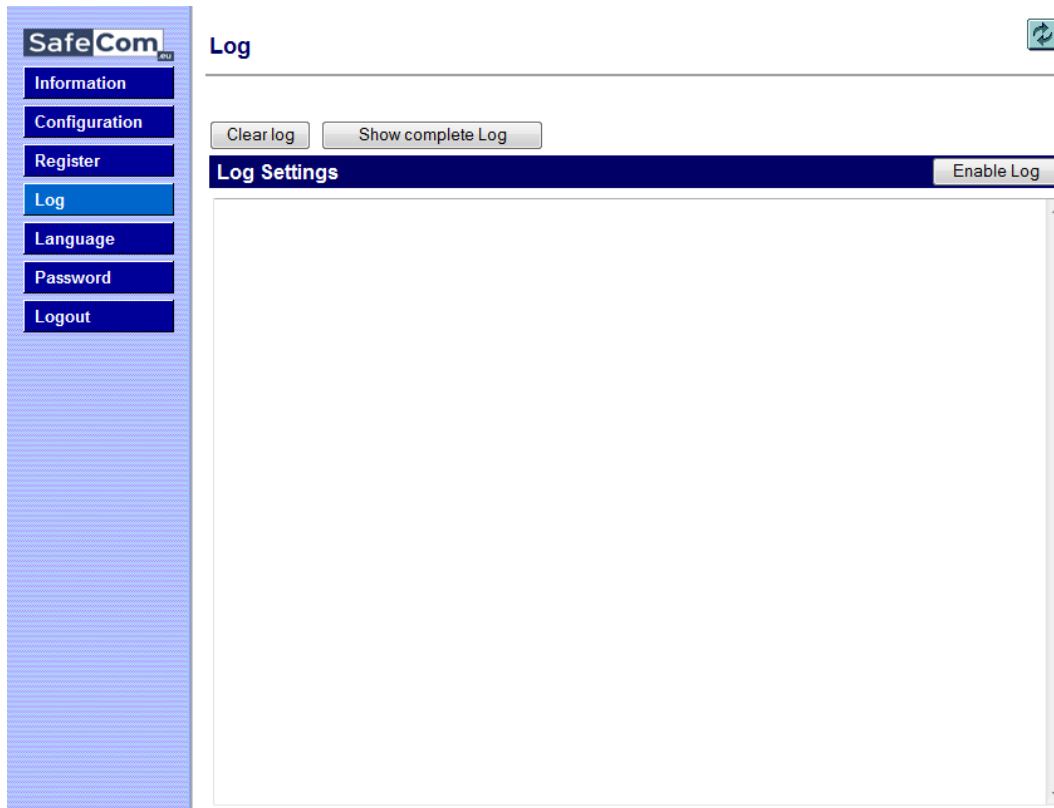
1. Enter the **User logon** and **PIN code** of a user with Technician or Administrator rights. The user must have a PIN code.
2. Click **Register**.

Note You can use the built-in Technician account TECH with the default PIN code 1234.

Alternatively this can be accomplished when a user with Technician or Administrator rights has been identified at the MFP.

Log web page

The **Log** web page allows enabling, disabling, and viewing of logging information.



Logging should only be enabled if advised to do so as part of a troubleshooting process.

1. Click **Enable** to start logging.
2. Click **Disable** to stop logging (text changes on the button).

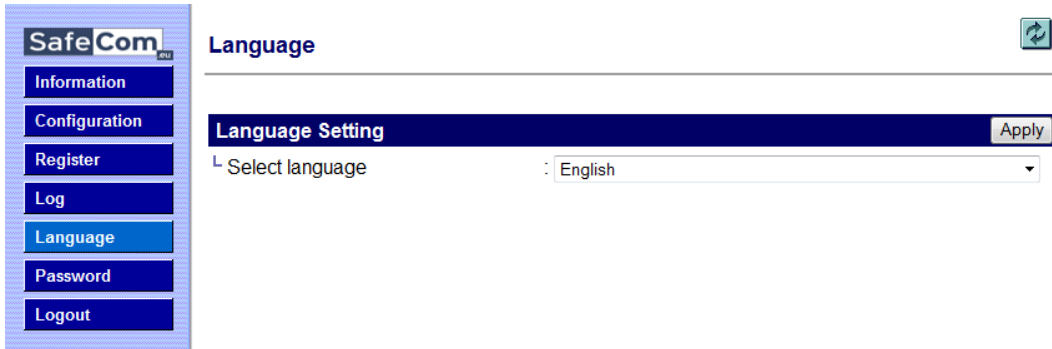
When the log file reaches the 512 KB maximum the log file is overwritten with new data.

If **Upload log to server** is enabled the device will upload the log to the server once an hour. The feature should *only* be enabled as per instruction by SafeCom Support. If the device is unable to upload to the server, the device will keep the log and try to upload again after yet another hour.

Note The device will always log performance data (network latency, authentication duration of successful logins, number of **Out of order** occurrences and duration, failover and failback between G4 servers, device reboots, changes in firmware and Go versions).

Language web page

The **Language** web page allows selection of language.



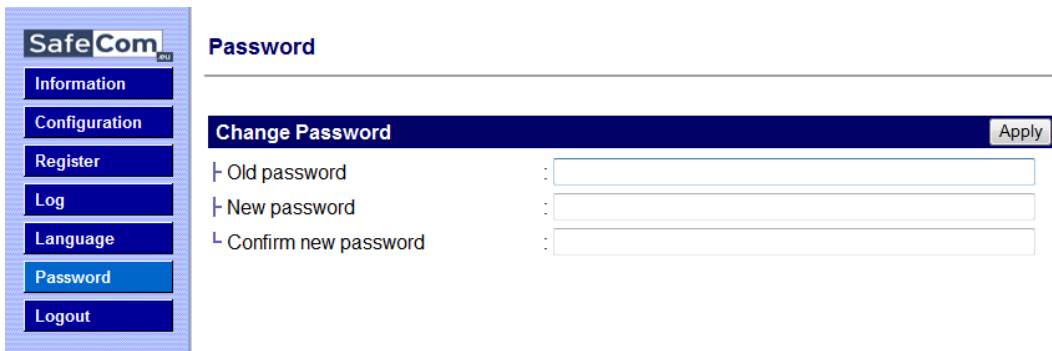
The new language takes effect the next time someone logs in at the MFP.

1. Select a **Language**.
2. Click **Apply**.

All language texts are stored in the XML file captions.xml. Additional languages can be added to this file if required.

Password web page

The **Password** web page allows change of password.



SafeCom Go Canon – How to

The following subsections contain step-by-step instructions for some of the administrator's common tasks.

Get the SafeCom Go Canon software

The SafeCom Go Canon software files were installed from the SafeCom CD or can be downloaded using the **SafeCom Administrator** function **Check for updates**.

You can also download the software package:

1. Download the safecom_go_canon_nnn.exe file from the link supplied to you.
2. Double-click the safecom_go_canon_nnn.exe file.
3. Click **Next**.

4. Choose the destination folder. Click **Next**.
The default destination folder is C:\Program Files\SafeCom\SafeComG4\device_software.
5. Click **Install**.
6. Click **Finish**.

Specify SafeCom Server

1. Open the **Configuration** web page ([Configuration web page](#)).

2. Enter the **Server address** (hostname or IP address) in **Add server** and click **Add**.

In a multi-server solution you can click **Move up** and **Move down** to prioritize the order in which the servers are contacted in case the first one on the list becomes unavailable.

3. Click **Apply**.

Note After you click **Apply** you should allow one minute before the changed SafeCom Server settings take effect. Otherwise you may get a login error at the MFP.

Register device

1. Open the **Register** web page ([Register device](#)).
2. Use the built-in Technician account to register the device. Enter the **User logon** (default is TECH) and **PIN code** (default is 1234).
3. Click **Register**.

Alternatively the device can be registered when a user with Technician or Administrator rights has been identified at the MFP. Once the device is registered it appears in the **SafeCom Administrator**.

Set password to prevent unauthorized access

1. Open the **Password** web page ([Password web page](#)).
2. Enter the **Old password**, **New password** and **Confirm new password**. The password is maximum 8 characters.
3. Click **Apply**.

Warning Make sure to store the password in a secure place. If you forget the password, you need to uninstall SafeCom Go Canon.

Select login method

1. Open the **Configuration** web page ([Configuration web page](#)).
2. Change **Login method** to any of the following: **Card**, **Card or ID code**, **Card or Windows**.

3. Click **Apply**.

Log in with Windows without specifying the domain

If all users belong to the same domain, you can avoid prompting users to enter the domain at the printer.

1. Open the **Configuration** web page ([Configuration web page](#)).
2. Specify a **Default domain**.
3. Change **Pre-fill domain** to **Hide**.
4. Click **Apply**.

Log in without PIN code

Use of PIN code is possible on devices with keypad or touch screen. This setting applies to the device and overrules the equivalent user property. Requesting the user to enter a personal 4-digit PIN code when they identify themselves at the printer can enhance document security.

1. Open the **Configuration** web page ([Configuration web page](#)).
2. Clear **Login without PIN code** if you want to prompt users for PIN code.
3. Click **Apply**.

Define System Manager

1. In a web browser, enter the IP address of the MFP in the address field followed by :8000:
`http://172.16.6.55:8000`

Note JavaScript (Active Scripting) must be enabled in the browser.

2. Click **Settings/Registration**.
3. Click **User management**.
4. Click **System Manager/Contact Person Information Settings**.
5. Check **Set ID and PIN**.
6. Enter **System Manager ID**.
7. Enter **System PIN** and repeat the entered PIN in the **Confirm** field.
8. Click **OK**.
9. The **Log In** web page appears. If SafeCom Go is installed, the web page is provided by SafeCom. See also [Log in to the SafeCom Go Canon web interface](#).

Log In

System Manager ID:

System PIN:

A general user can log in without entering the System Manager ID and System PIN.

Login service is provided by SafeCom

Configure the timeout

The user is automatically logged out according to the printer's **Auto Reset Time** (or **Auto Clear Time** on older models).

1. In a web browser, enter the IP address of the MFP in the address field followed by :8000:

`http://<device IP>:8000`

Note JavaScript (Active Scripting) must be enabled in the browser.

2. Click **Settings/Registration**.
3. Click **Timer/Energy Settings**.
4. Change the **Auto Reset Time** and click **OK**.

On older models:

1. In a web browser, enter the IP address of the MFP in the address field followed by
:8000:
`http://<device IP>:8000`

Note JavaScript (Active Scripting) must be enabled in the browser.

2. Click **Add. Func.**
3. Click **Custom Settings**.
4. Click **Timer Settings**.
5. Change the **Auto Clear Time** and click **OK**.

Restore factory default

1. Open the **Configuration** web page ([Configuration web page](#)).
2. Click **Restore**.

Determine the version

The version of the SafeCom Go Canon software can be determined from the **Information** web page.

1. Open the **Information** web page ([Information web page](#)).

The version can also be seen in the **Device properties** dialog in **SafeCom Administrator**.

Select SafeCom Go login as login service

1. In a web browser, enter the IP address of the MFP in the address field followed by
:8000/sms:
`http://<device IP>:8000/sms`

Note JavaScript (Active Scripting) must be enabled in the browser.

2. Enter **Password**.
3. Click **Log In**.
4. In the browser click on the **System Management** tab.
5. Click on the **Enhanced Sys. App** tab.
6. In the **Login Service** section select **SafeCom Go Login**.
7. On the control panel press and hold the power button to restart the MFP.

Update the version

If you are updating from a previous version to S88 010.010*03 you need to uninstall the previous SafeCom Go Canon version first. This is because the product now has a new ID.

1. Uninstall SafeCom Go Canon ([Uninstall SafeCom Go Canon](#)).
2. Install the new SafeCom Go Canon ([SafeCom Go Canon software installation](#)).

HP Access Control USB proximity card reader (HP M24)

To use the HP Access Control USB proximity card reader (also known as HP M24) you need to use SafeCom G4 and you **MUST** have an ID Device license associated with the device. In SafeCom Administrator open the **Device properties** dialog, go to the **License** tab and ensure that **ID device** is checked.

The HP M24 reader can support two different technologies. The HP M24 reader must be programmed prior to connection to the Canon device. Below is a list of the HEX codes and what card type they correspond to.

HEX code	Card type
6F01	iClass CSN ISO1443A CSN ISO15693A CSN (RDR-758x Compatible)
7D01	HID iClass CSN
7E01	ISO 15693A CSN I-Code CSN my-d CSN Etag CSN (Secura Key) Tag-It CSN (Texas Instruments)
7F01	ISO 14443A CSN Advant CSN (Legic) DESFire CSN I-tag CSN MiFare CSN (Philips, NXP) MiFare Ultralight CSN (Philips, NXP)
EA01	Farpointe Data NXT UID Keri NXT UID Pyramid UID
EA02	Farpointe Data 26 Bit Keri NXT 26 Bit Pyramid 26 Bit
EB02	Radio Key (Secura Key -02) (RDR-6Z8X Compatible)
EC01	SecuraKey - 01
ED02	Indala ASP+ UID (Motorola) – No decryption, raw data returned.
EF04	HID Prox
F004	ReadyKey PRO UID
F201	HiTag 2 Primary (RDR-6HXX Compatible)
F204	HiTag 2 Alternate
F302	HiTag 1 and S Primary (RDR-6H8X Compatible)
F304	HiTag 1 and S Alternate
F401	Deister UID
F503	GProx-II UID
F602	Cardax UID Russwin UID
F702	2Smart Key (Honeywell) KeyMate Nexwatch (Honeywell) Nexkey QuadraKey
F801	Keri UID (RDR-6K8X Compatible)

HEX code	Card type
F802	Keri 26 Bits
F902	IoProx (Kantech)
FA02	Awid
FB01	DIGITAG EM/Marin EM410x/Rosslaire Primary (RDR-6E8X Compatible)
FB02	EM/Marin EM410x/Rosslaire Alternate
FC02	Casi-Rusco
FD01	Indala ASP UID (Motorola) – No Script used, raw data is returned.
FD02	Indala ASP 26 Bit (Motorola) – Indala 26 bit script used.

Uninstall SafeCom Go Canon

Please refer to the appropriate section:

- [Canon imageRunner ADVANCE series](#)
- [Older Canon devices](#)

Canon imageRunner ADVANCE series

1. In a web browser, enter the IP address of the MFP in the address field followed by :8000/sms:
http://<device IP>:8000/sms

Note JavaScript (Active Scripting) must be enabled in the browser.

2. Enter **Password**.
3. Click **Log In**.

Stop and uninstall SafeCom Go and remove the license file:

4. In the browser click **MEAP Application Management** in the left menu.
5. Select **SafeCom Go** and click **Stop**.
6. When it has stopped, click on **SafeCom Go** under the Application Name. The **Application/License Information** page is displayed.
7. Scroll down to **License Information** and press **License Management**. The **License Management** page is displayed.
8. Go to Disable License File, and click Disable.
9. When the **Confirm** page appears click **Yes** to disable the license file.
10. When the License Management page is displayed again, go to Download/Delete Disabled License File and press Delete.
11. When the **Confirm** page appears click **Yes** to delete the license file.
12. Navigate back to **MEAP Application Management** and click **Uninstall** next to SafeCom Go.
13. When the **Confirm** page appears click **Yes** to uninstall SafeCom Go.

Change Login Service to Default Authentication:

14. Click Enhanced System Application Management in the left menu.
15. In the Login Service section select Default Authentication. Click SWITCH.

Restart the MFP:

16. On the control panel press and hold the power button to restart the MFP.

Uninstall SafeCom Go Login:

17. In the browser click **Enhanced System Application Management** in the left menu.
18. In the Login Service section select SafeCom Go Login. Click Uninstall.
19. When the **Confirm** page appears click **Yes** to uninstall login service.

Older Canon devices

1. In a web browser, enter the IP address of the MFP in the address field followed by
:8000/sms:
`http://<device IP>:8000/sms`

Note JavaScript (Active Scripting) must be enabled in the browser.

2. Enter **Password**.
3. Click **Log In**.

Stop and uninstall SafeCom Go:

4. In the browser in the **Application List** select **SafeCom Go**. Click **Stop**.
5. In the Application List select SafeCom Go. Click Uninstall.
6. Click **OK**.

Change Login Service to Default Authentication:

7. Click on the **System Management** tab.
8. Click on the **Enhanced Sys. App** tab.
9. In the **Login Service** section select **Default Authentication**. Click **Select**.

Restart the MFP:

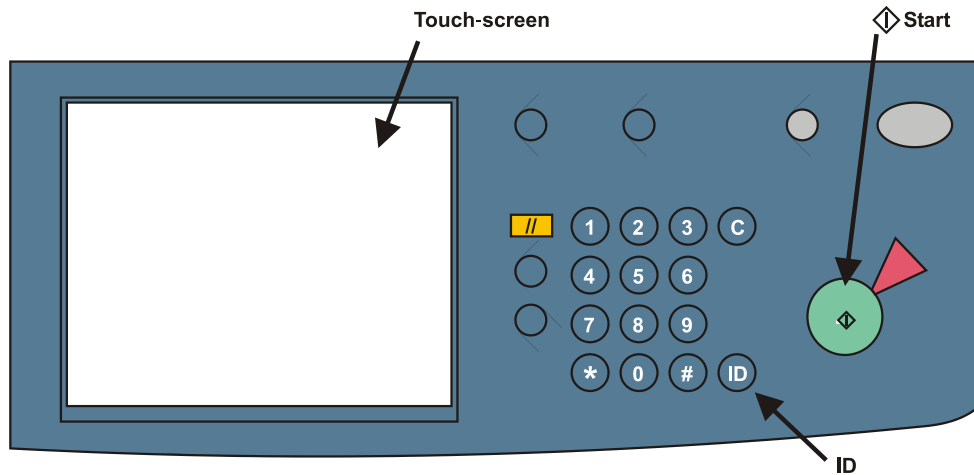
10. On the control panel press and hold the power button to restart the MFP.

Uninstall SafeCom Go Login:

11. In the browser click on the **System Management** tab.
12. Click on the **Enhanced Sys. App** tab.
13. In the Login Service section select SafeCom Go Login. Click Uninstall.
14. Click **OK**.

Using SafeCom Go Canon

Control panel



Log in

The screenshot shows a login interface with a dark blue header containing the text 'Use card or enter Windows credentials to login' and the 'SafeCom' logo. Below the header are three input fields: 'User name', 'Password', and 'Domain'. At the bottom right of the form is an 'OK' button with a right-pointing arrow.

Log in with card:

1. Use card reader.

Log in with card and PIN code:

1. Use card reader.
2. Tap **PIN code** on the touch screen.
3. Enter **PIN code** and tap **OK**.
4. Tap **OK** (or press the **ID** button).

Log in with ID code:

1. Tap **ID code** on the touch screen. If the ID code is numeric only you can enter the ID code on the numeric keypad.
2. Enter **ID code** on the screen and tap **OK**.

3. Tap **OK** (or press the **ID** button).

Log in with ID code and PIN code:

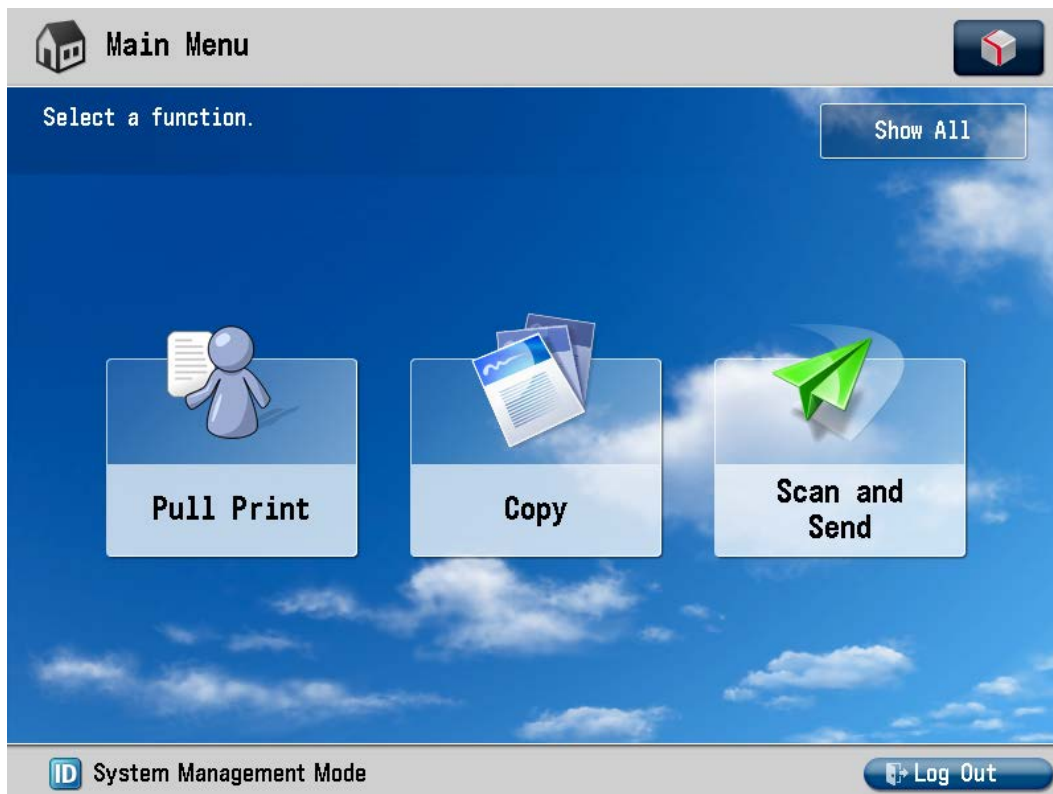
1. Tap **ID code** on the touch screen.
2. Enter **ID code** and tap **OK**.
3. Tap **PIN code** on the touch screen.
4. Enter **PIN code** and tap **OK**.
5. Tap **OK** (or press the **ID** button).

Log in with Windows:

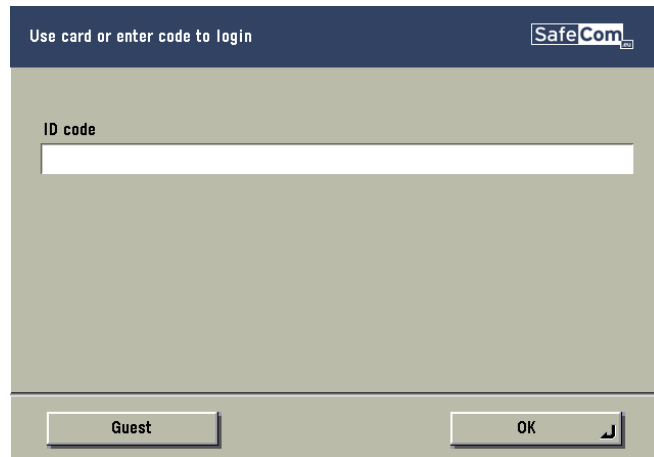
If the **Login method** is **Card or Windows** it is possible to log in by either using your card or entering your Windows login credentials:

1. Tap **Username** and enter **Username** on the touch screen. Tap **OK**.
2. Tap **Password** and enter **Password** on the touch screen. Tap **OK**.
3. Tap **Domain** and enter **Domain** on the touch screen. Tap **OK**.
4. Tap **OK**.

Note Username and Password cannot be left blank.



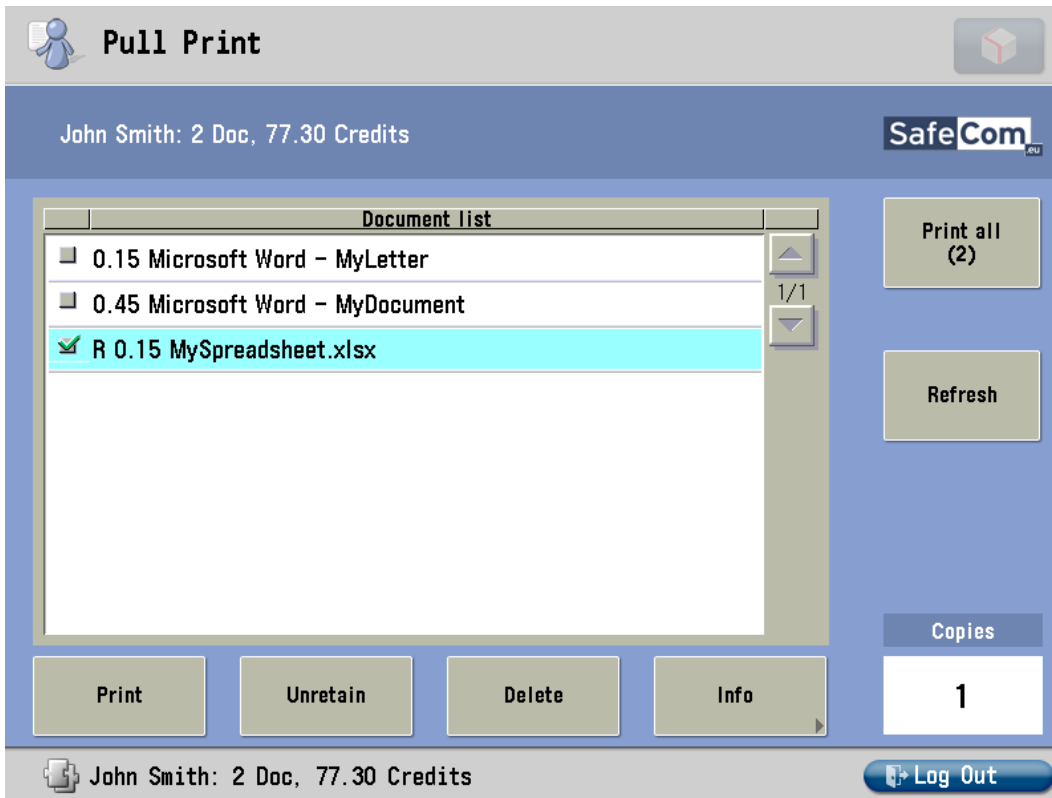
Guest Login:




1. Tap **Guest** button on the SafeCom Go login screen to access for example the Copy function without having to be authenticated by SafeCom Go.

Note This feature is not available on Canon imageRUNNER ADVANCE series that has installed Canon Access Management System Kit-A2 (AMS). The Guest button is available if Guest Login is checked on the SafeCom Go Configuration web page ([Configuration web page](#)).

Pull Print



In this example, the preceding **R** shows the document is retained. The **0.15** is the cost of the document. A delegated document will have a preceding **D**. Tap the **Info** button to see information about who delegated the document. A group print document will have a preceding **G**.

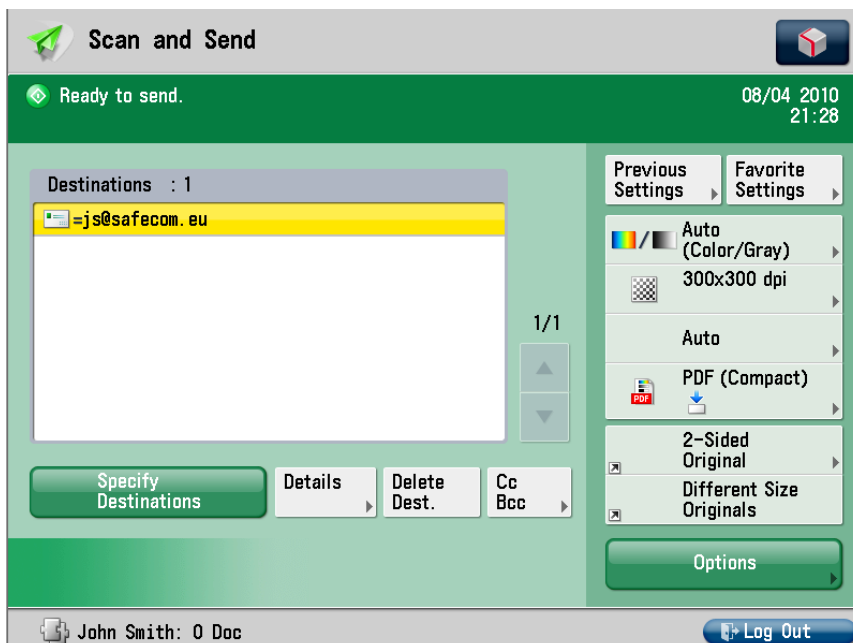
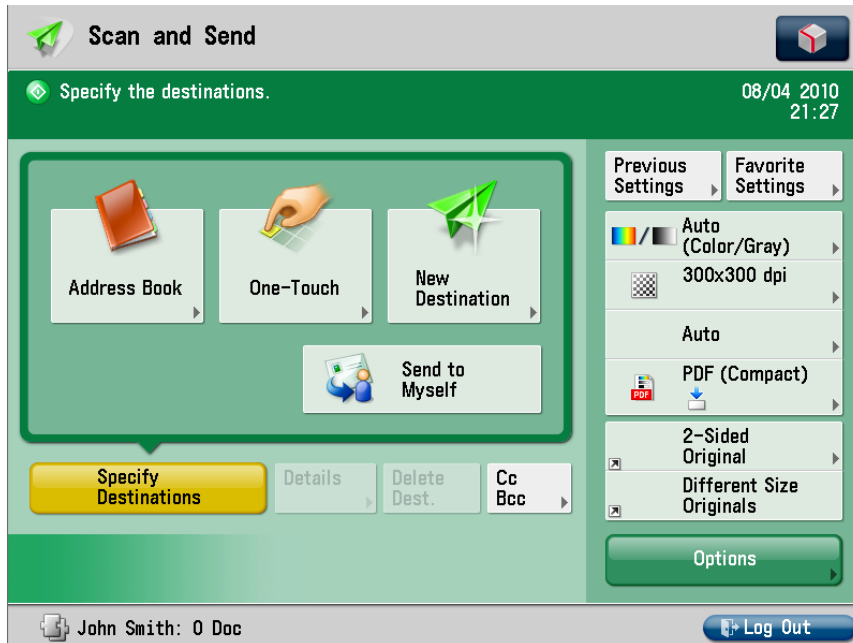
- Tap **Print all** to print all documents, excluding any retained documents. Documents are printed in chronological order (oldest first).
- Tap **Print** to print the selected documents.
- Tap **Retain** if you want the selected documents to remain on the list (server) after they have been printed.
- Tap **Delete** to delete the selected documents.
- Tap **Info** to see information about the selected documents, including cost, driver name, use of color and duplex.
- Tap **Logout** to logout.
- Tap **Refresh** to update the list of documents with pending documents that has finished spooling after the user logged in.
- Use the physical keypad to enter the number of **Copies** you want of the selected documents. Press the **C** button to reset copies to 1.
- Press the  **Main Menu** button to select other function such as **Copy**. On older Canon devices tap the **Arrow key [->]** to access other MFP functions such as **Copy**.

Copy

Once logged in (Log in), tap the **Arrow key [->]** to access the **Copy** function and then the **Start** button to copy the documents placed in the automatic document feeder (ADF).

E-mail

If the **E-mail** address of the user is known in the SafeCom solution, then the user can tap **Send to Myself** to have the address written in the **To:** field.



Log out

There is a configurable **Timeout** ([Configure the timeout](#)) that defaults to 60 seconds. A user is automatically logged out if no buttons are tapped during that time. To log out:

1. Tap **Logout** in the **Document list** dialog.
2. Press the **ID** button.
3. Use card again (if a card reader is connected and you logged in by card).

Note If Coping is done the **Logging out** message is displayed until the MFP is in idle state. This is required to allow correct reading of the MFP's copy page counters.

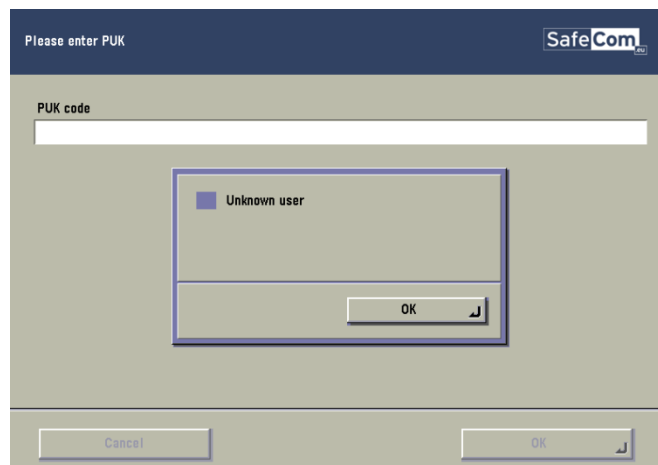
Register card

There are two ways the user can register a card while standing at the device:

- **Register card by entering an 8-digit PUK code**
The PUK code must be supplied to the user in advance, typically via e-mail.
- **Register card by entering Windows user logon, password and domain**
The user must have a network logon and the **Login method** must include a card.

Register card with PUK code

1. Use card reader. If the card is unknown and there is an available PUK code in the SafeCom system, the user is asked to enter his PUK code.



2. Enter **PUK code** on the keypad or touch screen.
3. Tap **PIN code** and enter **PIN code** on the keypad or touch screen.
4. Tap **PIN** again and enter **PIN code** on the keypad or touch screen.
5. Tap **OK** (or press the **ID** button).

The card is now registered with the user.

Register card with Windows logon

1. Use card reader.
 - If there are any available PUK codes on the system tap **Cancel** in the **Please enter PUK** dialog. The **Login to register card** dialog appears.
 - If there are no available PUK codes the user gets the **Login to register card** dialog. To stop the registration of the card, tap **Cancel** in this dialog.

Login to register card

SafeCom

User name

Password

Domain

safecom.local

Cancel

OK

2. Tap **User name** and enter **User name** on the touch screen. Tap **OK**.
3. Tap **Password** and enter **Password** on the touch screen. Tap **OK**.
4. Tap **Domain** and enter **Domain** on the touch screen. Tap **OK**.
5. Tap **OK** (or press the **ID** button).

Note The User name and Password fields cannot be left blank.

Troubleshooting

SafeCom Go Canon device trace facility

Use the **Mail to SafeCom Support** button on the SafeCom Go Canon [Information web page](#) to collect information from the device.

The SafeCom Go Canon log facility is also useful in troubleshooting situations, but it should only be enabled upon request from SafeCom support personnel. The log facility is enabled on the SafeCom Go Canon [Log web page](#).

SafeCom Help Desk Assistant

We want your SafeCom solution to be one that reduces not only print costs but is also easy to support. The most common problems reported by end users have been compiled into an online **SafeCom Help Desk Assistant** available at https://knowledge.kofax.com/General_Support.

SafeCom scan jobs not tracked

If SafeCom scan jobs are not tracked check the device's settings on the Canon imageRunner Advance webpage. Go to the **Settings\Registration** page, click **Management Settings** and then **Device Management**. Find the **Display Log** and make sure that Display Job Log is selected.

Cannot login to MEAP web page

On the iRA-33xx family, you will not be able to log in to the MEAP web page of the device after you set up SafeCom as authentication mode. To access the MEAP web page of the device, set the device to **Safe** mode. For instructions on how to enable **Safe** mode on your Canon device, consult your Canon device guide or contact your Canon reseller.

Regulatory information

WARNING NOTE: This equipment has been tested and found to comply with the limits for a Class A digital device, pursuant to part 15 of the FCC Rules. These limits are designed to provide reasonable protection against harmful interference in a residential installation.

This equipment generates, uses and can radiate radio frequency energy and, if not installed and used in accordance with the instructions, may cause harmful interference to radio communications. However, there is no guarantee that interference will not occur in a particular installation. If this equipment does cause harmful interference to radio or television reception, which can be determined by turning the equipment off and on, the user is encouraged to try to correct the interference by one or more of the following measures

- Reorient or relocate the receiving antenna.
- Increase the separation between the equipment and receiver.
 - Connect the equipment into an outlet on a circuit different from that to which the receiver is connected.
- Consult the dealer or an experienced radio/TV technician for help.

CAUTION: Changes or modifications not expressly approved by SafeCom a/s could void the user's authority to operate this equipment according to part 15 of the FCC rules. This equipment generates, uses, and can radiate radio frequency energy and if not installed and used in accordance with the instruction guide, may cause interference to radio communications. It has been tested and found to comply with the limits for a Class A computing device pursuant to Subpart B of Part 15 of FCC Rules, which are designed to provide reasonable protection against such interference when operated in a commercial environment. Operation of this equipment in a residential area is likely to cause interference in which case the user will be required to take whatever measures may be required to correct the interference at his own expense.

CE conformance: This product has been developed and produced in accordance with the EMC directive and the Low Voltage directive and therefore carries the CE mark.

EMC directive: This product observes the rules and regulations of the EMC directive. If so required, a declaration of conformity in local language stipulating the applied rules and regulations can be obtained.