

Kofax eFLOW Control and Resolve Installation and Setup Guide

Version: 5.2.x

Date: 2020-09-23

The KOFAX logo is displayed in a bold, blue, sans-serif font. The letters are thick and closely spaced, with a slight shadow effect on the right side of the letters, giving it a three-dimensional appearance.

© 2015-2020 Kofax. All rights reserved.

Kofax is a trademark of Kofax, Inc., registered in the U.S. and/or other countries. All other trademarks are the property of their respective owners. No part of this publication may be reproduced, stored, or transmitted in any form without the prior written permission of Kofax.

Table of Contents

About eFLOW Control and Resolve	5
About this guide	6
Installation	7
Transport requests	7
Prerequisites	7
Preparation	10
Installation.....	10
Follow-up steps	15
Language support.....	15
Useful SAP Notes	15
Web Application installation	16
System requirements.....	16
Web server.....	16
Clients	16
Prerequisites.....	16
Deploy the Web Application	17
Post installation tasks	20
Fiori App activation.....	21
SAP Fiori front-end system settings	21
SAP Fiori front-end web interface settings	24
Activate Business Configuration sets	29
Activate BC sets	29
Settings included in the BC sets.....	31
/TISA/SAP_ARCHIVELINK.....	32
/TISA/SAP_S_TABU_DIS.....	33
/TISA/FW_CUST.....	33
/TISA/AP_CUST	33
/TISA/WF_CUST.....	35
Activate SAP workflow integration	37
Authorizations	40
Authorization objects	40
Authorization object /TISA/AP (Document access)	40
Authorization object /TISA/CMD (User interface access).....	41

Authorization object /TISA/REP (eFLOW Reporting access)	43
Connection between functionality and authorization object.....	45
Roles.....	48
eFLOW Administration user.....	48
eFLOW Administration II (application level) user	48
eFLOW Control normal user.....	49
eFLOW Control normal user without Park function	51
eFLOW Control normal user Display only	52
eFLOW Control Accrual Report user	54
eFLOW Control super user	54
eFLOW Resolve user.....	55
eFLOW Resolve user with SSO	57
eFLOW Reporting user for all reports.....	57
eFLOW Reporting user for non user-specific reports	57
eFLOW Reporting user for user-specific reports	58
RFC user for external communication	59
eFLOW email approval user	63
Additional SAP authorizations	63
Additional SAP authorizations to existing roles	63
Additional SAP authorizations from existing roles	64
Known issues	66
Short dump No RFC authorization.....	66
Short dump PERMISSION_FAILURE	67

About eFLOW Control and Resolve

TIS eFLOW Control and eFLOW Resolve are SAP add-ons for automated invoice processing, seamlessly integrated into your SAP ERP system to provide a common look and feel for the end user and a familiar technical foundation for staff supporting the application. In combination, the two components deliver a highly automated workflow solution for vendor invoice processing that handles requirements such as automatic posting, automatic line item matching, and automatic workflow routing for exception handling and approval.

About this guide

This guide explains how to install eFLOW Control and eFLOW Resolve and describes other tasks required to get the application up and running.

For information on configuration, see the *eFLOW Control and Resolve Configuration Guide*.

For information on administrative tasks, see the *eFLOW Control and Resolve Administration Guide*.

For information on using eFLOW Control and eFLOW Resolve, see the following guides:

- *eFLOW Control User Guide*
- *eFLOW Resolve SAP User Guide*
- *eFLOW Resolve Web Application User Guide*
- *eFLOW Resolve Fiori App User Guide*

Installation

eFLOW Control and eFLOW Resolve require SAP ECC 6.0. The applications can be installed using the SAP Transport Management System (transaction STMS). The latest SAP GUI for the SAP version that is used must be installed on the eFLOW Server.

eFLOW Control and eFLOW Resolve reside in the /TISA/ namespace. The namespace is created during the installation.

The current release is eFLOW Control and Resolve 5.2 Service Pack 6. The installation is an update to eFLOW AP for SAP 5.2 SP4. However, the improvements of SP2 and SP3 are also included in this service pack, which means that new customers must first install eFLOW Control and Resolve 5.2 SP2 and then install eFLOW Control and Resolve 5.2.6.

Transport requests

Install the appropriate request for your SAP product.

SAP release	Request
ECC6, EhP 3 & 4	KofaxeFlowAPforSAP-5.2.6_For_SAP_EHP3-4.zip
ECC6, EhP 5 & 6	KofaxeFlowAPforSAP-5.2.6_For_SAP_EHP5-6.zip
ECC6, EhP 7 & 8	KofaxeFlowAPforSAP-5.2.6_For_SAP_EHP7-8.zip
S/4HANA (all versions)	KofaxeFlowAPforSAP-5.2.6_For_SAP_EHP7-8.zip

Prerequisites

- Current kernel, tp, and R3trans

Verify that the current versions of the kernel, tp, and R3trans are in your system.

- Current SPAM/SAINT update

Verify that you have imported the latest SPAM/SAINT update into your system. To do this, compare the short text of the last imported SPAM/SAINT update with the short text of the SPAM/SAINT update in SAP Support Portal. If you find a newer version of the SPAM/SAINT update in SAP Support Portal, import it. You can find more information about SPAM/SAINT in SAP Help Portal under

<https://help.sap.com/spmanager>.

- Before the installation, read the following SAP Notes or other documentation:

SAP note	Severity	Title
2050	Info	R3trans: data file destroyed
2126513	Info	Using transports for delivery
1688610	Info	TMS import queue warning message : 'Does not match component version' or 'Checking components of the requests'
1742547		Information about component version check in TMS
66971	Info	Supported SAP GUI platforms
147519	Info	Maintenance strategy / deadlines for SAP GUI
		SAP GUI
2309640	Info	How to disable the Wide Layout Modus using SAP Screen Personas
2211952	Mandatory	SAP GUI for Windows: Error CL_GUI_DATAMANAGER=====CP with table controls
		SAP_APPL
1694508	Mandatory	BAPI: Simulation using BAPI_INCOMINGINVOICE_CREATE
2266357	Recommended	BAPI: Check of the payee/payer (EMPFB)
2291643	Recommended	MIRO: Error message missing in error log

- Check whether the following prerequisites are met in your system.

Component	Version
SPAM/SAINT	0053 or higher
SAP_BASIS	702 or higher
SAP_APPL	605 or higher
SAP_FIN	All versions

- Prerequisite software components:
eFLOW AP is compatible with “Financials” and “SAP Simple Finance Add-On 1.0”.
- Prerequisite support packages:

Component	Release	Support Package level minimum	Includes all recommended/mandatory SAP notes
SAP_BASIS	702	0006	
SAP_BASIS	740	0009	
SAP_APPL	605	0003	SAPKH60515
SAP_APPL	606		SAPKH60617
SAP_APPL	616		SAPKH61610
SAP_APPL	617	0007	SAPKH61712
SAP_APPL	618		SAPK-61802INSAPAPPL
S4CORE	100		SAPK-10002INS4CORE

- Minimum version of SAP GUI Front-End:

Software Component	Support Package	Patch Level
SAP GUI FOR WINDOWS 7.40 CORE	SP007	000007
SAP GUI FOR WINDOWS 7.50 CORE	0000	

This minimum version is required due to SAP note 2211952.

- Minimum version of SAP Netweaver Business Client (if in use):

Software Component	Patch Level
SAP BUSINESS CLIENT 6.0	11
SAP BUSINESS CLIENT 6.5	

- Additional information about the installation:

Name	Value
Space required in the transport directory	15 MB
Net runtime	15 minutes

Preparation

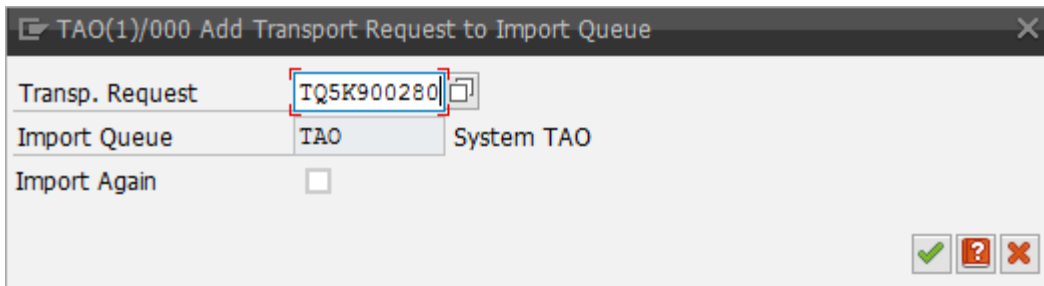
2. Import the required user languages for all installed components. Perform this language transport before the upgrade or installation of eFLOW AP.
3. Load the request into your Transport Management System (see SAP note 2050 R3trans: data file destroyed for file transfer via FTP).

Installation

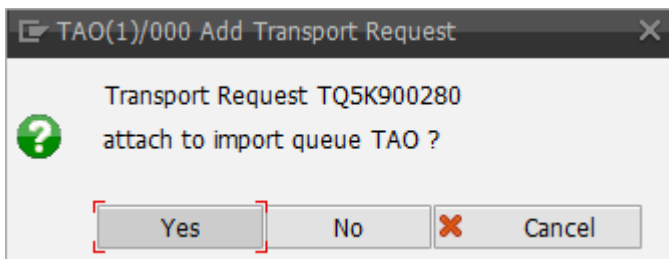
1. Log on to client 000 in your SAP system as a user with SAP_ALL rights.

Note Do not log on with the use SAP* or DDIC.

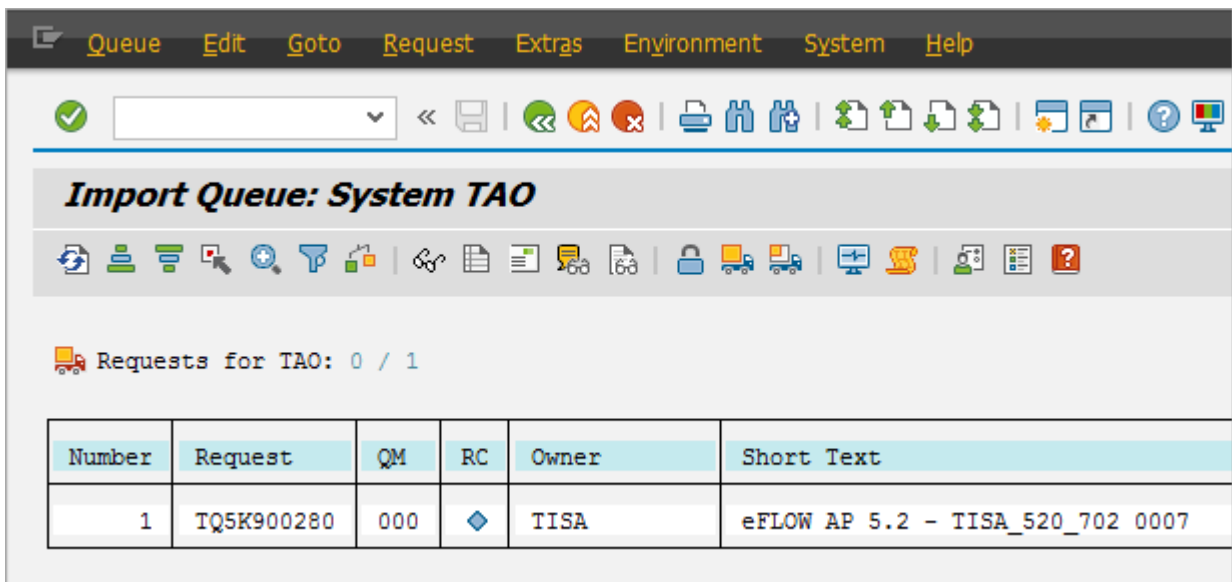
2. Open the Transport Management System (transaction STMS).
3. Select the menu item **Extras > Other requests > Add** to add the request to the import queue.
4. Enter the request number.




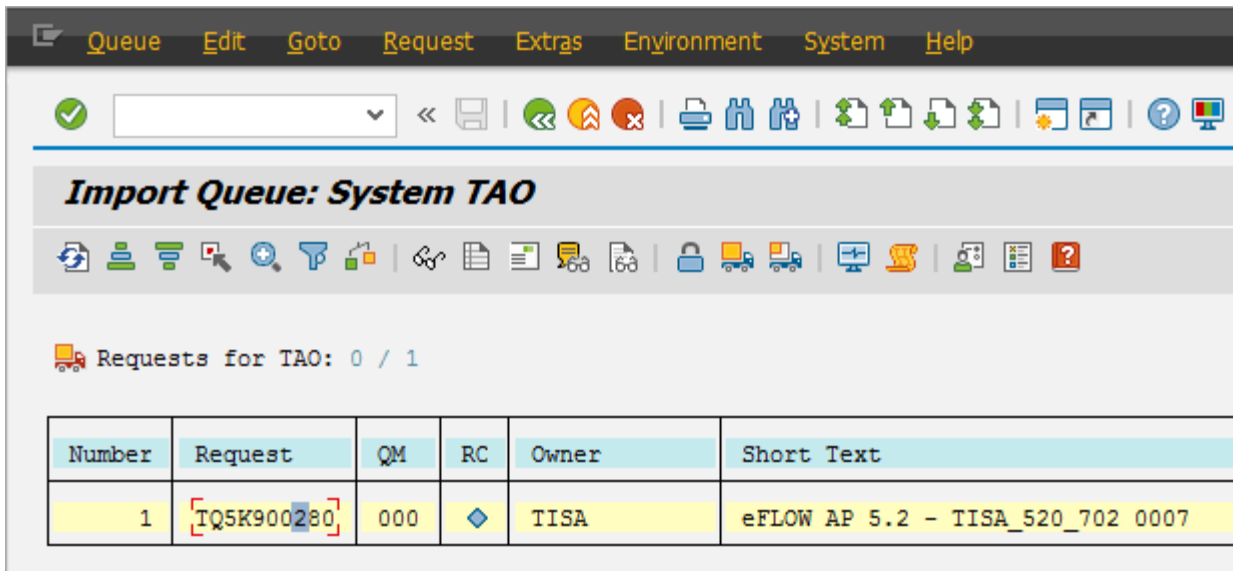
5. Click the **Yes** button.



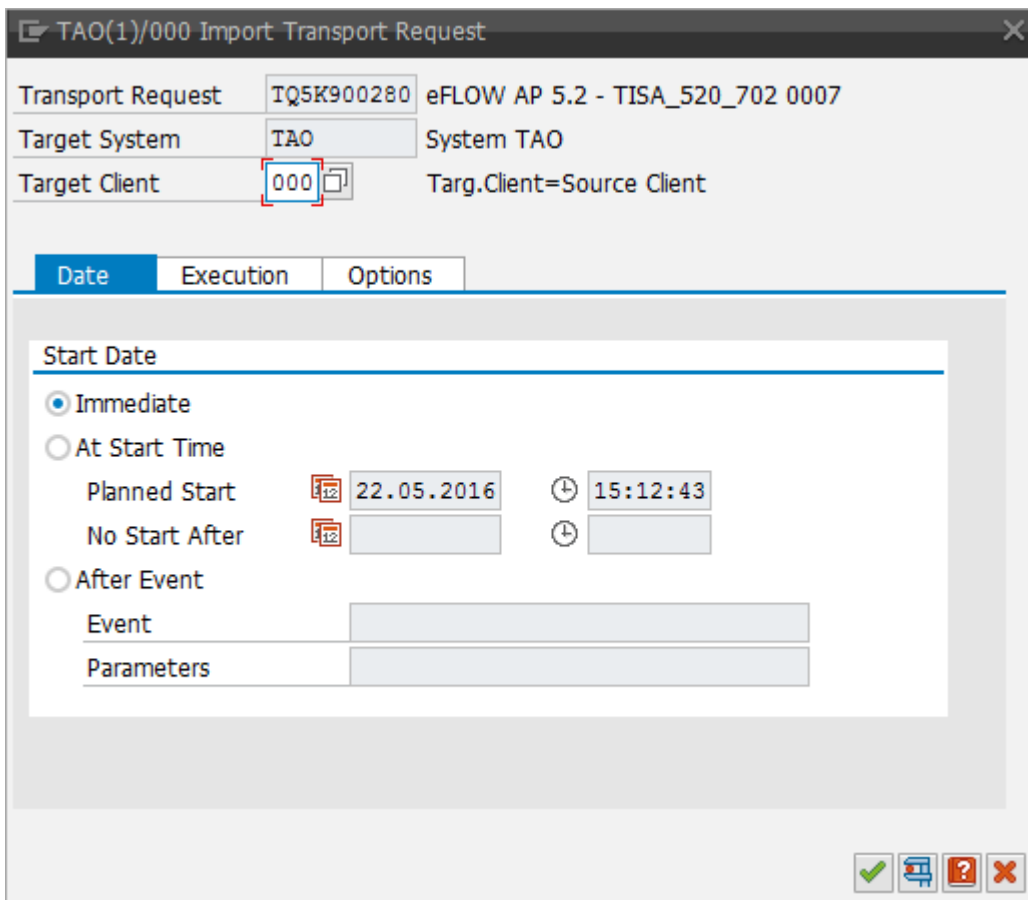
The request is now added to the import queue.



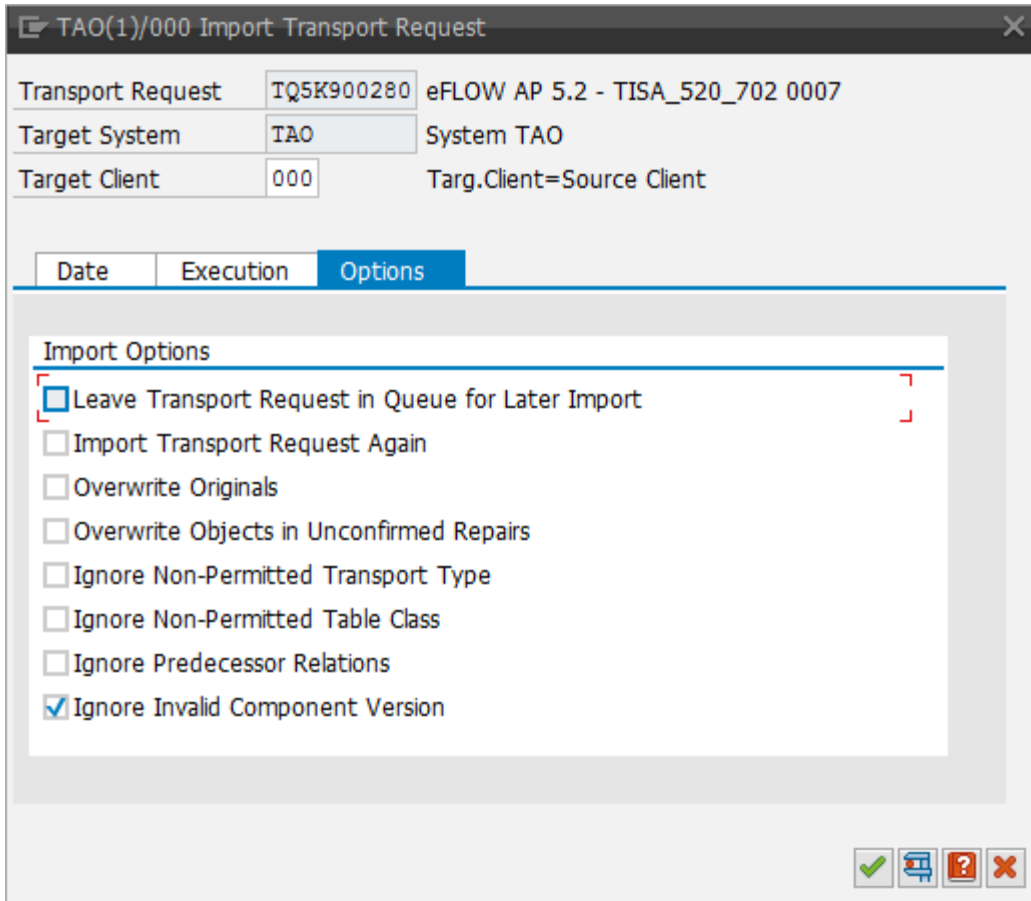
6. Select the request by pressing F9 and clicking the **Import** button .



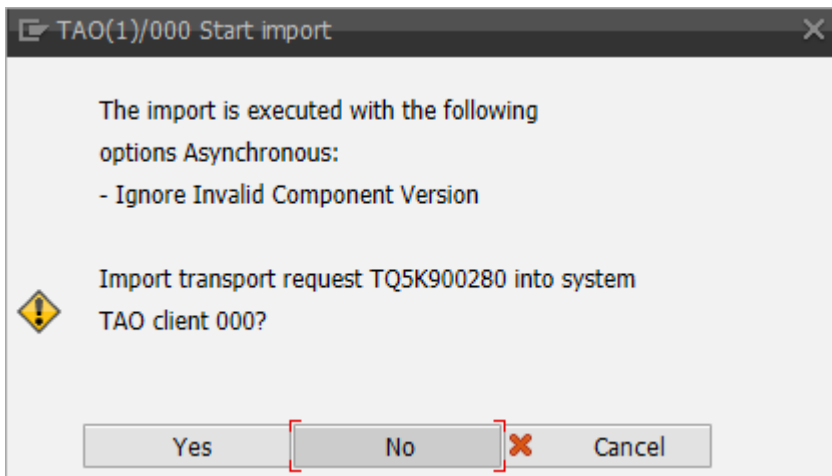
The request contains no client-specific customization.



7. Activate **[X] Ignore Invalid Component Version** (see SAP notes 1688610 and 1742547).

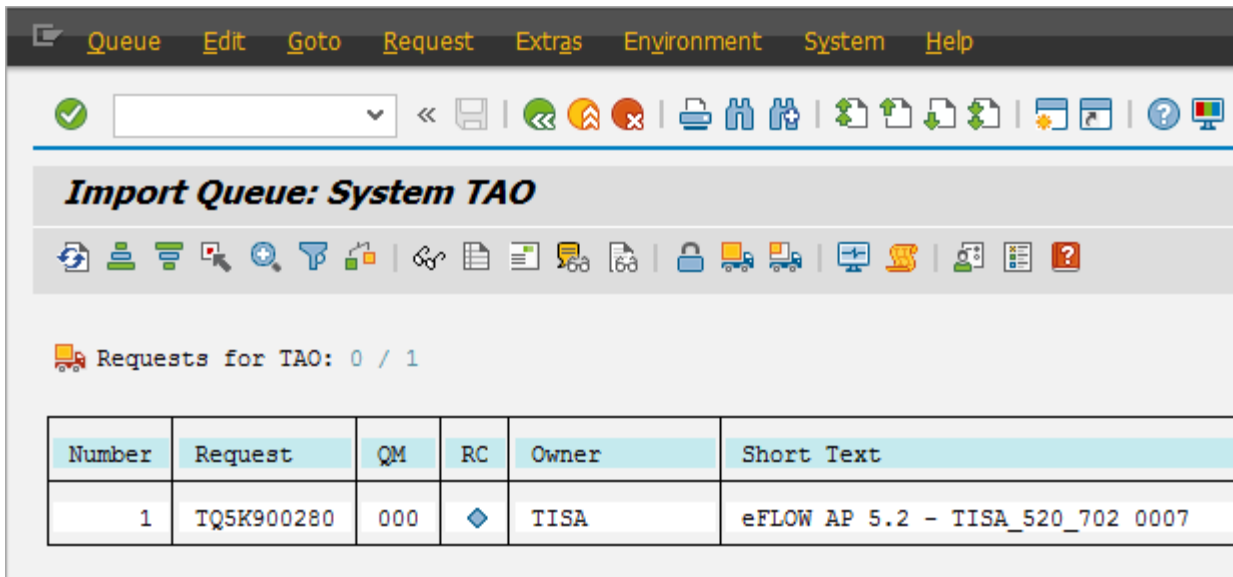


8. Click the **Yes** button to start the import process.

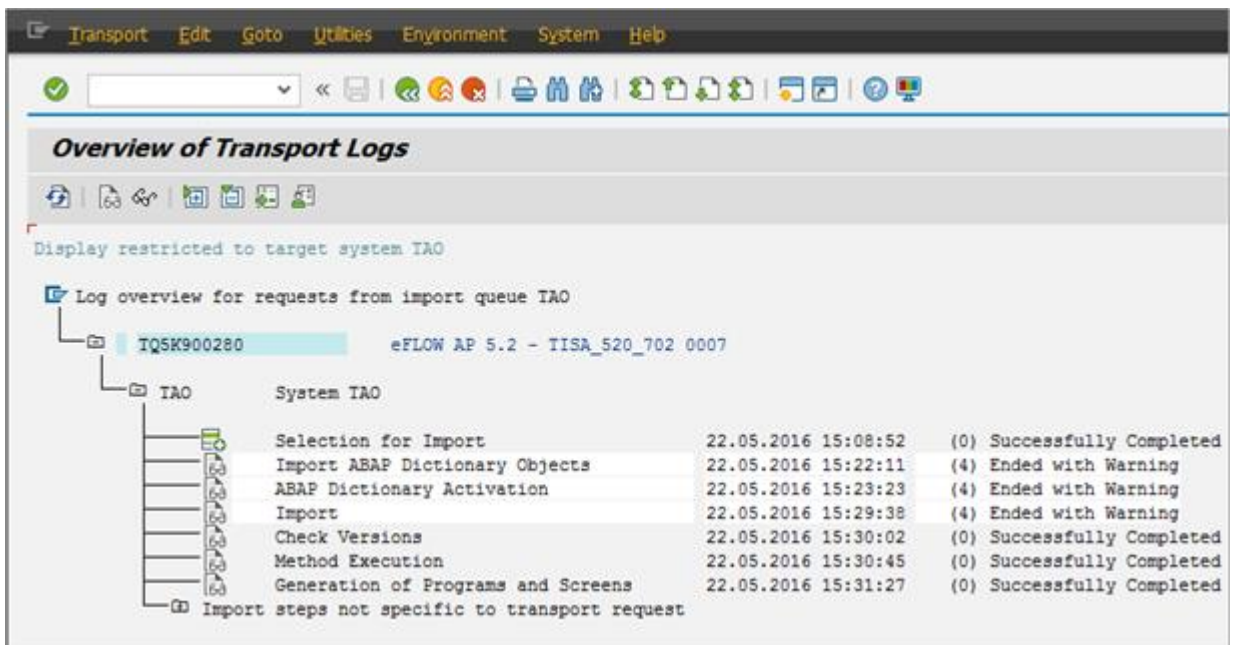


The import starts.

9. Click the **Logs**  button to display the import logs.



The import finishes with warnings.



10. The request is imported with RC = 4 ▲.

Web Application installation

This topic explains how to deploy the eFLOW Resolve Web Application and connect it to an SAP system.

The eFLOW Resolve Web Application deployment package is installed using [Microsoft Web Deploy](#).

Check the system requirements and prerequisites before you begin deployment.

System requirements

Web server

- Windows Server 2012 R2 or later
- Internet Information Services (IIS) for Windows
- .NET 4.6 framework
- Microsoft Visual C++ 2010 Redistributable Package
- Microsoft Web Deploy. You can download Web Deploy from the Microsoft website: <https://www.iis.net/downloads/microsoft/web-deploy>.
- 4 GB RAM minimum; 16 GB RAM recommended
- 2 cores minimum; 8 cores recommended

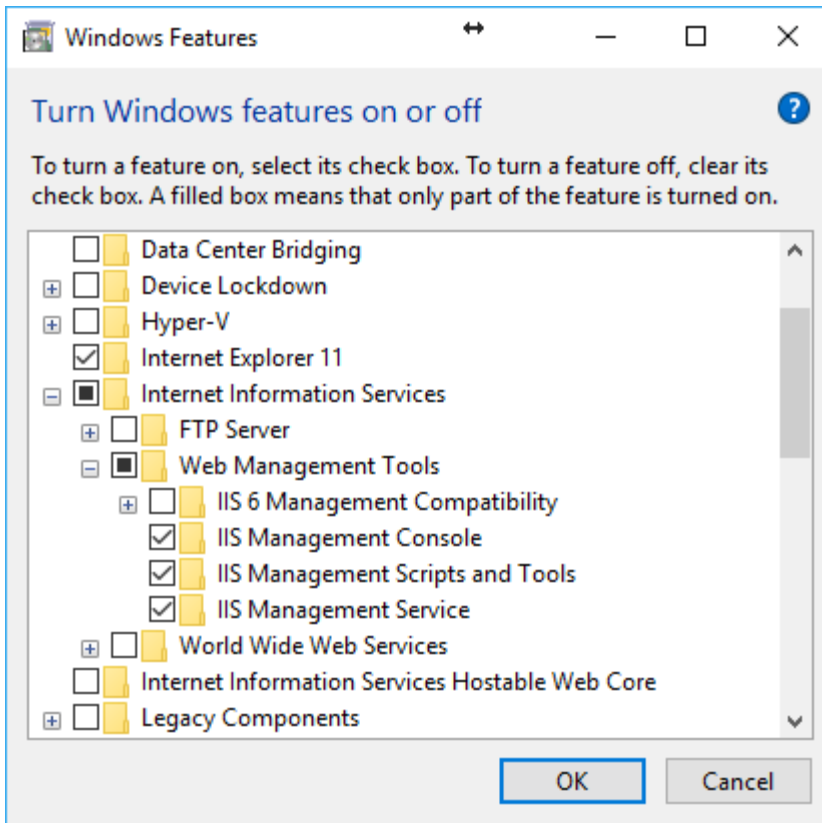
Clients

Client PCs must be capable of running a modern browser. Currently Internet Explorer 11 and the latest version of Chrome are supported.

Prerequisites

- Web Deploy is installed. See <https://docs.microsoft.com/en-us/iis/install/installing-publishing-technologies/installing-and-configuring-web-deploy> for information on how to install Web Deploy. Perform a **Complete** installation of Web Deploy.

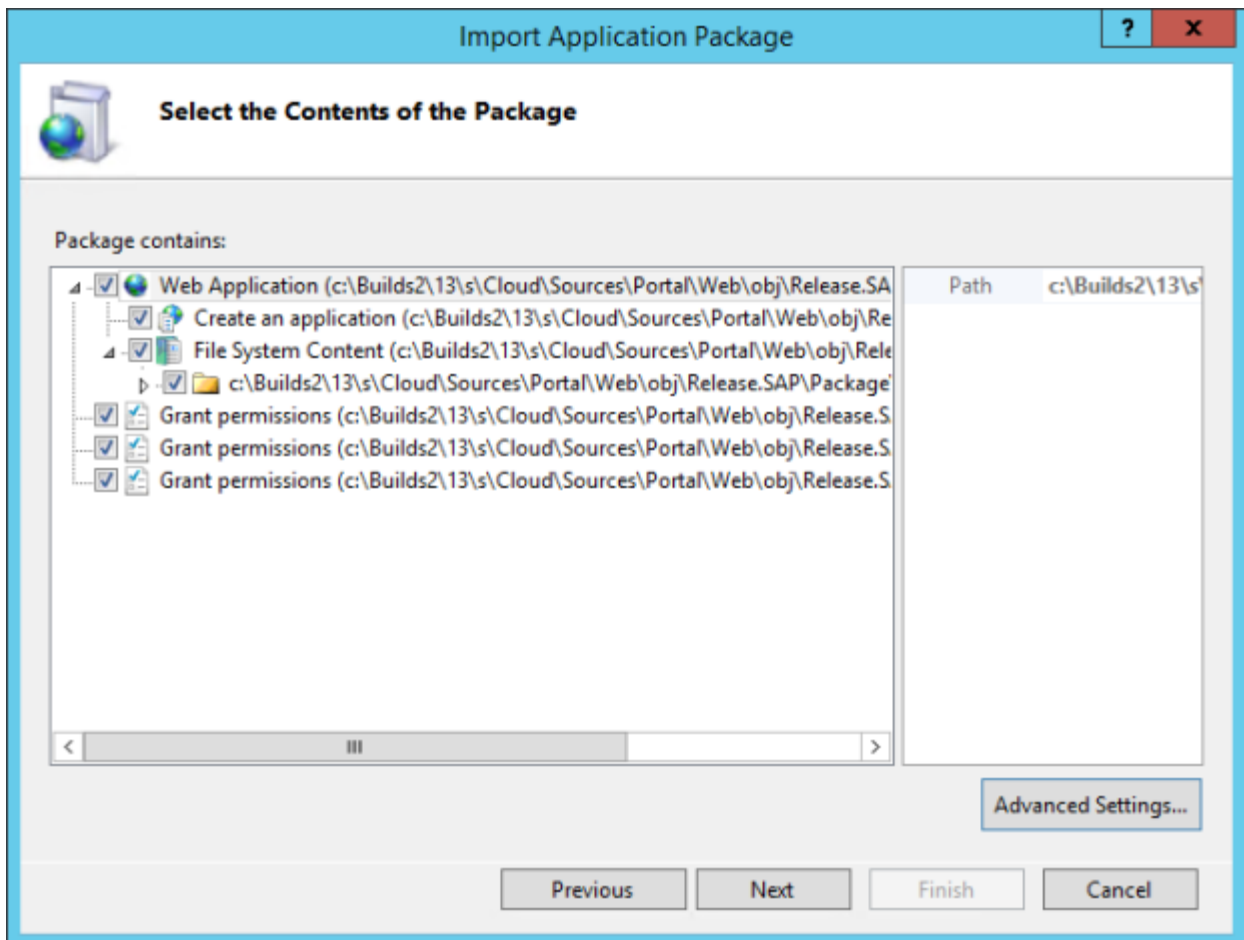
Before installing Web Deploy, make sure that the Windows features **IIS Management Console**, **IIS Management Scripts and Tools**, and **IIS Management Service** are activated.



- The eFLOW Control and Resolve application has been installed in your SAP system (see [eFLOW Control and Resolve installation](#)).
- An RFC user has been created for data transfer between the Web Application and the SAP system.
- If you use SAP Single Sign On (SSO) and the MYSAPSSO2 cookie is not already activated on users' computers, you must define a URL in the eFLOW Resolve configuration that redirects to the Web Application with a MYSAPSSO2 cookie. See the *Kofax eFLOW Control and Resolve Configuration Guide* for more information.
- To display PDFs in the Web Application, GhostScript.net must be installed on the same web server as the Web Application. You can download it from https://ghostscript.com/Ghostscript_9.18.html. For a 64 bit operating system, download the 64 bit version.

Deploy the Web Application

1. Open IIS.
2. Right-click on the site to which you want to deploy the eFLOW Resolve Web Application and select the menu item **Deploy > Import Application**.
3. Browse to and select the eFLOW Resolve Web Application deployment package `TiS.Cloud.Portal.Server.Web.zip`, then click **Open**.
4. Click **Next**.
5. Make sure all package contents are selected, then click **Next**.



6. In the **Enter Application Package Information** screen, enter the following details, then click **Next**.

Import Application Package

Enter Application Package Information

Enter information that is required to install this package:

Application Path
Full site path where you want to install your application (for example, Default Web Site/Application).
Default Web Site/

Authentication Type
Supported values are SAP, SAP_SSO, SAP_SSO_ASSERT.

SAP Destination

Sap Sso Login Page

Sap Sso Logoff Page

Field	Description
Application path	Full site path where you want to install the Web Application, for example, Default Web Site/eFLOW Resolve.
Authentication type	<p>Specifies how users authenticate to your SAP system. Use one of the following values.</p> <p>SAP: Users must enter their user name and password in the eFLOW Resolve Web Application login screen.</p> <p>SAP_SSO: Users do not need to enter login credentials; authentication takes place via the MYSAPSSO2 cookie.</p> <p>SAP_ASSERT: Users do not need to enter login credentials; authentication takes place via the MYSAPSSO2 cookie. Choose this authentication method if an assertion ticket is used. See the SAP documentation for more information on assertion tickets.</p>

Field	Description
SAP Destination	<p>The connection details for your SAP system.</p> <pre>{"DESC" : "[SAP system name]" , ASHOST : "/H/[Host]/S/[Port]/W/[SAP router password]/H/[Server]" CLIENT="[SAP client ID]" LANG="[SAP system language]" SYSNR="[SAP system number]" USER="[eFLOW RFC user]" PASSWORD="[RFC user password]"}</pre>
SAP SSO Login Page SAP SSO Logoff Page	<p>The redirect URL that sets the MYSAPSSO2 cookie. This is only required if the MYSAPSSO2 cookie is not already set on users' computers. You can activate this redirect as a BSP page in the eFLOW Resolve configuration. . See the <i>Kofax eFLOW Control and Resolve Configuration Guide</i> for more information.</p> <pre>http://[Server name]:[Port]/sap/bc/bsp/sap/tisa/eflow/redirect.htm?sap- client=[SAP client ID]&sap-language=[SAP system language] http://[Server name]:[Port]/sap/public/bc/icf/logoff</pre>

7. A progress bar is displayed while the application is installed. When the package has been successfully installed, click **Finish**.
8. To connect to the Web Application, right-click on the application in IIS and select the menu item **Manage Application > Browse**.

Post installation tasks

- Specify the Web Application URL for the SAP system in the eFLOW Control and Resolve IMG. See the *SAP system settings* section in the *eFLOW Control and Resolve Configuration Guide* for more information.
- Specify which attachment types users may upload in the eFLOW Resolve Web Application. See the *Web Application settings* section in the *eFLOW Control and Resolve Configuration Guide* for more information.

Fiori App activation

This section explains how to activate the eFLOW Resolve Fiori App.

SAP Fiori front-end system settings

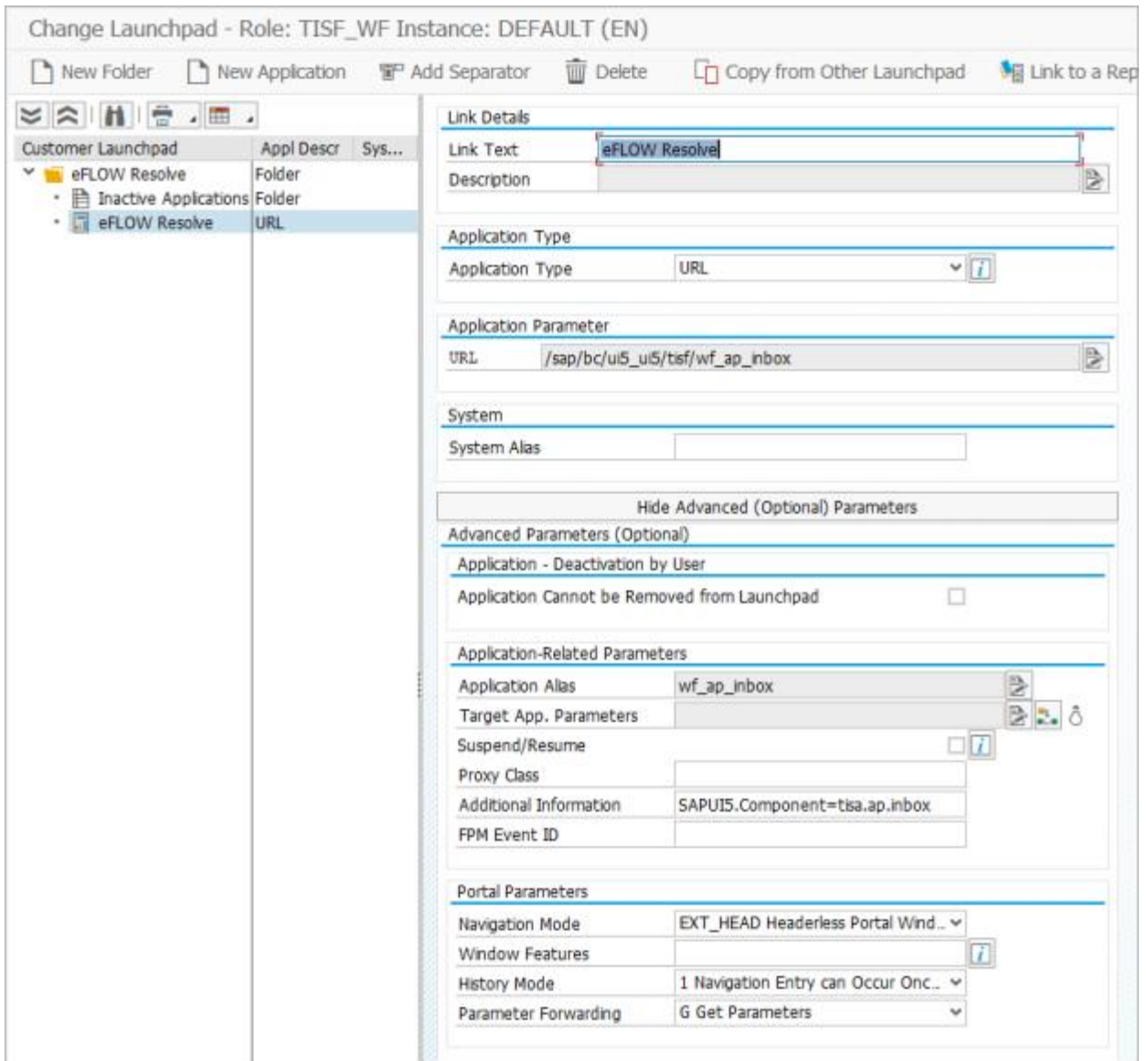
1. In transaction /UI2/SEM OBJ, make sure that the semantic object TISA_AP **TIS eFLOW AP document** exists (client-independent).

Semantic Objects - Customer View		
Semantic Object	Semantic Object Name	Semantic Object Description
TISA_AP	tisa_ap	TIS eFLOW AP Document

2. In transaction LPD_CUST, make sure that the Launchpad role TISF_WF and its applications exist.

Overview of Launchpads														
Role	Instance	Description	Re...	Em...	FP...	Change	Display	Delete	Copy	Transp...	Alias M...	Transla...	User	Date
TISF_WF	DEFAULT	eFLOW Resolve											KRAICZY	12.09.2017

The **Instance** should be DEFAULT.



The role should have the following application. Double-click on the role name to view this application.

Field	Value
Link Text	eFLOW Resolve
Application Category	URL
URL	/sap/bc/ui5_ui5/tisf/wf_ap_inbox

Field	Value
Application Alias	wf_ap_inbox
Additional Information	SAPUI5.Component=tisa.ap.inbox

- In transaction /IWFND/MAINT_SERVICES, activate the OData Service.

The screenshot shows the 'Activate and Maintain Services' interface. The 'Service Catalog' table contains the following data:

Type	Technical Service Name	Service Description	External Service Name	Nsp.	OAu...	Soft State	Mode
BEP	ZTISA_WF_IF_ODATA_AP_SRV	1 Workflow Odata Service AP Data	WF_IF_ODATA_AP_SRV	/TISA/	<input type="checkbox"/>	Not Supported	Routing-based

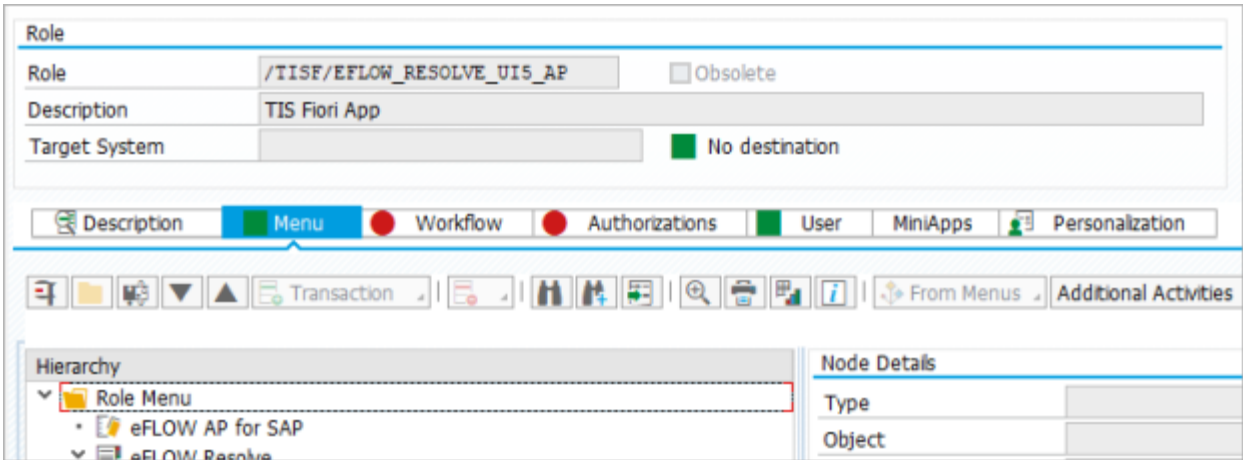
The 'System Aliases' section shows the following data:

SAP System Alias	Description	Default	Metadata	User Role
BACKEND	TIS Backend system	<input checked="" type="checkbox"/>	<input type="checkbox"/>	

- Make sure that there is an entry for the external service /TISA/WF_IF_ODATA_AP_SRV.
- The technical service name typically lies within the customer's Z namespace.
- The service must be connected to the SAP back-end system in the **System Aliases** section.

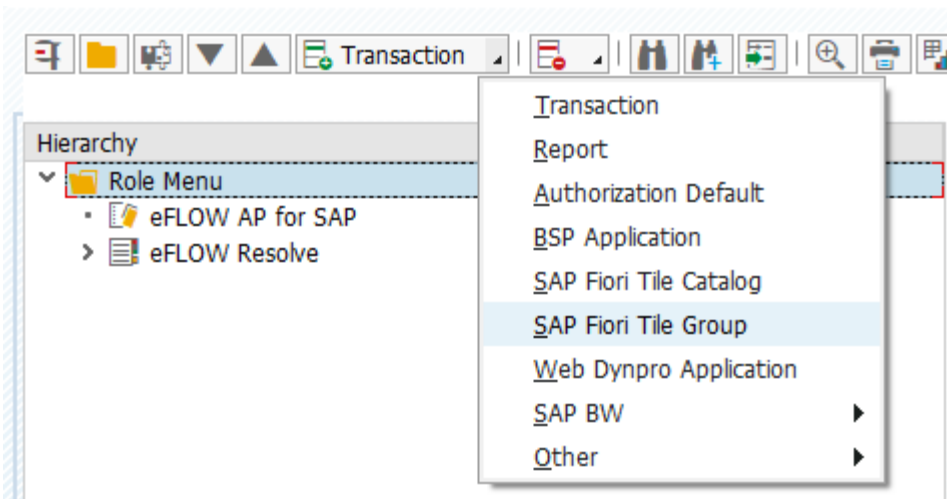
If the service does not exist, add it:

- Click the **Add Service** button.
 - In the **Add Selected Services** screen, click **Get Services**.
 - Select the /TISA/WF_IF_ODATA_AP_SRV service and click the **Add Selected Services** button.
- Make sure the role /TISF/EFLOW_RESOLVE_UI5_AP exists and is assigned to users in transaction PFCG.



Fiori authorizations are done via the role menu, not via the actual authorization objects.

To manually add the Fiori authorizations, use the SAP Fiori **Tile Catalog** and/or the SAP Fiori **Tile Group** option.



- SAP Fiori Tile Catalog: /TISF/WF_DISPLAY
- SAP Fiori Tile Group: /TISF/WF_DISPLAY

If these options do not exist, follow the instructions in the *SAP Fiori front-end web interface settings* section, then return to this step and try again.

SAP Fiori front-end web interface settings

The URL to the Fiori Admin Web Interface is typically:

https://<FrontendSystemHost>:<Port>/sap/bc/ui5_ui5/sap/arsvc_upb_admn/main.html

1. Make sure the following tile exists, typically in the catalog /TISF/WF_DISPLAY.

Configure: 'eFLOW Resolve' Instance ID: 003N7K9P180RQ794SK3MQTK1H

General

Title: eFLOW Resolve

Subtitle: Access eFLOW Resolve documents in Fiori

Keywords: AP, Invoice, eFLOW Resolve, Workflow Inbox

Icon: sap-icon://payment-approval

Information:

Navigation

Use semantic object navigation:

Semantic Object: TISA_AP

Action: display

Parameters:

Target URL: #TISA_AP-display

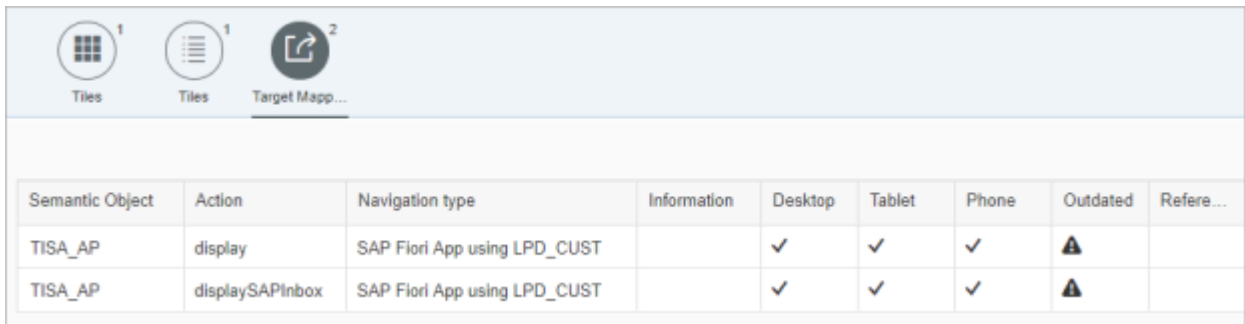
Tile Actions

<input type="checkbox"/>	Menu Item	Target T...	Navigation Target	Action	Icon
<input type="checkbox"/>		URL			sap-i...

Save Cancel

Field	Value
Title	eFLOW Resolve
Subtitle	Access eFLOW Resolve documents in Fiori
Keywords	AP, Invoice, eFLOW Resolve, Workflow Inbox
Icon	sap-icon://payment-approval
Use semantic object navigation	Yes
Semantic Object	TISA_AP
Action	display

2. Make sure there are the following target mappings in the same catalog as the tile:



Semantic Object	Action	Navigation type	Information	Desktop	Tablet	Phone	Outdated	Refere...
TISA_AP	display	SAP Fiori App using LPD_CUST		✓	✓	✓	⚠	
TISA_AP	displaySAPInbox	SAP Fiori App using LPD_CUST		✓	✓	✓	⚠	

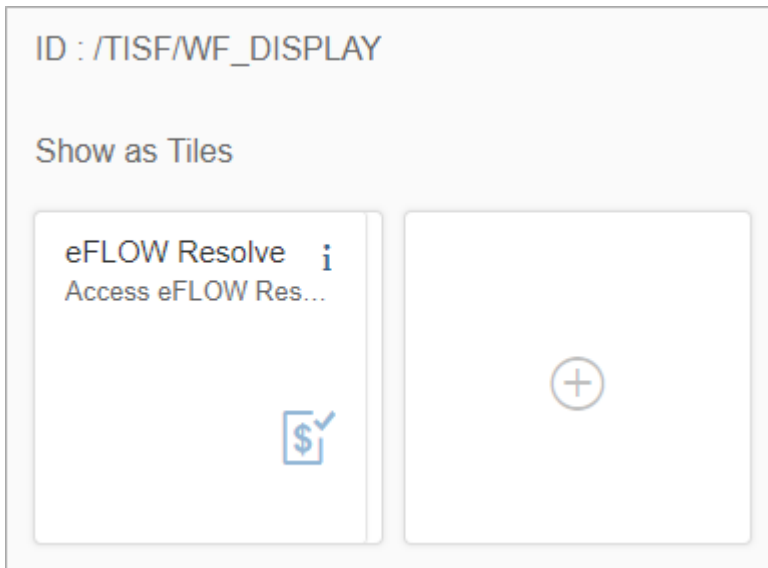
- For the regular eFLOW Resolve Fiori App:

Field	Value
Semantic Object	TISA_AP
Action	display
Application Type	SAP Fiori App using LPD_CUST
Launchpad Role	TISF_WF
Launchpad Instance	DEFAULT
Application Alias	wf_ap_inbox
Desktop	Yes
Tablet	Yes
Phone	Yes
Allow additional parameters	Yes

- For the SAP Inbox App integration:

Field	Value
Semantic Object	TISA_AP
Action	displaySAPinbox
Application Type	SAP Fiori App using LPD_CUST
Launchpad Role	TISF_WF
Launchpad Instance	DEFAULT
Application Alias	wf_ap_inbox
Desktop	Yes
Tablet	Yes
Phone	Yes
Parameter 1	Name: openMode Mandatory: Yes Value: replaceDetail
Parameter 2	Name: fwd Mandatory: No Value:
Allow additional parameters	Yes

3. Make sure the tile is assigned to a tile group, typically /TISF/WF_DISPLAY.

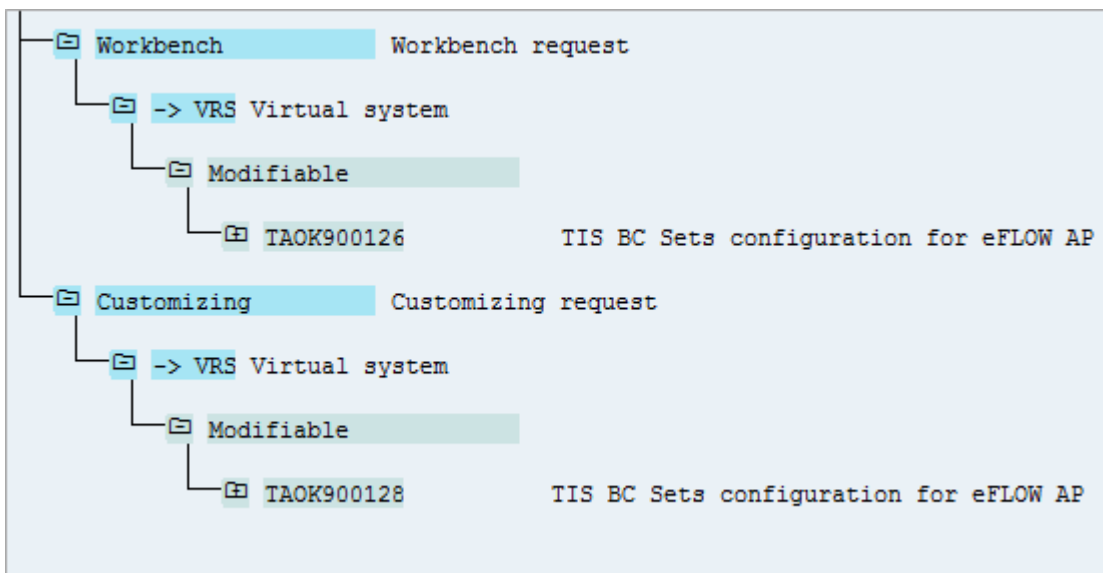


Activate Business Configuration sets

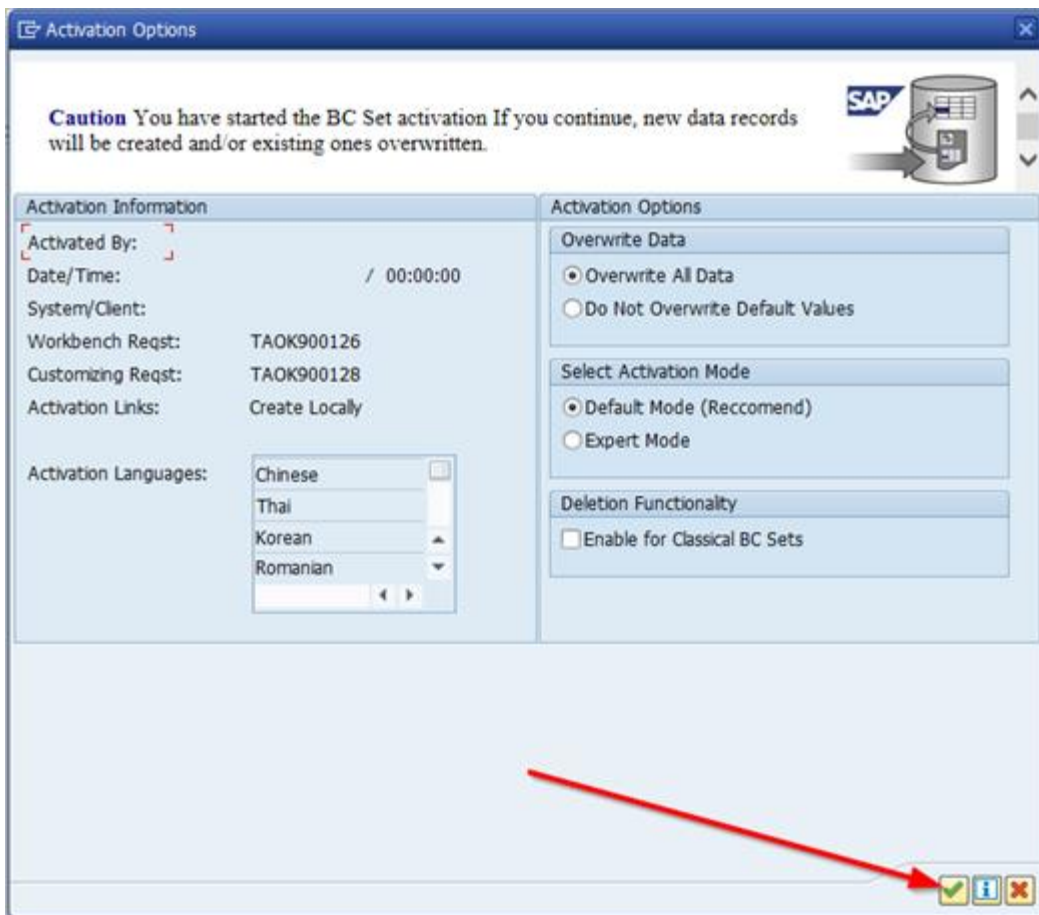
After installing eFLOW Control and Resolve, you should activate the TIS Business Configuration Sets to populate the eFLOW Control and Resolve customizing tables with the predefined, standard settings. After activation, you can adjust these settings, if necessary.

Activate BC sets

1. Create two transports on the customer system: one workbench request and one customizing request:



2. Go to transaction SCPR20.
3. Select the **BC Set /TISA/SAP_ARCHIVELINK**.
4. Select the menu item **BC Set > Activate**.
5. Assign your workbench request.
6. Assign your customizing request.
7. Enter your **Content Repository ID** and **Link table**.
8. Click the **Copy Values** button.



10. Repeat the above steps for the following BC sets.

Note You do not have to specify the content repository ID and link table for these BC sets.

- /TISA/SAP_S_TABU_DIS
- /TISA/FW_CUST
- /TISA/AP_CUST
- /TISA/WF_CUST

Settings included in the BC sets

The BC sets include the following standard settings. See the appropriate section of the documentation for detailed information on each setting.

/TISA/SAP_ARCHIVELINK

Setting	Details																																																												
SAP global document types and archive links	<p>Creates global document types required for eFLOW Control and Resolve attachments, or for technical reasons, and links them to the business object types /TISA/AP, BKPF, and BUS2081, where this is required. You are prompted to enter a content repository ID and link table when you activate the BC set.</p> <table border="1" data-bbox="380 600 1203 1682"> <thead> <tr> <th colspan="3" data-bbox="380 600 1203 657">Global document types</th> </tr> <tr> <th data-bbox="380 657 591 709">Document t...</th> <th data-bbox="591 657 1019 709">Description</th> <th data-bbox="1019 657 1203 709">Document Class</th> </tr> </thead> <tbody> <tr> <td data-bbox="380 709 591 762">/TISA/APPP</td> <td data-bbox="591 709 1019 762">Invoice image (PDF)</td> <td data-bbox="1019 709 1203 762">PDF</td> </tr> <tr> <td data-bbox="380 762 591 814">/TISA/APPT</td> <td data-bbox="591 762 1019 814">Invoice image (TIF)</td> <td data-bbox="1019 762 1203 814">TIF</td> </tr> <tr> <td data-bbox="380 814 591 867">/TISA/APSF</td> <td data-bbox="591 814 1019 867">Rendered invoice image (PDF)</td> <td data-bbox="1019 814 1203 867">PDF</td> </tr> <tr> <td data-bbox="380 867 591 919">/TISA/CSV</td> <td data-bbox="591 867 1019 919">Comma separated file (.csv)</td> <td data-bbox="1019 867 1203 919">TXT</td> </tr> <tr> <td data-bbox="380 919 591 972">/TISA/HTML</td> <td data-bbox="591 919 1019 972">Web document (.html)</td> <td data-bbox="1019 919 1203 972">HTM</td> </tr> <tr> <td data-bbox="380 972 591 1024">/TISA/JPG</td> <td data-bbox="591 972 1019 1024">Image (.jpg)</td> <td data-bbox="1019 972 1203 1024">JPG</td> </tr> <tr> <td data-bbox="380 1024 591 1077">/TISA/JSON</td> <td data-bbox="591 1024 1019 1077">JavaScript object (.json)</td> <td data-bbox="1019 1024 1203 1077">JSON</td> </tr> <tr> <td data-bbox="380 1077 591 1129">/TISA/MSG</td> <td data-bbox="591 1077 1019 1129">External communication</td> <td data-bbox="1019 1077 1203 1129">PDF</td> </tr> <tr> <td data-bbox="380 1129 591 1182">/TISA/OCRJ</td> <td data-bbox="591 1129 1019 1182">[TECHNICAL] Extract data (JSON)</td> <td data-bbox="1019 1129 1203 1182">JSON</td> </tr> <tr> <td data-bbox="380 1182 591 1234">/TISA/OCRP</td> <td data-bbox="591 1182 1019 1234">[TECHNICAL] Extract page files (PNG)</td> <td data-bbox="1019 1182 1203 1234">PNG</td> </tr> <tr> <td data-bbox="380 1234 591 1287">/TISA/PDF</td> <td data-bbox="591 1234 1019 1287">Adobe PDF (.pdf)</td> <td data-bbox="1019 1234 1203 1287">PDF</td> </tr> <tr> <td data-bbox="380 1287 591 1339">/TISA/PNG</td> <td data-bbox="591 1287 1019 1339">Image (.png)</td> <td data-bbox="1019 1287 1203 1339">PNG</td> </tr> <tr> <td data-bbox="380 1339 591 1392">/TISA/TIF</td> <td data-bbox="591 1339 1019 1392">Image (.tif)</td> <td data-bbox="1019 1339 1203 1392">TIF</td> </tr> <tr> <td data-bbox="380 1392 591 1444">/TISA/TXT</td> <td data-bbox="591 1392 1019 1444">Plain text document (.txt)</td> <td data-bbox="1019 1392 1203 1444">TXT</td> </tr> <tr> <td data-bbox="380 1444 591 1497">/TISA/WFAT</td> <td data-bbox="591 1444 1019 1497">Workflow Audit Trail</td> <td data-bbox="1019 1444 1203 1497">HTM</td> </tr> <tr> <td data-bbox="380 1497 591 1549">/TISA/XLS</td> <td data-bbox="591 1497 1019 1549">Excel document (.xls)</td> <td data-bbox="1019 1497 1203 1549">XLS</td> </tr> <tr> <td data-bbox="380 1549 591 1602">/TISA/XLSX</td> <td data-bbox="591 1549 1019 1602">Excel document (.xlsx)</td> <td data-bbox="1019 1549 1203 1602">XLSX</td> </tr> <tr> <td data-bbox="380 1602 591 1654">/TISA/XML</td> <td data-bbox="591 1602 1019 1654">[TECHNICAL] Information file (.xml)</td> <td data-bbox="1019 1602 1203 1654">XML</td> </tr> </tbody> </table>	Global document types			Document t...	Description	Document Class	/TISA/APPP	Invoice image (PDF)	PDF	/TISA/APPT	Invoice image (TIF)	TIF	/TISA/APSF	Rendered invoice image (PDF)	PDF	/TISA/CSV	Comma separated file (.csv)	TXT	/TISA/HTML	Web document (.html)	HTM	/TISA/JPG	Image (.jpg)	JPG	/TISA/JSON	JavaScript object (.json)	JSON	/TISA/MSG	External communication	PDF	/TISA/OCRJ	[TECHNICAL] Extract data (JSON)	JSON	/TISA/OCRP	[TECHNICAL] Extract page files (PNG)	PNG	/TISA/PDF	Adobe PDF (.pdf)	PDF	/TISA/PNG	Image (.png)	PNG	/TISA/TIF	Image (.tif)	TIF	/TISA/TXT	Plain text document (.txt)	TXT	/TISA/WFAT	Workflow Audit Trail	HTM	/TISA/XLS	Excel document (.xls)	XLS	/TISA/XLSX	Excel document (.xlsx)	XLSX	/TISA/XML	[TECHNICAL] Information file (.xml)	XML
Global document types																																																													
Document t...	Description	Document Class																																																											
/TISA/APPP	Invoice image (PDF)	PDF																																																											
/TISA/APPT	Invoice image (TIF)	TIF																																																											
/TISA/APSF	Rendered invoice image (PDF)	PDF																																																											
/TISA/CSV	Comma separated file (.csv)	TXT																																																											
/TISA/HTML	Web document (.html)	HTM																																																											
/TISA/JPG	Image (.jpg)	JPG																																																											
/TISA/JSON	JavaScript object (.json)	JSON																																																											
/TISA/MSG	External communication	PDF																																																											
/TISA/OCRJ	[TECHNICAL] Extract data (JSON)	JSON																																																											
/TISA/OCRP	[TECHNICAL] Extract page files (PNG)	PNG																																																											
/TISA/PDF	Adobe PDF (.pdf)	PDF																																																											
/TISA/PNG	Image (.png)	PNG																																																											
/TISA/TIF	Image (.tif)	TIF																																																											
/TISA/TXT	Plain text document (.txt)	TXT																																																											
/TISA/WFAT	Workflow Audit Trail	HTM																																																											
/TISA/XLS	Excel document (.xls)	XLS																																																											
/TISA/XLSX	Excel document (.xlsx)	XLSX																																																											
/TISA/XML	[TECHNICAL] Information file (.xml)	XML																																																											

/TISA/SAP_S_TABU_DIS

Setting	Details
Authorization groups for tables and views	Creates the authorization group /TIS in SE54. This group is required to provide access to eFLOW Control customizing tables and views for authorized users.

/TISA/FW_CUST

Setting	Details																				
Field statuses	<p>READ_ONLY: Allows no changes to the document.</p> <p>WF_FI_APP: Allows changes to the accounting details only. Applied in the FI completion & approval workflow.</p> <p>WF_NO_PO: Allows changes to the invoice items only. Applied in the Missing or wrong PO number workflow.</p> <p>WF_NO_VEND: Allows changes to the Vendor number header field only. Applied in the Missing vendor workflow.</p>																				
System message overwrites	<p>Replacement of system messages with other messages, for example, to replace technical SAP system messages with messages that are more understandable to eFLOW Control and Resolve users.</p> <table border="1"> <thead> <tr> <th colspan="4">Message handling</th> </tr> <tr> <th>Message Class</th> <th>Message</th> <th>Message Text</th> <th>Class/Interface</th> </tr> </thead> <tbody> <tr> <td>00</td> <td>344</td> <td>No batch input data for screen &1 &2</td> <td>/TISA/CL_FW_PROC_MSG_BDC</td> </tr> <tr> <td>00</td> <td>347</td> <td>Field &1&2 is not an input field</td> <td>/TISA/CL_FW_PROC_MSG_BDC</td> </tr> <tr> <td>00</td> <td>349</td> <td>Field &1&2 does not exist in the screen</td> <td>/TISA/CL_FW_PROC_MSG_BDC</td> </tr> </tbody> </table>	Message handling				Message Class	Message	Message Text	Class/Interface	00	344	No batch input data for screen &1 &2	/TISA/CL_FW_PROC_MSG_BDC	00	347	Field &1&2 is not an input field	/TISA/CL_FW_PROC_MSG_BDC	00	349	Field &1&2 does not exist in the screen	/TISA/CL_FW_PROC_MSG_BDC
Message handling																					
Message Class	Message	Message Text	Class/Interface																		
00	344	No batch input data for screen &1 &2	/TISA/CL_FW_PROC_MSG_BDC																		
00	347	Field &1&2 is not an input field	/TISA/CL_FW_PROC_MSG_BDC																		
00	349	Field &1&2 does not exist in the screen	/TISA/CL_FW_PROC_MSG_BDC																		

/TISA/AP_CUST

Setting	Details
EDI field mapping	Maps IDoc segments to eFLOW Control fields.
Completions	<p>Goods receipt completion 1 to 1</p> <p>Goods receipt quantity matching completion</p> <p>PO item completion 1 to 1</p>

Setting	Details
	PO item completion 1 to n PO item unit price completion Tax code completion from the PO Tax jurisdiction completion from the PO Vendor completion from the PO
Validations	Check document balance Check company code of invoice against PO Check unplanned delivery cost Check if down payment exists for vendor account Check for duplicate invoice Check goods receipt Check GR-IV reference Check if GR date is later than invoice date Check if document can be MM type Check if purchase order exists in system Check price Check quantity Check vendor against vendor named in PO
Business issues	Validate bank data Duplicate document Missing goods receipt Price deviation Quantity deviation Document is too old Blocked vendor
Automatic posting	Activated for MM documents.
Waiting reasons	GR Waiting for delivery PI Pending investigation

Setting	Details
Reasons for declining	DP Duplicate document IL Illegible invoice image WC Wrong receiving company
Quick selections	Discounts coming due Available discounts Oldest 50 documents
Data visualizations	Documents by transaction Average document processing Documents by state (document detail view) Documents by state (document list view) Vendor / company code volume Documents in/out timeline Documents by transaction and vendor

/TISA/WF_CUST

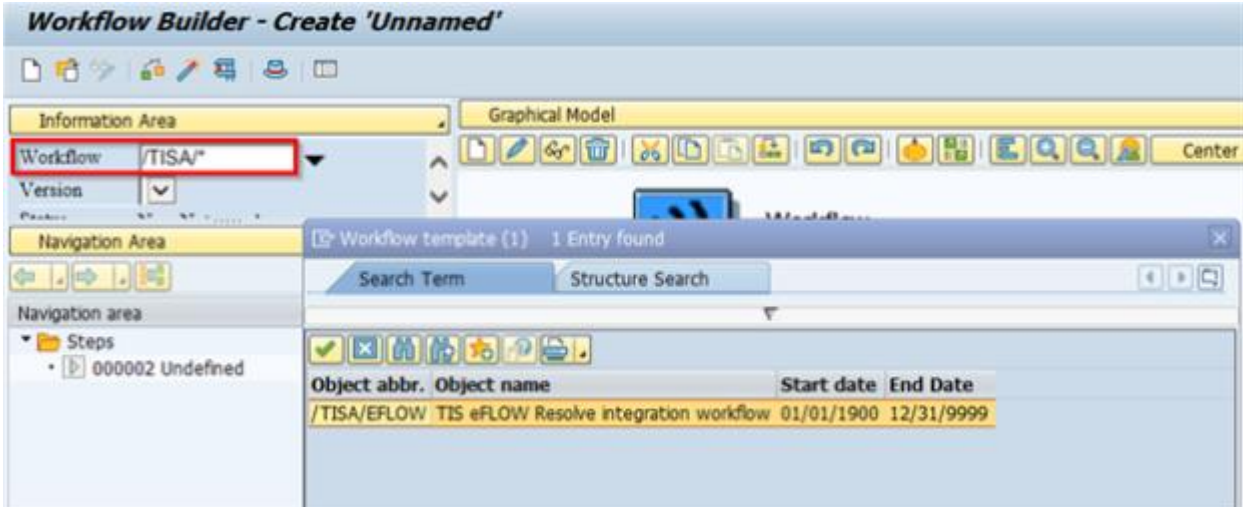
Setting	Details
Workflows	Ad hoc workflow Non-PO coding and approval workflow Missing goods receipt workflow Missing or wrong PO workflow Price mismatch workflow Quantity mismatch workflow Vendor maintenance workflow
Workflow email templates	eFLOW Resolve notification eFLOW Resolve reminder eFLOW Resolve escalation eFLOW Resolve inquiry sent eFLOW Resolve inquiry answered


Setting	Details
	All email templates include a link to the SAP GUI, and the invoice image is attached to all email notifications.
Workflow audit trail	A standard document type and stylesheet are defined for the workflow audit trail.
Web Application layout	Defines which fields are displayed in the eFLOW Resolve Web application and their position on the screen.

Activate SAP workflow integration

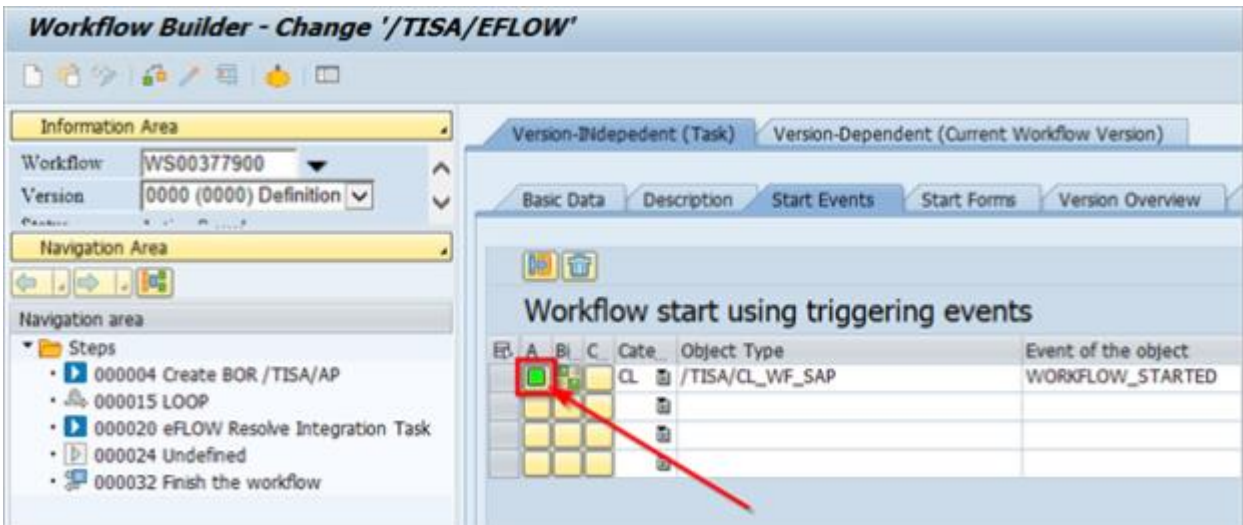
This section explains how to activate the integration of the SAP workflow in eFLOW Resolve. This enables eFLOW Resolve users to access their eFLOW Resolve workflow tasks from the SAP Business Workplace (SBWP).

1. In transaction SWDD, search for and select the workflow /TISA/EFLOW.

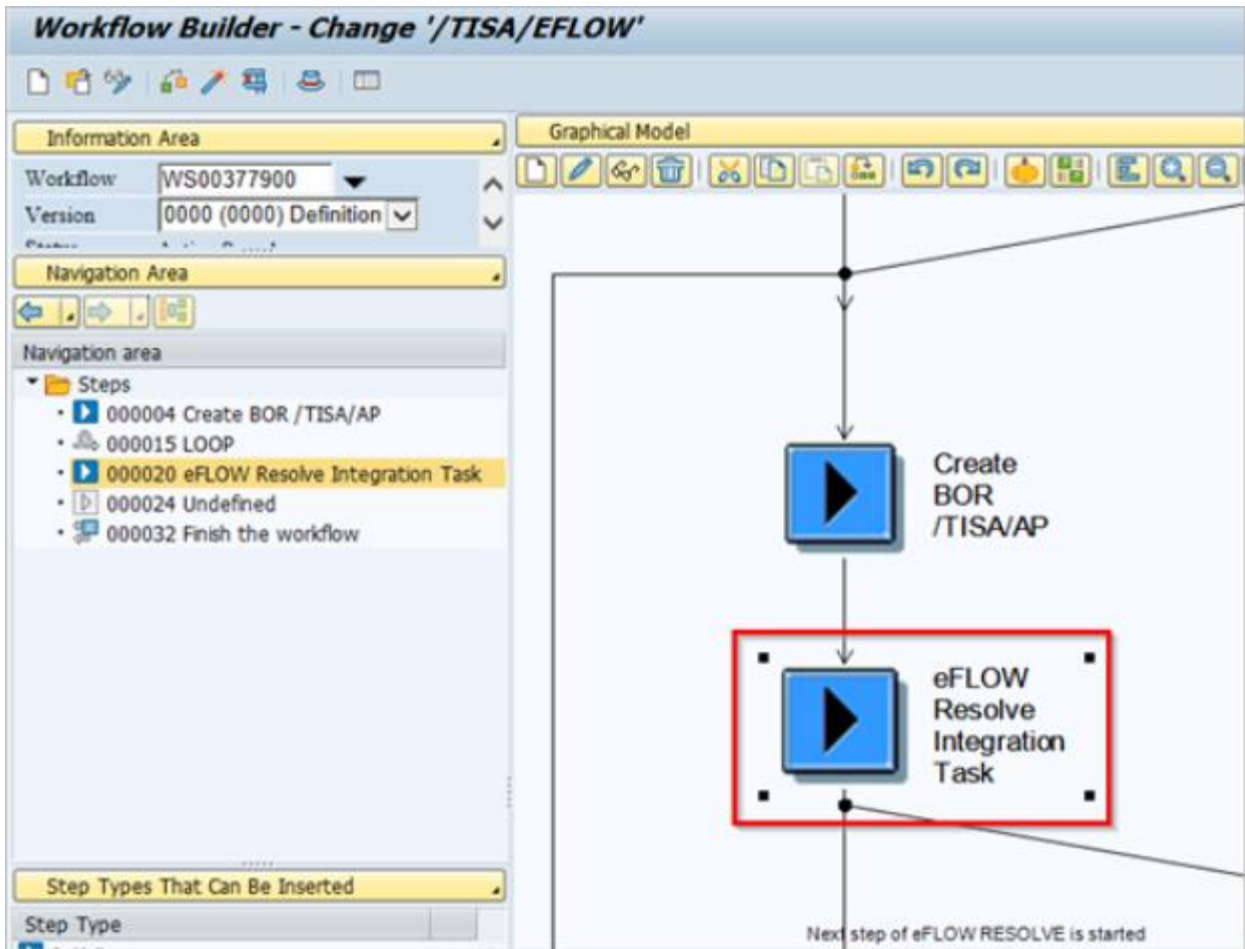


2. Click the **Basic data** button .
3. In the **Start Events** tab, click the **Activate binding** button.

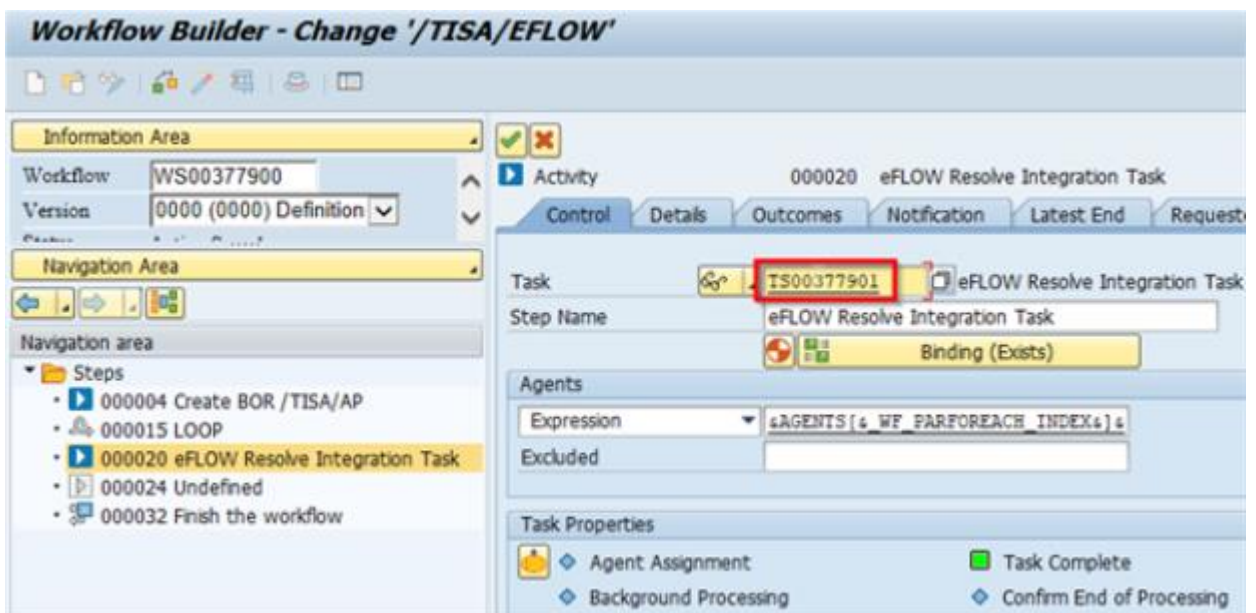
Make sure that the button is displayed in green, indicating that the binding is active.



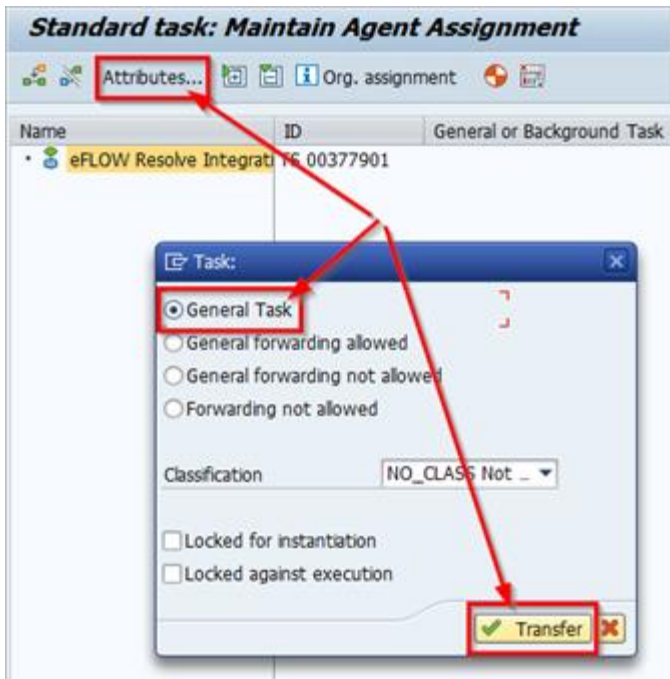
4. Go back to the workflow overview.
5. Double-click the task **eFLOW Resolve Integration Task**.



6. Double-click the task number.



7. On the **Additional data** menu, select **Agent assignment > Maintain**.
8. Click the **Attributes** button.
9. In the **Task** dialog box, select **General Task**, then click the **Transfer** button.



Authorizations

eFLOW Control and Resolve are delivered with [authorization objects](#) and template [roles](#) to define user access to the application.

The eFLOW Control and Resolve authorization concept differentiates the following types of access:

- Document access: Determines which documents users may access based on the attributes **Framework document type**, **Company code**, and **AP document type**. Enables you, for example, to restrict document access to documents belonging to a specific company code.
- User interface access: Determines which actions users may perform on documents. Enables you, for example, to restrict certain actions, such as **Park** or **Supervisor post**, to specific users.

Authorization objects

eFLOW Control and Resolve provide the following authorization objects.

Authorization object /TISA/AP (Document access)

You must grant access rights to eFLOW documents for all users who use the /TISA/EFLOW_CONTROL transaction. You can restrict access to documents belonging to a specific company code, Framework document type, or AP document type.

The /TISA/AP authorization object enables authorization checks on document attributes. It consists of the following fields.

Authorization field	Long text
/TISA/APTY	AP document type
/TISA/TYPE	Framework document type
ACTVT	Activity
BUKRS	Company code

Authorization field /TISA/APTY

Authorization for the different AP document types: PO invoices, non-PO invoices, down payment requests, and accrual postings.

Authorization field /TISA/TYPE

Authorization for eFLOW Control document types. eFLOW Control document types can be defined in transaction /TISA/ADMIN under **Basic settings > Define eFLOW document types**.

Authorization field ACTVT

Authorization for actions. The following values are possible:

- 01 Create or generate
- 02 Change
- 03 Display
- 08 Display change documents
- 10 Post
- 38 Perform
- 39 Check
- 44 Flag
- 48 Simulate
- 59 Distribute (not used)
- 78 Assign
- 81 Schedule
- 85 Reverse
- 87 Return
- 89 Force posting
- 96 Reject
- 98 Mark for release
- A9 Send
- B9 Post Parked Document
- G5 Park
- UL Upload

Authorization field BUKRS

Authorization for company codes of eFLOW documents.

Authorization object /TISA/CMD (User interface access)

The /TISA/CMD authorization object enables authorization checks on actions in the /TISA/EFLOW_CONTROL and /TISA/EFLOW_RESOLVE transactions.

With the authorization object /TISA/CMD, you can restrict access to specific actions. For example, you may want to allow access to actions such as **Park**, **Supervisor post**, or **Process online** for specific users only. In this case, you must disable these actions for all other users.

Tip You can use the Role generator to quickly and easily determine required values for the /TISA/CMD authorization object. See the Role generator section in the eFLOW Control and Resolve Configuration Guide for more information.

The /TISA/CMD authorization object consists of the following fields.

Authorization field	Long text
/TISA/CMD	System command
ACTVT	Activity

Authorization field /TISA/CMD

The /TISA/CMD field can have the following values.

eFLOW Control	
<p>Document menu</p> <p>IMPORT Import from SAP AUTOACTION eFLOW me CHECK Check document SAP_SYNC Synchronize document POST Post document PARK Park document PROCESS Process document SIMU Simulate document SUPER_POST Supervisor post SAP_ASGN Assign SAP document REVERSE Reverse document HOLD Waiting OWNER Change owner CLASSIFY Classify document REJECT Reject document</p>	<p>Edit menu</p> <p>TOGGLE Display/change mode TAG Tag document COMPL_ASGN Apply Completion Result SEND_MSG Send message IMAGE Show image STATI Show statistics PROCLOG Process log CHGHISTORY Change history EFLOW_EXTR eFLOW Extract Express learning eFLOW_MANU eFLOW Extract Manual learning</p> <p>Goto menu</p> <p>USER_SET User settings DISP_VEN Show vendor DISP_PO Show purchase order DISP_FI Show FI invoice DISP_MM Show MM invoice ABOUT About</p> <p>Workflow menu</p> <p>WF_AUDIT Workflow audit trail WF_START Start workflow WF_STOP Call back workflow</p>

eFLOW Resolve	
<p>Workflow menu</p> <p>WF_AUDIT Workflow audit trail WF_APPROVE Approve workflow WF_REJECT Reject workflow WF_FORWARD Forward WF_INQUIRY Inquiry</p> <p>Edit menu</p> <p>TOGGLE Display/change mode TAG Tag document COMPL_ASGN Apply Completion Result SEND_MSG Send message IMAGE Show image STATI Show statistics PROCLOG Process log CHGHISTORY Change history EFLOW_EXTR eFLOW Extract Express learning EFLOW_MANU eFLOW Extract Manual learning</p>	<p>Goto menu</p> <p>USER_SET User settings DISP_VEN Show vendor DISP_PO Show purchase order DISP_FI Show FI invoice DISP_MM Show MM invoice ABOUT About</p>

Authorization field ACTVT

The ACTVT field contains the permitted actions. Currently, it can have the value 16 (Execute).

Authorization object /TISA/REP (eFLOW Reporting access)

You must grant access rights to eFLOW Reporting for all users who use the /TISA/EFLOW_REPORT transaction. You can restrict access to specific reports.

The /TISA/REP authorization object enables authorization checks on eFLOW Control reports. It consists of the following field.

Authorization field	Long text
/TISA/OTYP	Object type name

Authorization field OTYP

The /TISA/OTYP field contains the report classes. To specify which reports can be accessed, add the appropriate report classes to the **Object Type Name** field in the role.

The /TISA/OTYP field can have the following values.

Report class	Report name
/TISA/CL_AP_REP_ATO	AP Report: Automation statistics

Report class	Report name
/TISA/CL_AP_REP_ATO_COMP	AP Report: Automation statistics by company code
/TISA/CL_AP_REP_ATO_VEND	AP Report: Automation statistics by vendor
/TISA/CL_AP_REP_ER_ALL	AP Report: Business issue resolution time
/TISA/CL_AP_REP_ER_COMP	AP Report: Business issue resolution time by company code
/TISA/CL_AP_REP_ER_VEND	AP Report: Business issue resolution time by vendor
/TISA/CL_AP_REP_FM	AP Report: MM/FI/DR split template
/TISA/CL_AP_REP_FM_COMP	AP Report: MM/FI/DR split by company code
/TISA/CL_AP_REP_FM_VEND	AP Report: MM/FI/DR split by vendor
/TISA/CL_AP_REP_IO_ALL	AP Report: Documents in/out
/TISA/CL_AP_REP_IO_COMP	AP Report: Documents in/out by company code
/TISA/CL_AP_REP_IO_VEND	AP Report: Documents in/out by vendor
/TISA/CL_AP_REP_PT	AP Report: Processing time Template
/TISA/CL_AP_REP_PT_COMP	AP Report: Processing time by company code
/TISA/CL_AP_REP_PT_OWNR	AP Report: Processing time by owner
/TISA/CL_AP_REP_PT_VEND	AP Report: Processing time by vendor
/TISA/CL_AP_REP_STAT_CHNG	AP Report: Document state history

Report class	Report name
/TISA/CL_AP_REP_VOL	AP Report: Document volume
/TISA/CL_AP_REP_VOL_COMP	AP Report: Document volume by company code
/TISA/CL_AP_REP_VOL_OWNR	AP Report: Document volume by owner
/TISA/CL_AP_REP_VOL_VEND	AP Report: Document volume by vendor
/TISA/CL_AP_REP_WF_PT_ALL	WF Report: Workflow processing time
/TISA/CL_AP_REP_WF_PT_COMP	WF Report: Workflow processing time by company code
/TISA/CL_AP_REP_WF_PT_VEND	WF Report: Workflow processing time by vendor
/TISA/CL_AP_REP_WF_ST_ALL	WF Report: Workflow statistics
/TISA/CL_AP_REP_WF_ST_COMP	WF Report: Workflow statistics by company code
/TISA/CL_AP_REP_WF_ST_VEND	WF Report: Workflow statistics by vendor

Connection between functionality and authorization object

Menu functionality	Auth. object /TISA/AP Field ACTVT	Auth. object /TISA/CMD Field /TISA/CMD
Select documents	03 = Display	
Document > Create from SAP	01 = Create	SAP_NEW
Document > Post > eFLOW me		AUTOACTION
Document > Post > Check	39 = Check	CHECK

Menu functionality	Auth. object /TISA/AP Field ACTVT	Auth. object /TISA/CMD Field /TISA/CMD
Document > Post > Post	10 = Post	POST
Document > Post > Post (on parked document)	B9 = Post parked document	POST
Document > Post > Park	G5 = Park	PARK
Document > Post > Process online	38 = Perform	PROCESS
Document > Post > Simulate	48 = Simulate	SIMU
Document > Post > Supervisor post	89 = Force posting (requires 39 = Check)	SUPER_POST
Document > Assign SAP document	02 = Change	SAP_ASGN
Document > Reverse	85 = Reverse	REVERSE
Document > Change owner	78 = Assign	OWNER
Document > Set to wait	81 = Schedule	HOLD
Document > Reject	96 = Reject	REJECT
Document > Classify	02 = Change	CLASSIFY
Edit > Display/change mode	02 = Change	TOGGLE
Edit > Add/remove tag	44 = Flag	AG
Edit > Apply completion	02 = Change	COMPL_ASGN

Menu functionality	Auth. object /TISA/AP Field ACTVT	Auth. object /TISA/CMD Field /TISA/CMD
Edit > Send message	A9 = Send	SEND_MSG
Edit > Show image	D3 = Detailed Display	IMAGE
Edit > Show statistics	-	STATI
Edit > Process log	-	PROCLOG
Edit > Change history	08 = Display change documents	CHGHISTORY
Edit > eFLOW Extract > Express learning	-	EFLOW_EXPR
Edit > eFLOW Extract > Manual learning	-	EFLOW_MANU
Goto > User settings	-	USER_SET
Goto > Show Vendor	-	DISP_VEN
Goto > Show purchase order	-	DISP_PO
Goto > Show FI invoice	-	DISP_FI
Goto > Show MM invoice	-	DISP_MM
Goto > About	-	ABOUT
Workflow > Audit trail	-	WF_AUDIT
Workflow > Start workflow	98 = Mark for release	WF_START
Workflow > Call-back workflow	87 = Return	WF_STOP

Roles

Template roles are provided for each eFLOW Control and Resolve application component.

All roles are SAP single roles and are delivered as .SAP files, for example, `_TISA_eFLOW_CONTROL_AP.SAP`. The file `_TISA_EFLOW_MASS_DOWNLOAD.SAP` file contains all roles, enabling you to upload all roles at the same time when you first install eFLOW Control and Resolve.

To upload the *.SAP text files to your SAP system, in transaction PFCG, select the menu item **Role > Upload**.

Note Roles starting with `/TISA/*` should not be modified. Additional authorizations should be maintained in separate Y* or Z* roles.

eFLOW Administration user

eFLOW Administration (`/n/tisa/admin`) is the central point of entry for configuring eFLOW Control and Resolve.

The `/TISA/EFLOW_ADMIN` role can be assigned to administrator users who configure eFLOW Control and Resolve.

Authorization object S_TCODE

Authorization field	Value (From/To)	
TCD	/TISA/EFLOW_ADMIN	

Authorization object S_TABU_DIS

All customizing tables in eFLOW Control are assigned to the authorization group `/TIS`.

Authorization field	Value (From/To)	
ACTVT	02=Change 03=Display	
DICBERCLS	/TIS	

eFLOW Administration II (application level) user

eFLOW Administration II (`/n/tisa/admin2`) allows authorized users to perform administrative configuration tasks, such as defining default account assignments or managing user substitutes. See the *eFLOW Control and Resolve Administration Guide* for more information.

The `/TISA/EFLOW_ADMIN2` role can be assigned to administrator users who perform such tasks.

Authorization object S_TCODE

Authorization field	Value (From/To)	
TCD	/TISA/EFLOW_ADMIN2	

Authorization object S_TABU_DIS

All customizing tables in eFLOW Control are assigned to the authorization group /TIS.

Authorization field	Value (From/To)	
ACTVT	02=Change 03=Display	
DICBERCLS	/TIS	

eFLOW Control normal user

eFLOW Control (**/tisa/eflow_control**) is the Accounts Payable component of eFLOW.

The /TISA/EFLOW_CONTROL_AP role can be assigned to normal users of eFLOW Control. This role excludes the **Supervisor post** function.

Authorization object /TISA/AP

Authorization field	Value (From/To)	
/TISA/APTY	All values	
/TISA/TYPE	*	

Authorization field	Value (From/To)
ACTVT	16=Execute

Authorization object S_TCODE

Authorization field	Value (From/To)
TCD	/TISA/EFLOW_CONTROL

eFLOW Control normal user Display only

The role /TISA/EFLOW_CONTROL_AP_DISPLAY can be assigned to normal users of eFLOW Control who should only be able to view documents, without the possibility to edit them.

Authorization object /TISA/AP

Authorization field	Value (From/To)
/TISA/APTY	All values
/TISA/TYPE	*
ACTVT	01=Create or generate 02=Change 03=Display 08=Display change documents 10=Post 38=Perform 39=Check 44=Flag 48=Simulate 59=Distribute 78=Assign 81=Schedule 85=Reverse 87=Return 89=Force Posting 96=Reject A9=Send B9=Post Parked Document G5=Park UL=Upload

Authorization field	Value (From/To)	
BUKRS	*	

Authorization object /TISA/CMD

Authorization field	Value (From/To)	
/TISA/CMD	0 AUTOACTIOO CHECL CLASSIFZ COMPL_ASGO EFLOW_EXPS FLOW_MANV HOLE OWNES PARL POSU PROCEST REJECU REVERSF SAP_ASGO SAP_NEX SEND_MSH SIMV SUPER_POSU TAH TOGGLF WF_STARU WF_STOQ	AUTOACTIOM CHECJ CLASSIFX COMPL_ASGM EFLOW_EXPQ EFLOW_MANT HOLC OWNEQ PARJ POSS PROCESR REJECS REVERSD SAP_ASGM SAP_NEV SEND_MSF SIMT SUPER_POSS TAF TOGGLD WF_STARS WF_STOO ////////////////////////////////////// ZZZZZZ
ACTVT	16=Execute	

Authorization object S_TCODE

Authorization field	Value (From/To)	
TCD	/TISA/EFLOW_CONTROL	

eFLOW Control Accrual Report user

The role /TISA/EFLOW_CONTROL_AP_ACCRUAL can be assigned to users of eFLOW Control who should be allowed to run the Accrual Report and create accrual posting documents.

Authorization object S_TCODE

Authorization field	Value (From/To)	
TCD	/TISA/AP_ACCRUAL	

eFLOW Control super user

The role /TISA/EFLOW_CONTROL_AP_SUPER can be assigned to super users of eFLOW Control. All functions are available to super users.

Authorization object /TISA/AP

Authorization field	Value (From/To)	
/TISA/APTY	All values	
/TISA/TYPE	*	
ACTVT	All activities	
BUKRS	*	

Authorization object /TISA/CMD

Authorization object	Value (From/To)	
/TISA/CMD	*	
ACTVT	16=Execute	

Authorization object S_TCODE

Authorization field	Value (From/To)	
TCD	/TISA/EFLOW_CONTROL	

eFLOW Resolve user

eFLOW Resolve (**/n/tisa/eflow_resolve**) is the workflow component of eFLOW.

The role /TISA/EFLOW_RESOLVE can be assigned to users of eFLOW Resolve.

Authorization object /TISA/AP

Authorization field	Value (From/To)	
/TISA/APTY	All values	
/TISA/TYPE	*	
ACTVT	All activities	
BUKRS	*	

eFLOW Resolve user with SSO

The role /TISA/EFLOW_RESOLVE_SSO can be assigned to SSO (Single-Sign On) users of eFLOW Resolve. This role extends the role /TISA/EFLOW_RESOLVE with additional authorization to identify the user with SSO. This authorization is used to retrieve user data with eFLOW Resolve SSO.

Authorization field	Value (From/To)	
ACTVT	16=Execute	
RFC_NAME	/TISA/RFC_WF_LOGIN	
RFC_TYPE	FUNC=Function Module	

eFLOW Reporting user for all reports

The role /TISA/EFLOW_REPORT can be assigned to users of eFLOW Reporting who are allowed to access all reports.

Authorization object /TISA/OTYP

Authorization field	Value (From/To)	
/TISA/OTYP	*	

Authorization object S_TCODE

Authorization field	Value (From/To)	
TCD	/TISA/EFLOW_REPORT	

eFLOW Reporting user for non user-specific reports

The role /TISA/EFLOW_REPORT_AP_NO_USER can be assigned to users of eFLOW Reporting who are allowed to access all reports that are not user-specific (owner-based reports).

Authorization object /TISA/OTYP

Authorization field	Value (From/To)	
/TISA/OTYP	/TISA/CL_AP_REP_ATO_COMP /TISA/CL_AP_REP_ATO_VEND /TISA/CL_AP_REP_ER_COMP /TISA/CL_AP_REP_ER_VEND /TISA/CL_AP_REP_FM_COMP /TISA/CL_AP_REP_FM_VEND /TISA/CL_AP_REP_IO_ALL /TISA/CL_AP_REP_IO_COMP /TISA/CL_AP_REP_IO_VEND /TISA/CL_AP_REP_PT_COMP /TISA/CL_AP_REP_PT_VEND /TISA/CL_AP_REP_STAT_CHNG /TISA/CL_AP_REP_VOL_COMP /TISA/CL_AP_REP_VOL_VEND /TISA/CL_AP_REP_WF_PT_ALL /TISA/CL_AP_REP_WF_PT_COMP /TISA/CL_AP_REP_WF_PT_VEND /TISA/CL_AP_REP_WF_ST_ALL /TISA/CL_AP_REP_WF_ST_COMP /TISA/CL_AP_REP_WF_ST_VEND	

Authorization object S_TCODE

Authorization field	Value (From/To)	
TCD	/TISA/EFLOW_REPORT	

eFLOW Reporting user for user-specific reports

The role /TISA/EFLOW_REPORT_AP_USER can be assigned to users of eFLOW Reporting who are allowed to access reports that are user-specific (owner-based reports).

Authorization object /TISA/OTYP

Authorization field	Value (From/To)	
/TISA/OTYP	/TISA/CL_AP_REP_PT_OWNR /TISA/CL_AP_REP_VOL_OWNR	

Authorization object S_TCODE

Authorization field	Value (From/To)	
TCD	/TISA/EFLOW_REPORT	

RFC user for external communication

External communication via the RFC protocol is used for:

- Data transfer between eFLOW Extract and eFLOW Control
- Data transfer between eFLOW Resolve and the Web Application

The role /TISA/EFLOW_RFC contains the required authorizations for communication via the RFC protocol between eFLOW Extract and eFLOW Control, and between eFLOW Resolve and the Web Application.

Authorization object S_RFC

This authorization is used by eFLOW Extract.

Authorization field	Value (From/To)	
ACTVT	16=Execute	
RFC_NAME	BAPI_TRANSACTION_COMMIT	
RFC_TYPE	FUNC=Function Module	

There is an alternative inactive authorization definition, which uses FUGR instead of FUNC.

Authorization field	Value (From/To)	
ACTVT	16=Execute	

Authorization field	Value (From/To)	
RFC_NAME	BAPT	
RFC_TYPE	FUGR=Function Group	

The following authorization is the standard authorization for the SAP .net Connector (see SAP notes 460089 and 1456826), which is used by eFLOW Extract and the eFLOW Web Application.

Authorization field	Value (From/To)	
ACTVT	16=Execute	
RFC_NAME	DDIF_FIELDINFO_GET RFCPING RFC_FUNCTION_SEARCH RFC_GET_FUNCTION_INTERFACE RFC_METADATA_GET SYSTEM_RESET_RFC_SERVER	
RFC_TYPE	FUNC=Function Module	

There is an alternative inactive authorization definition, which uses FUGR instead of FUNC.

Authorization field	Value (From/To)	
ACTVT	16=Execute	
RFC_NAME	RFC1 SDIFRUNTIME SYST SYSU	
RFC_TYPE	FUNC=Function Group	

The following authorization is used by eFLOW Extract to retrieve data.

Authorization field	Value (From/To)	
ACTVT	16=Execute	
RFC_NAME	RFC_READ_TABLE	
RFC_TYPE	FUNC=Function Module	

There is an alternative inactive authorization definition, which uses FUGR instead of FUNC.

Authorization field	Value (From/To)	
ACTVT	16=Execute	
RFC_NAME	SDTX	
RFC_TYPE	FUGR=Function group	

The following authorization is used by eFLOW Extract to send data to eFLOW Control.

Authorization field	Value (From/To)	
ACTVT	16=Execute	
RFC_NAME	/TISA/RFC_FW_EXTRACT_UPDATE /TISA/RFC_OCR_CREATE	
RFC_TYPE	FUNC=Function Module	

There is an alternative inactive authorization definition, which uses FUGR instead of FUNC.

Authorization field	Value (From/To)	
ACTVT	16=Execute	

Authorization field	Value (From/To)	
RFC_NAME	/TISA/FW_IF_RFC	
RFC_TYPE	FUGR=Function group	

The following authorization is used by the eFLOW Web Application to communicate with eFLOW Resolve.

Authorization	Value (From/To)	
ACTVT	16=Execute	
RFC_NAME	/TISA/RFC_WF_ACTION /TISA/RFC_WF_DOC_DEQUEUE /TISA/RFC_WF_DOC_DETAILS /TISA/RFC_WF_DOC_HISTORY /TISA/RFC_WF_DOC_LIST /TISA/RFC_WF_IMG_DETAILS /TISA/RFC_WF_LOGIN	
RFC_TYPE	FUNC=Function Module	

There is an alternative inactive authorization definition, which uses FUGR instead of FUNC.

Authorization field	Value (From/To)	
ACTVT	16=Execute	
RFC_NAME	/TISA/WF_RFC	
RFC_TYPE	FUGR=Function group	

Authorization object S_TABU_NAM

The following tables are read with RFC_READ_TABLE by eFLOW Extract. Tables /TISA/TAP_EXTR1, /TISA/TAP_EXTR2 and /TISA/TAP_EXTR3 are filled by the report /TISA/AP_EXTRACT_PO_UPDATE.

Authorization field	Value (From/To)
ACTVT	03=Display
TABLE	BNKA LFA1 LFB1 LFBK TIBAN /TISA/TAP_EXTR3 /TISA/TAP_EXTR1 /TISA/TAP_EXTR2

eFLOW email approval user

The role /TISA/EFLOW_EMAIL_APPROVAL is required if you implement email approval, which enables users to approve documents directly from the email that is sent to them when they are assigned to a workflow task. See *Email approval* in the *eFLOW Control and Resolve Configuration Guide* for more information.

Email communication takes place via the Sapconnect user, which is defined in transaction SICF (node **Sapconnect**, tab **Logon data**). This SAPconnect user requires the following authorizations, which are contained in the /TISA/EFLOW_EMAIL_APPROVAL role.

By default, authorization is granted for all user groups (*), but you can limit it to specific user groups.

Authorization field	Value (From/To)
ACTVT	03=Display
S_USER_GRP	*

Additional SAP authorizations

This section describes additional changes to standard SAP authorization objects and roles that are required by eFLOW Control and Resolve.

Additional SAP authorizations to existing roles

eFLOW Control requires some extended authorizations to existing SAP authorization objects.

Authorization object S_TABU_DIS

All customizing tables in eFLOW Control are assigned to the authorization group /TIS.

Authorization field	Value (From/To)
ACTVT	02=Change 03=Display
DICBERCLS	/TIS

Authorization object S_WFAR_OBJ

eFLOW Control creates additional ArchiveLink entries to BKPF and BUS2081.

Authorization field	Value (From/To)
ACTVT	01=Create or generate 02=Change 03=Display 04=Print, edit messages 06=Delete 70=Administer
OAARCHIV	*
OAARCHIV	/TISA/*
OAOBJEKTE	*

Additional SAP authorizations from existing roles

The following authorization objects should already be assigned with existing SAP roles to eFLOW Control/eFLOW Resolve users. Most of the objects require additional limitations for company code, plant, cost center, vendor, and so on, which cannot be delivered with a template role.

Authorization field	Long text
CPE_SETTIN	Commodity Pricing Engine: General Settings
S_TCODE	Transaction Code Check at Transaction Start

Authorization field	Long text
S_GUI	Authorization for GUI activities
S_TABU_DIS	Table Maintenance (via standard tools such as SM30)
S_USER_GRP	User Master Maintenance: User Groups
S_ALV_LAYO	ALV Standard Layout
S_WFAR_OBJ	ArchiveLink: Authorizations for access to documents
K_CCA	CO-CCA: Gen. Authorization Object for Cost Center Accounting
K_CSXS	CO-CCA: Cost Center Master
K_CSXS_SET	CO-CCA: Cost Center Groups
K_PCA	EC-PCA: Responsibility Area, Profit Center
K_PCAR_REP	EC-PCA: Summary and Line Item Reports
K_PCAS_PRC	EC-PCA: Profit Centers
F_BKPF_BUK	Accounting Document: Authorization for Company Codes
F_BKPF_GSB	Accounting Document: Authorization for Business Areas
F_BKPF_KOA	Accounting Document: Authorization for Account Types
F_LFA1_APP	Vendor: Application Authorization
F_LFA1_BUK	Vendor: Authorization for Company Codes

Authorization field	Long text
F_LFA1_GEN	Vendor: Central Data
F_LFA1_GRP	Vendor: Account Group Authorization
F_SKA1_BUK	G/L Account: Authorization for Company Codes
F_SKA1_KTP	G/L Account: Authorization for Charts of Accounts
M_BEST_BSA	Document Type in Purchase Order
M_BEST_EKG	Purchasing Group in Purchase Order
M_BEST_EKO	Purchasing Organization in Purchase Order
M_BEST_WRK	Plant in Purchase Order

Known issues

There are known issues with missing authorizations.

Short dump No RFC authorization

The SAP .net Connector requires additional rights, as described in SAP note 1456826 *Reduction in roundtrips with SAP Connectors*.

The existing template from SAP note 460089 *Minimum authorization profile for external RFC programs* must be extended.

The /TISA/EFLOW_RFC role has already been updated with these extensions.

Authorization object S_RFC

Authorization field	Value (From/To)
ACTVT	16=Execute
RFC_NAME	RFC_FUNCTION_SEARCH RFC_METADATA_GET

Authorization field	Value (From/To)	
RFC_TYPE	FUNC=Function Module	

Short dump PERMISSION_FAILURE

Data transfer between eFLOW Extract and eFLOW Control via RFC ends with the short dump PERMISSION_FAILURE.

SAP introduced an additional authorization check for the Remote function call in SAP note 1847811 *Potential information disclosure relating to SMICM*.

This change required an additional authorization with RZL_ADM in the function module ARCHIVELINK_TABLE_CREATE.

The authorization check is removed with the following SAP notes:

- 1928291 *Authorization check in package SICM is too strict*
- 1956896 *Authorization check in FM ICM_GET_INFO2 is too strict*

Please implement SAP notes 1928291 and 1956896 or assign the authorization with RZL_ADM.

Authorization object RZL_ADM

Authorization field	Value (From/To)	
ACTVT	03=Display	